

Datasheet for ABIN6146427
anti-PTK6 antibody (AA 222-451)[Go to Product page](#)

3 Images

Overview

Quantity:	100 µL
Target:	PTK6
Binding Specificity:	AA 222-451
Reactivity:	Human
Host:	Rabbit
Clonality:	Polyclonal
Conjugate:	This PTK6 antibody is un-conjugated
Application:	Western Blotting (WB), Immunofluorescence (IF)

Product Details

Immunogen:	Recombinant fusion protein containing a sequence corresponding to amino acids 222-451 of human PTK6 (NP_005966.1).
Sequence:	SRDNLLHQQM LQSEIQAMKK LRHKHILALY AVVSVGDPVY IITELMAKGS LLELLRDSDE KVLPVSELLD IAWQVAEGMC YLESQNYIHR DLAARNILVG ENTLCKVGDF GLARLIKEDV YLSHDHNIPIY KWTAPEALSR GHYSTKSDVW SFGILLHEMF SRGQVPYPGM SNHEAFLRVD AGYRMPCPLE CPPSVHKLML TCWCRDPEQR PCFKALRERL SSFTSYENPT
Isotype:	IgG
Cross-Reactivity:	Human, Mouse, Rat
Characteristics:	Polyclonal Antibodies

Target Details

Target:	PTK6
Alternative Name:	PTK6 (PTK6 Products)
Background:	<p>The protein encoded by this gene is a cytoplasmic nonreceptor protein kinase which may function as an intracellular signal transducer in epithelial tissues. Overexpression of this gene in mammary epithelial cells leads to sensitization of the cells to epidermal growth factor and results in a partially transformed phenotype. Expression of this gene has been detected at low levels in some breast tumors but not in normal breast tissue. The encoded protein has been shown to undergo autophosphorylation. Alternative splicing results in multiple transcript variants.,PTK6,BRK,Cancer,Signal Transduction,Kinase,Tyrosine kinases,PTK6</p>
Molecular Weight:	14 kDa/51 kDa
Gene ID:	5753
UniProt:	Q13882

Application Details

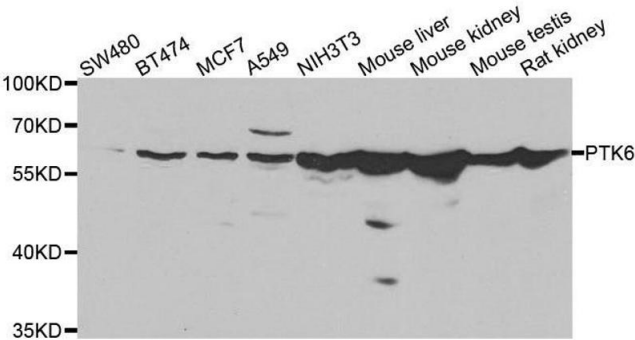
Application Notes:	WB,1:500 - 1:2000,IF,1:50 - 1:200
Comment:	HIGH QUALITY
Restrictions:	For Research Use only

Handling

Format:	Liquid
Buffer:	PBS with 0.02 % sodium azide,50 % glycerol, pH 7.3.
Preservative:	Sodium azide
Precaution of Use:	This product contains Sodium azide: a POISONOUS AND HAZARDOUS SUBSTANCE which should be handled by trained staff only.
Storage:	-20 °C
Storage Comment:	Store at -20°C. Avoid freeze / thaw cycles.

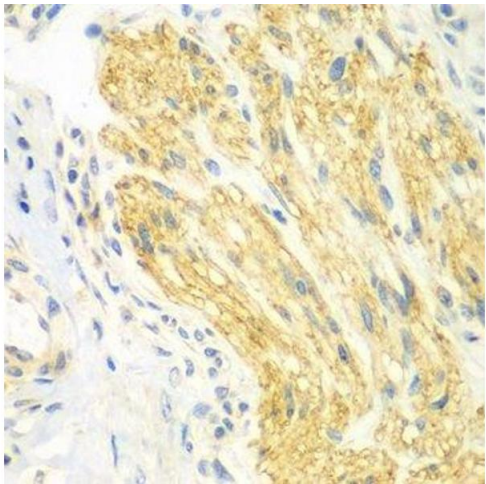
Western Blotting

Image 1. Western blot analysis of extracts of various cell lines, using PTK6 antibody.



Immunohistochemistry (Paraffin-embedded Sections)

Image 2. Immunohistochemistry of paraffin-embedded human gastric cancer using PTK6 antibody.



Immunofluorescence

Image 3. Immunofluorescence analysis of A549 cells using PTK6 antibody.

