

Datasheet for ABIN6146460  
**anti-PTPRE antibody (AA 20-200)**[Go to Product page](#)

## 3 Images

## Overview

Quantity:	100 µL
Target:	PTPRE
Binding Specificity:	AA 20-200
Reactivity:	Human
Host:	Rabbit
Clonality:	Polyclonal
Conjugate:	This PTPRE antibody is un-conjugated
Application:	Western Blotting (WB), Immunohistochemistry (IHC)

## Product Details

Immunogen:	Recombinant fusion protein containing a sequence corresponding to amino acids 20-200 of human PTPRE (NP_006495.1).
Sequence:	LRGNETTADS NETTTTSGPP DPGASQPLLA WLLLPLLLLL LVLLLAAYFF RFRKQRKAVV STSDKKMPNG ILEEQQQRV MLLSRSPSGP KKYFPIPVEH LEEEIRISA DDCKQFREEF NSLPSGHIQG TFELANKEEN REKNRYPNIL PNDHSRVILS QLDGIPCSDY INASYIDGYK E
Isotype:	IgG
Cross-Reactivity:	Human, Mouse, Rat
Characteristics:	Polyclonal Antibodies

## Target Details

Target:	PTPRE
---------	-------

## Target Details

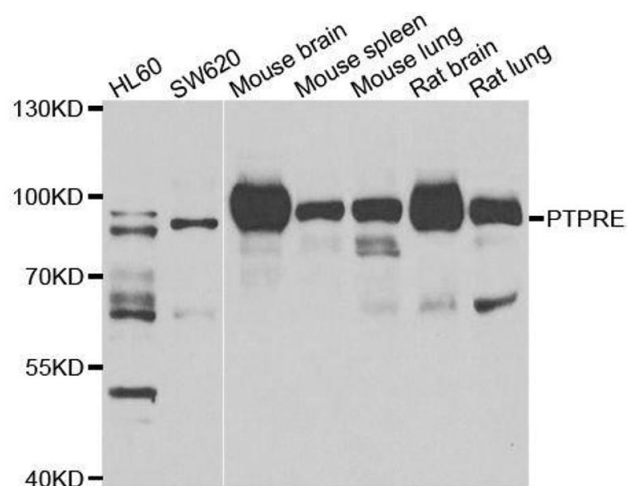
Alternative Name:	PTPRE ( <a href="#">PTPRE Products</a> )
Background:	<p>The protein encoded by this gene is a member of the protein tyrosine phosphatase (PTP) family. PTPs are known to be signaling molecules that regulate a variety of cellular processes including cell growth, differentiation, mitotic cycle, and oncogenic transformation. Several alternatively spliced transcript variants of this gene have been reported, at least two of which encode a receptor-type PTP that possesses a short extracellular domain, a single transmembrane region, and two tandem intracytoplasmic catalytic domains, another one encodes a PTP that contains a distinct hydrophilic N-terminus, and thus represents a nonreceptor-type isoform of this PTP. Studies of the similar gene in mice suggested the regulatory roles of this PTP in RAS related signal transduction pathways, cytokine-induced SATA signaling, as well as the activation of voltage-gated K+ channels.,PTPRE,HPTPE,PTPE,R-PTP-EPSILON,Signal Transduction,Cell Biology &amp; Developmental Biology,Cytoskeleton,Extracellular Matrix,Bone,PTPRE</p>
Molecular Weight:	71 kDa/74 kDa/80 kDa
Gene ID:	5791
UniProt:	<a href="#">P23469</a>

## Application Details

Application Notes:	WB,1:500 - 1:2000,IHC,1:50 - 1:200
Comment:	HIGH QUALITY
Restrictions:	For Research Use only

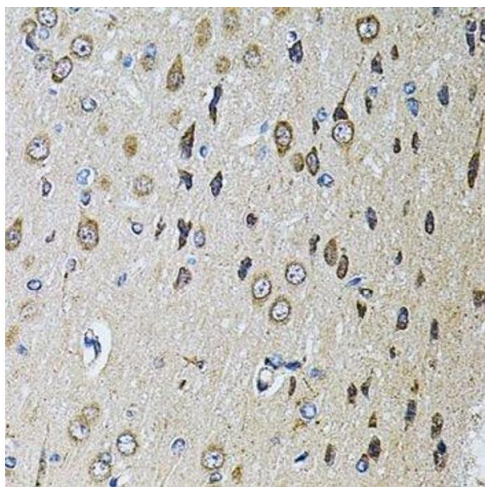
## Handling

Format:	Liquid
Buffer:	PBS with 0.02 % sodium azide,50 % glycerol, pH 7.3.
Preservative:	Sodium azide
Precaution of Use:	This product contains Sodium azide: a POISONOUS AND HAZARDOUS SUBSTANCE which should be handled by trained staff only.
Storage:	-20 °C
Storage Comment:	Store at -20°C. Avoid freeze / thaw cycles.



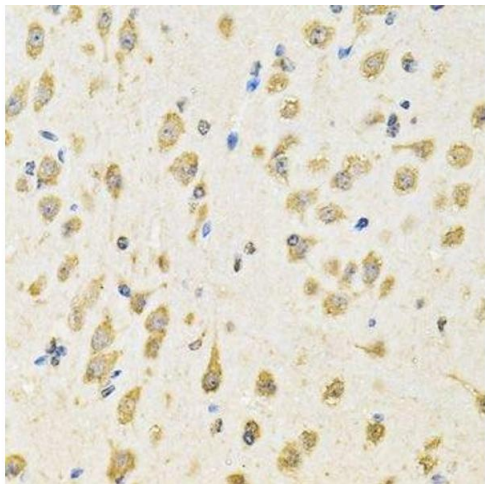
**Western Blotting**

**Image 1.** Western blot analysis of extracts of various cell lines, using PTPRE antibody.



**Immunohistochemistry (Paraffin-embedded Sections)**

**Image 2.** Immunohistochemistry of paraffin-embedded rat brain using PTPRE antibody.



**Immunohistochemistry (Paraffin-embedded Sections)**

**Image 3.** Immunohistochemistry of paraffin-embedded mouse brain using PTPRE antibody.