

Datasheet for ABIN6146462
anti-PTPRF antibody (AA 30-190)



[Go to Product page](#)

1 Image

Overview

Quantity:	100 µL
Target:	PTPRF
Binding Specificity:	AA 30-190
Reactivity:	Human
Host:	Rabbit
Clonality:	Polyclonal
Conjugate:	This PTPRF antibody is un-conjugated
Application:	Western Blotting (WB)

Product Details

Immunogen:	Recombinant fusion protein containing a sequence corresponding to amino acids 30-190 of human PTPRF (NP_569707.2).
Sequence:	DSKPVFIKVP EDQTLGSLGGV ASFVCQATGE PKPRITWMKK GKKVSSQRFE VIEFDDGAGS VLRIQPLRVQ RDEAIYECTA TNSLGEINTS AKLSVLEEEQ LPPGFPSIDM GPQLKVVEKA RTATMLCAAG GNPDPEISWF KDFLPVPAT SNGRIKQLRS G
Isotype:	IgG
Cross-Reactivity:	Human, Mouse
Characteristics:	Polyclonal Antibodies

Target Details

Target:	PTPRF
---------	-------

Target Details

Alternative Name: [PTPRF \(PTPRF Products\)](#)

Background: The protein encoded by this gene is a member of the protein tyrosine phosphatase (PTP) family. PTPs are known to be signaling molecules that regulate a variety of cellular processes including cell growth, differentiation, mitotic cycle, and oncogenic transformation. This PTP possesses an extracellular region, a single transmembrane region, and two tandem intracytoplasmic catalytic domains, and thus represents a receptor-type PTP. The extracellular region contains three Ig-like domains, and nine non-Ig like domains similar to that of neural-cell adhesion molecule. This PTP was shown to function in the regulation of epithelial cell-cell contacts at adherens junctions, as well as in the control of beta-catenin signaling. An increased expression level of this protein was found in the insulin-responsive tissue of obese, insulin-resistant individuals, and may contribute to the pathogenesis of insulin resistance. Two alternatively spliced transcript variants of this gene, which encode distinct proteins, have been reported.,PTPRF,BNAH2,LAR,Cancer,Signal Transduction,Endocrine & Metabolism,Neuroscience,Cell Type Marker,Neuron marker,Synapse marker,PTPRF

Molecular Weight: 211 kDa/212 kDa

Gene ID: 5792

UniProt: [P10586](#)

Pathways: [EGFR Signaling Pathway](#)

Application Details

Application Notes: WB,1:500 - 1:2000

Restrictions: For Research Use only

Handling

Format: Liquid

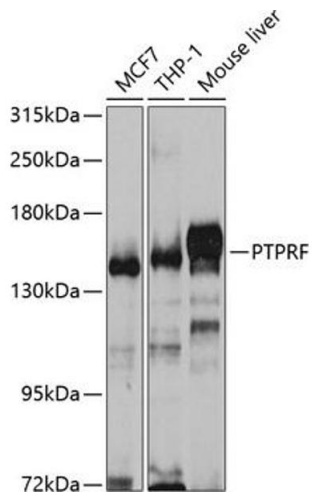
Buffer: PBS with 0.02 % sodium azide,50 % glycerol, pH 7.3.

Preservative: Sodium azide

Precaution of Use: This product contains Sodium azide: a POISONOUS AND HAZARDOUS SUBSTANCE which should be handled by trained staff only.

Storage: -20 °C

Storage Comment: Store at -20°C. Avoid freeze / thaw cycles.



Western Blotting

Image 1. Western blot analysis of extracts of various cell lines, using PTPRF antibody (ABIN6129316, ABIN6146462, ABIN6146463 and ABIN6221096) at 1:1000 dilution. Secondary antibody: HRP Goat Anti-Rabbit IgG (H+L) (ABIN1684268 and ABIN3020597) at 1:10000 dilution. Lysates/proteins: 25 µg per lane. Blocking buffer: 3 % nonfat dry milk in TBST. Detection: ECL Enhanced Kit (RM00021). Exposure time: 30s.