



[Go to Product page](#)

Datasheet for ABIN6146468
anti-PTPRO antibody (AA 30-300)

1 Image

Overview

Quantity:	100 µL
Target:	PTPRO
Binding Specificity:	AA 30-300
Reactivity:	Human
Host:	Rabbit
Clonality:	Polyclonal
Conjugate:	This PTPRO antibody is un-conjugated
Application:	Western Blotting (WB)

Product Details

Immunogen:	Recombinant fusion protein containing a sequence corresponding to amino acids 30-300 of human PTPRO (NP_109592.1).
Sequence:	FHVTVQDDNN IVVSLEASDV ISPASVYVVK ITGESKNYFF EFEFNSTLP PPVIFKASYH GLYYIITLVV VNGNVVTKPS RSITVLTKPL PVTSVSIYDY KPSPETGVLF EIHYPEKYNV FTRVNISYWE GKDFRTMLYK DFFKGKTVFN HWLPGMCYSN ITFQLVSEAT FNKSTLVEYS GVSHEPKQHR TAPYPPQNIS VRIVNLNKNN WEEQSGNFPE ESFMRSQDTI GKEKLFHFTE ETPEIPSGNI SSGWPDFNSS DYETTSQPYW W
Isotype:	IgG
Cross-Reactivity:	Human, Mouse
Characteristics:	Polyclonal Antibodies

Target Details

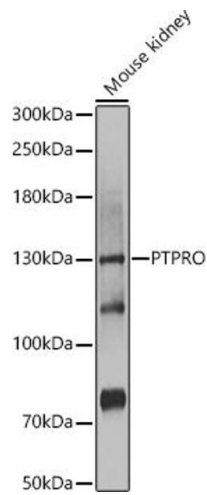
Target:	PTPRO
Alternative Name:	PTPRO (PTPRO Products)
Background:	<p>This gene encodes a member of the R3 subtype family of receptor-type protein tyrosine phosphatases. These proteins are localized to the apical surface of polarized cells and may have tissue-specific functions through activation of Src family kinases. This gene contains two distinct promoters, and alternatively spliced transcript variants encoding multiple isoforms have been observed. The encoded proteins may have multiple isoform-specific and tissue-specific functions, including the regulation of osteoclast production and activity, inhibition of cell proliferation and facilitation of apoptosis. This gene is a candidate tumor suppressor, and decreased expression of this gene has been observed in several types of cancer.,PTPRO,GLEPP1,NPHS6,PTP-OC,PTP-U2,PTPROT,PTPU2,R-PTP-O,Signal Transduction,PTPRO</p>
Molecular Weight:	43 kDa/47 kDa/67 kDa/134 kDa/138 kDa
Gene ID:	5800
UniProt:	Q16827
Pathways:	Cell-Cell Junction Organization

Application Details

Application Notes:	WB,1:500 - 1:2000
Restrictions:	For Research Use only

Handling

Format:	Liquid
Buffer:	PBS with 0.02 % sodium azide,50 % glycerol, pH 7.3.
Preservative:	Sodium azide
Precaution of Use:	This product contains Sodium azide: a POISONOUS AND HAZARDOUS SUBSTANCE which should be handled by trained staff only.
Storage:	-20 °C
Storage Comment:	Store at -20°C. Avoid freeze / thaw cycles.



Western Blotting

Image 1. Western blot analysis of extracts of Mouse kidney, using PTPRO antibody (ABIN6131702, ABIN6146468, ABIN6146469 and ABIN6222709) at 1:1000 dilution. Secondary antibody: HRP Goat Anti-Rabbit IgG (H+L) (ABIN1684268 and ABIN3020597) at 1:10000 dilution. Lysates/proteins: 25 µg per lane. Blocking buffer: 3 % nonfat dry milk in TBST. Detection: ECL Basic Kit (RM00020). Exposure time: 10s.