

Datasheet for ABIN6146522
anti-PYGB antibody (AA 544-843)



[Go to Product page](#)

6 Images

Overview

Quantity:	100 µL
Target:	PYGB (GPBB)
Binding Specificity:	AA 544-843
Reactivity:	Human
Host:	Rabbit
Clonality:	Polyclonal
Conjugate:	This PYGB antibody is un-conjugated
Application:	Western Blotting (WB), Immunoprecipitation (IP), Immunofluorescence (IF)

Product Details

Immunogen:	Recombinant fusion protein containing a sequence corresponding to amino acids 544-843 of human PYGB (NP_002853.2).
Sequence:	LKFSAFLEKE YKVKINPSSM FDVHVKRIHE YKRQLLNCLH VVTLYNRIKR DPAKAFVVRT VMIGGKAAPG YHMAKLIKL VTSIGDVVNH DPVVGDRKLV IFLENYRVSL AEKVIPAADL SQQISTAGTE ASGTGNMKFM LNGALTIGTM DGANVEMAE EAGAENLFIFG LRVEDVEALD RKGYNAREYY DHLPELKQAV DQISSGFFSP KEPDCFKDIV NMLMHDRFK VFADYEAYMQ CQAQVDQLYR NPKEWTKKVI RNIACSGKFS SDRTITEYAR EIWGVPEPSDL QIPPPNIPRD
Isotype:	IgG
Cross-Reactivity:	Human, Mouse, Rat
Characteristics:	Polyclonal Antibodies

Target Details

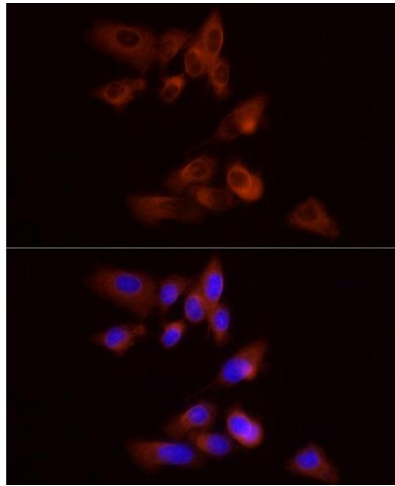
Target:	PYGB (GPBB)
Alternative Name:	PYGB (GPBB Products)
Background:	The protein encoded by this gene is a glycogen phosphorylase found predominantly in the brain. The encoded protein forms homodimers which can associate into homotetramers, the enzymatically active form of glycogen phosphorylase. The activity of this enzyme is positively regulated by AMP and negatively regulated by ATP, ADP, and glucose-6-phosphate. This enzyme catalyzes the rate-determining step in glycogen degradation.,PYGB,GPBB,Signal Transduction,Endocrine & Metabolism,Cardiovascular,Heart,Cardiac metabolism,PYGB
Molecular Weight:	96 kDa
Gene ID:	5834
UniProt:	P11216
Pathways:	Cellular Glucan Metabolic Process

Application Details

Application Notes:	WB,1:500 - 1:2000,IF,1:20 - 1:100,IP,1:50 - 1:100
Comment:	HIGH QUALITY
Restrictions:	For Research Use only

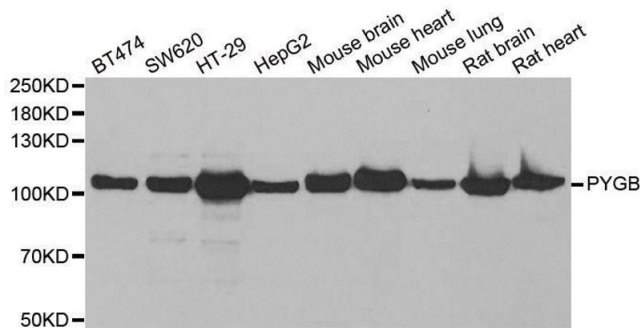
Handling

Format:	Liquid
Buffer:	PBS with 0.02 % sodium azide,50 % glycerol, pH 7.3.
Preservative:	Sodium azide
Precaution of Use:	This product contains Sodium azide: a POISONOUS AND HAZARDOUS SUBSTANCE which should be handled by trained staff only.
Storage:	-20 °C
Storage Comment:	Store at -20°C. Avoid freeze / thaw cycles.



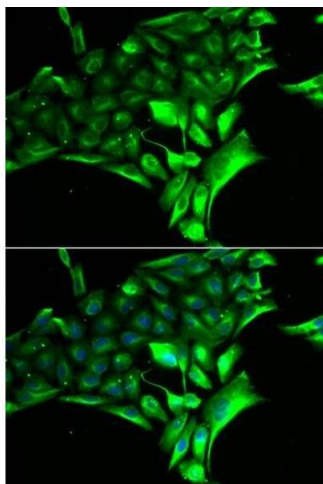
Immunofluorescence

Image 1. Immunofluorescence analysis of PC-3 cells using PYGB Rabbit pAb at dilution of 1:100 (40x lens). Blue: DAPI for nuclear staining.



Western Blotting

Image 2. Western blot analysis of extracts of various cell lines, using PYGB antibody.



Immunofluorescence

Image 3. Immunofluorescence analysis of MCF-7 cells using PYGB antibody.

Please check the [product details page](#) for more images. Overall 6 images are available for ABIN6146522.