



Datasheet for ABIN6146527
anti-PYGM antibody (C-Term)



[Go to Product page](#)

1 Image

Overview

Quantity:	100 µL
Target:	PYGM
Binding Specificity:	C-Term
Reactivity:	Human
Host:	Rabbit
Clonality:	Polyclonal
Application:	Western Blotting (WB)

Product Details

Immunogen:	A synthetic peptide corresponding to a sequence within amino acids 700 to the C-terminus of human PYGM (NP_005600.1).
Sequence:	MAEEAGEENF FIFGMRVEDV DKLDQRGYNA QEYYDRIPEL RQVIEQLSSG FFSPKQPDLF KDIVNMLMH DRFKVFADYE DYIKCQEKVS ALYKNPREWT RMVIRNIATS GKFSDDRTIA QYAREIWGVE PSRQRLPAPD EAI
Isotype:	IgG
Cross-Reactivity:	Human, Mouse, Rat
Characteristics:	Polyclonal Antibodies

Target Details

Target:	PYGM
Alternative Name:	PYGM (PYGM Products)

Target Details

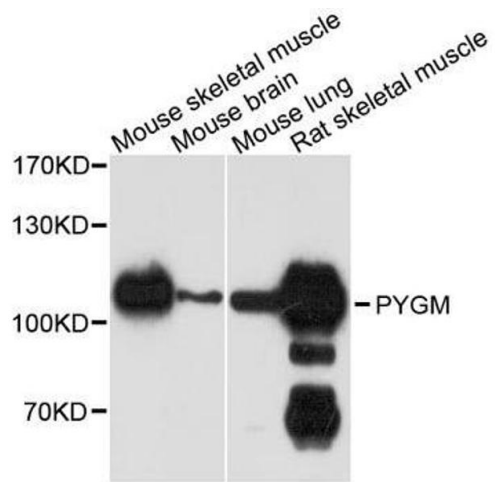
Background:	This gene encodes a muscle enzyme involved in glycogenolysis. Highly similar enzymes encoded by different genes are found in liver and brain. Mutations in this gene are associated with McArdle disease (myophosphorylase deficiency), a glycogen storage disease of muscle. Alternative splicing results in multiple transcript variants.,PYGM,Cancer,Signal Transduction,Endocrine & Metabolism,Carbohydrate metabolism,Cardiovascular,Hypoxia,Heart,Cardiac metabolism,PYGM
Molecular Weight:	87 kDa/97 kDa
Gene ID:	5837
UniProt:	P11217
Pathways:	Cellular Glucan Metabolic Process

Application Details

Application Notes:	WB,1:500 - 1:2000
Comment:	HIGH QUALITY
Restrictions:	For Research Use only

Handling

Format:	Liquid
Buffer:	PBS with 0.02 % sodium azide,50 % glycerol, pH 7.3.
Preservative:	Sodium azide
Precaution of Use:	This product contains Sodium azide: a POISONOUS AND HAZARDOUS SUBSTANCE which should be handled by trained staff only.
Storage:	-20 °C
Storage Comment:	Store at -20°C. Avoid freeze / thaw cycles.



Western Blotting

Image 1. Western blot analysis of extracts of various cell lines, using PYGM antibody.