



[Go to Product page](#)

Datasheet for ABIN6146543

## anti-RAB11FIP1 antibody (AA 330-540)

### 1 Image

#### Overview

Quantity:	100 µL
Target:	RAB11FIP1
Binding Specificity:	AA 330-540
Reactivity:	Human
Host:	Rabbit
Clonality:	Polyclonal
Conjugate:	This RAB11FIP1 antibody is un-conjugated
Application:	Western Blotting (WB)

#### Product Details

Immunogen:	Recombinant fusion protein containing a sequence corresponding to amino acids 330-540 of human RAB11FIP1 (NP_079427.4).
Sequence:	EAKGEIKDSS PSSSPSPKGF RKKHLFSSTE NLAAGSWKEP AEGGGLSSDR QLSESSTKDS LKSM TLP SYR PAPLVSGDLR ENMAPANSEA TKEAKESKPP ESRSSLLSL MTGKKDVAKG SEGENPLTVP GREKEGMLMG VKPGEDASGP AEDLVRRSEK DTAAVVSRQG SSLNLFEDVQ ITEPEAEPES KSEPRPPISS PRAPQTRAVK P
Isotype:	IgG
Cross-Reactivity:	Human
Characteristics:	Polyclonal Antibodies

## Target Details

---

Target:	RAB11FIP1
Alternative Name:	RAB11FIP1 ( <a href="#">RAB11FIP1 Products</a> )
Background:	This gene encodes one of the Rab11-family interacting proteins (Rab11-FIPs), which play a role in the Rab-11 mediated recycling of vesicles. The encoded protein may be involved in endocytic sorting, trafficking of proteins including integrin subunits and epidermal growth factor receptor (EGFR), and transport between the recycling endosome and the trans-Golgi network. Alternative splicing results in multiple transcript variants. A pseudogene is described on the X chromosome.,RAB11FIP1,NOEL1A,RCP,rab11-FIP1,Signal Transduction,G protein signaling,Signal Transduction,RAB11FIP1
Molecular Weight:	15 kDa/47 kDa/65 kDa/70 kDa/137 kDa
Gene ID:	80223
UniProt:	<a href="#">Q6WKZ4</a>

## Application Details

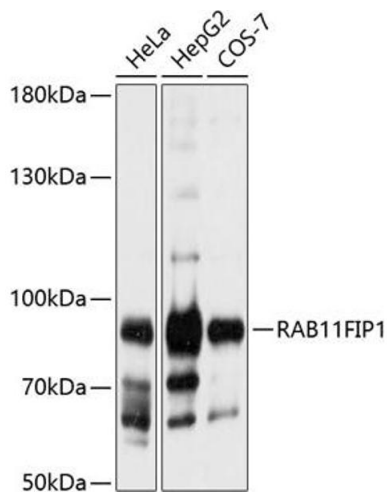
---

Application Notes:	WB,1:200 - 1:2000
Comment:	HIGH QUALITY
Restrictions:	For Research Use only

## Handling

---

Format:	Liquid
Buffer:	PBS with 0.02 % sodium azide,50 % glycerol, pH 7.3.
Preservative:	Sodium azide
Precaution of Use:	This product contains Sodium azide: a POISONOUS AND HAZARDOUS SUBSTANCE which should be handled by trained staff only.
Storage:	-20 °C
Storage Comment:	Store at -20°C. Avoid freeze / thaw cycles.



### Western Blotting

**Image 1.** Western blot analysis of extracts of various cell lines, using RFIPI antibody (ABIN6130589, ABIN6146543, ABIN6146544 and ABIN6224932) at 1:1000 dilution. Secondary antibody: HRP Goat Anti-Rabbit IgG (H+L) (ABIN1684268 and ABIN3020597) at 1:10000 dilution. Lysates/proteins: 25 µg per lane. Blocking buffer: 3 % nonfat dry milk in TBST. Detection: ECL Basic Kit (RM00020). Exposure time: 10s.