

Datasheet for ABIN6146547  
**anti-RAB13 antibody (AA 1-203)**

## 2 Images

[Go to Product page](#)

## Overview

Quantity:	100 µL
Target:	RAB13
Binding Specificity:	AA 1-203
Reactivity:	Human
Host:	Rabbit
Clonality:	Polyclonal
Conjugate:	This RAB13 antibody is un-conjugated
Application:	Western Blotting (WB), Immunofluorescence (IF)

## Product Details

Immunogen:	Recombinant fusion protein containing a sequence corresponding to amino acids 1-203 of human RAB13 (NP_002861.1).
Sequence:	MAKAYDHLFK LLLIGDSGVG KTCLIRFAE DNFNNTYIST IGIDFKIRTV DIEGKKIKLQ VWDTAGQERF KTITTAYYRG AMGIILVYDI TDEKSFENIQ NWMKSIKENA SAGVERLLLG NKCDMEAKRK VQKEQADKLA REHGIRFFET SAKSSMNVD EAFSSLARDIL LKSGGRRSGN GNKPPSTD LK TCDKKNTNKC SLG
Isotype:	IgG
Cross-Reactivity:	Human, Rat
Characteristics:	Polyclonal Antibodies

## Target Details

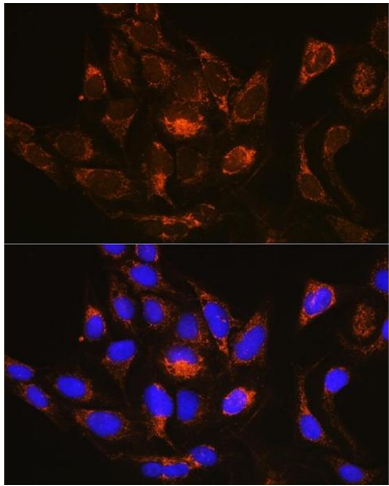
Target:	RAB13
Alternative Name:	RAB13 ( <a href="#">RAB13 Products</a> )
Background:	<p>This gene is a member of the Rab family of small G proteins and plays a role in regulating membrane trafficking between trans-Golgi network (TGN) and recycling endosomes (RE). The encoded protein is involved in the assembly of tight junctions, which are components of the apical junctional complex (AJC) of epithelial cells. The AJC plays a role in forming a barrier between luminal contents and the underlying tissue. Additional functions associated with the protein include endocytic recycling of occludin, regulation of epithelial cell scattering, neuronal regeneration and regulation of neurite outgrowth. Alternately spliced transcript variants have been observed for this gene. A pseudogene associated with this gene is located on chromosome 12.,RAB13,GIG4,Signal Transduction,G protein signaling,Signal Transduction,Cell Biology &amp; Developmental Biology,Cell Adhesion,Tight Junctions,Cytoskeleton,RAB13</p>
Molecular Weight:	22 kDa
Gene ID:	5872
UniProt:	<a href="#">P51153</a>
Pathways:	<a href="#">Cell-Cell Junction Organization</a>

## Application Details

Application Notes:	WB,1:1000 - 1:2000,IF,1:50 - 1:200
Comment:	HIGH QUALITY
Restrictions:	For Research Use only

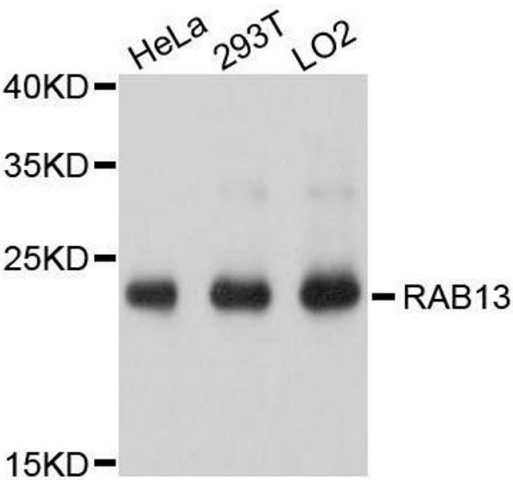
## Handling

Format:	Liquid
Buffer:	PBS with 0.02 % sodium azide,50 % glycerol, pH 7.3.
Preservative:	Sodium azide
Precaution of Use:	This product contains Sodium azide: a POISONOUS AND HAZARDOUS SUBSTANCE which should be handled by trained staff only.
Storage:	-20 °C
Storage Comment:	Store at -20°C. Avoid freeze / thaw cycles.



Immunofluorescence

**Image 1.** Immunofluorescence analysis of U-2 OS cells using R Rabbit pAb (ABIN6128425, ABIN6146547, ABIN6146548 and ABIN6214868) at dilution of 1:100 (40x lens). Blue: DAPI for nuclear staining.



Western Blotting

**Image 2.** Western blot analysis of extracts of various cell lines, using RAB13 antibody.