

Datasheet for ABIN6146553
anti-RAB1B antibody (AA 7-201)



[Go to Product page](#)

2 Images

Overview

Quantity:	100 µL
Target:	RAB1B
Binding Specificity:	AA 7-201
Reactivity:	Human
Host:	Rabbit
Clonality:	Polyclonal
Conjugate:	This RAB1B antibody is un-conjugated
Application:	Western Blotting (WB), Immunofluorescence (IF)

Product Details

Immunogen:	Recombinant fusion protein containing a sequence corresponding to amino acids 7-201 of human RAB1B (NP_112243.1).
Sequence:	YLFKLLIGD SGVGKSCLLL RFADDTYTES YISTIGVDFK IRTIELDGKT IKLQIWDTAG QERFRTITSS YYRGAHGIIV VYDVTDQESY ANVKQWLQEI DRYASENVNK LLVGNKSDLT TKKVVDNTTA KEFADSLGIP FLETSAKNAT NVEQAFMTMA AEIKKRMGPG AASGGERPNI KIDSTPVKPA GGGCC
Isotype:	IgG
Cross-Reactivity:	Human, Mouse, Rat
Characteristics:	Polyclonal Antibodies

Target Details

Target:	RAB1B
---------	-------

Target Details

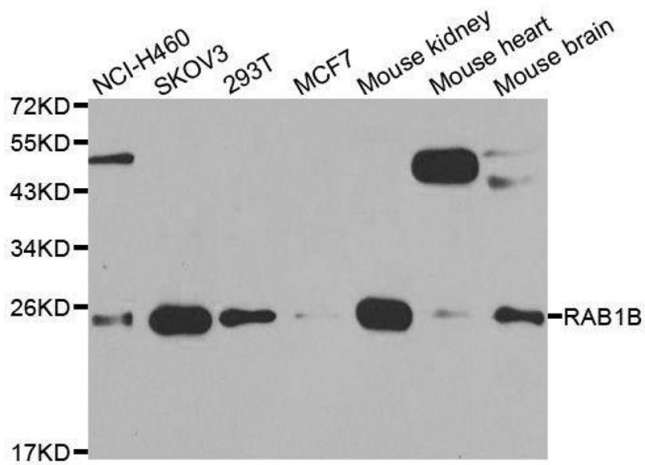
Alternative Name:	RAB1B (RAB1B Products)
Background:	Members of the RAB protein family, such as RAB1B, are low molecular mass monomeric GTPases localized on the cytoplasmic surfaces of distinct membrane-bound organelles. RAB1B functions in the early secretory pathway and is essential for vesicle transport between the endoplasmic reticulum (ER) and Golgi (Chen et al., 1997 [PubMed 9030196], Alvarez et al., 2003 [PubMed 12802079]).[supplied by OMIM, Jan 2009],RAB1B,Signal Transduction,G protein signaling,Signal Transduction,RAB1B
Molecular Weight:	22 kDa
Gene ID:	81876
UniProt:	Q9H0U4

Application Details

Application Notes:	WB,1:500 - 1:2000,IF,1:50 - 1:200
Comment:	HIGH QUALITY
Restrictions:	For Research Use only

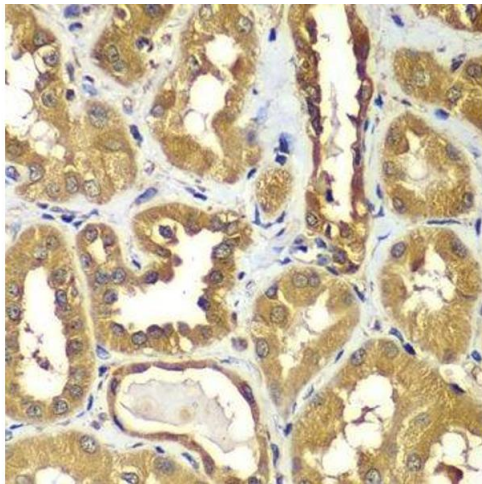
Handling

Format:	Liquid
Buffer:	PBS with 0.02 % sodium azide,50 % glycerol, pH 7.3.
Preservative:	Sodium azide
Precaution of Use:	This product contains Sodium azide: a POISONOUS AND HAZARDOUS SUBSTANCE which should be handled by trained staff only.
Storage:	-20 °C
Storage Comment:	Store at -20°C. Avoid freeze / thaw cycles.



Western Blotting

Image 1. Western blot analysis of extracts of various cell lines, using RAB1B antibody.



Immunohistochemistry (Paraffin-embedded Sections)

Image 2. Immunohistochemistry of paraffin-embedded human kidney using RAB1B antibody.