

Datasheet for ABIN6146567
anti-RAB2A antibody (AA 1-212)



[Go to Product page](#)

1 Image

Overview

Quantity:	100 µL
Target:	RAB2A
Binding Specificity:	AA 1-212
Reactivity:	Human
Host:	Rabbit
Clonality:	Polyclonal
Conjugate:	This RAB2A antibody is un-conjugated
Application:	Western Blotting (WB)

Product Details

Immunogen:	Recombinant fusion protein containing a sequence corresponding to amino acids 1-212 of human RAB2A (NP_002856.1).
Sequence:	MAYAYLFKYI IIGDTGVGKS CLLLQFTDKR FQPVHDLTIG VEFGARMITI DGKQIKLQIW DTAGQESFRS ITRSYRGAA GALLVYDITR RDTFNHLTTW LEDARQHSNS NMVIMLIGNK SDLESRREVK KEEGEAFARE HGLIFMETS A KTASNVEEAF INTAKEIYEK IQEGVFDINN EANGIKIGPQ HAATNATHAG NQGGQQAGGG CC
Isotype:	IgG
Cross-Reactivity:	Human, Mouse, Rat
Characteristics:	Polyclonal Antibodies

Target Details

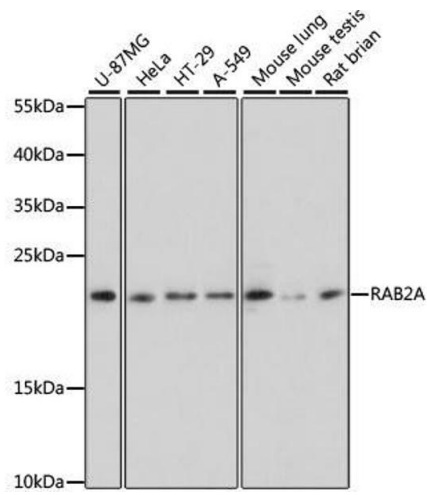
Target:	RAB2A
Alternative Name:	RAB2A (RAB2A Products)
Background:	<p>The protein encoded by this gene belongs to the Rab family, members of which are small molecular weight guanosine triphosphatases (GTPases) that contain highly conserved domains involved in GTP binding and hydrolysis. The Rabs are membrane-bound proteins, involved in vesicular fusion and trafficking. This protein is a resident of pre-Golgi intermediates, and is required for protein transport from the endoplasmic reticulum (ER) to the Golgi complex. Alternatively spliced transcript variants encoding different isoforms have been found for this gene.,RAB2A,LHX,RAB2,Cancer,Signal Transduction,G protein signaling,Signal Transduction,RAB2A</p>
Molecular Weight:	20 kDa/23 kDa
Gene ID:	5862
UniProt:	P61019
Pathways:	SARS-CoV-2 Protein Interactome

Application Details

Application Notes:	WB,1:500 - 1:2000
Comment:	HIGH QUALITY
Restrictions:	For Research Use only

Handling

Format:	Liquid
Buffer:	PBS with 0.02 % sodium azide,50 % glycerol, pH 7.3.
Preservative:	Sodium azide
Precaution of Use:	This product contains Sodium azide: a POISONOUS AND HAZARDOUS SUBSTANCE which should be handled by trained staff only.
Storage:	-20 °C
Storage Comment:	Store at -20°C. Avoid freeze / thaw cycles.



Western Blotting

Image 1. Western blot analysis of extracts of various cell lines, using RAB2A antibody.