

Datasheet for ABIN614668  
**anti-ADAM17 antibody (AA 215-315)**[Go to Product page](#)

## 4 Images

## Overview

Quantity:	50 µg
Target:	ADAM17
Binding Specificity:	AA 215-315
Reactivity:	Human
Host:	Mouse
Clonality:	Monoclonal
Conjugate:	This ADAM17 antibody is un-conjugated
Application:	Western Blotting (WB), Immunohistochemistry (Paraffin-embedded Sections) (IHC (p)), Enzyme Immunoassay (EIA)

## Product Details

Immunogen:	Recombinant protein, ADAM17 (NP_003174, 215 a.a. ~ 315 a.a) partial recombinant protein with GST tag. MW of the GST tag alone is 26 KDa. Genename: ADAM17
Clone:	1F6
Isotype:	IgG2b
Specificity:	This antibody reacts to A Disintegrin And Metalloproteinase Domain 17 (ADAM17/TACE).
Purification:	Protein A Chromatography

## Target Details

Target:	ADAM17
---------	--------

## Target Details

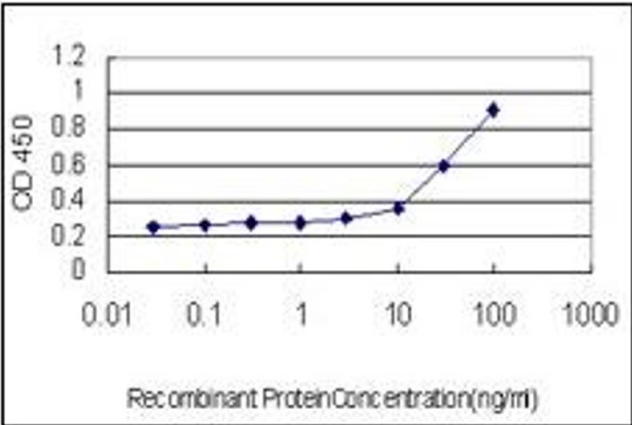
Alternative Name:	CD156b / ADAM17 ( <a href="#">ADAM17 Products</a> )
Background:	<p>Tumor-necrosis factor-<math>\alpha</math> is a proinflammatory cytokine and contributes to a variety of inflammatory disease responses and programmed cell death. TNF-<math>\alpha</math> is synthesized as a 26K type II membrane-bound precursor that is cleaved by a convertase to generate secreted 17K mature TNF-<math>\alpha</math>. TNF-<math>\alpha</math> converting enzyme (TACE) protein was recently purified and the human and mouse TACE cDNAs were cloned by several groups separately. TACE is a membrane-bound metalloprotease-disintegrin in the family of mammalian ADAM (for a disintegrin and metalloprotease). TACE also processes other cell surface proteins, including TNF receptor, TGF<math>\alpha</math>, the L-selectin adhesion molecule, and alpha-cleavage of amyloid protein precursor (APP). TACE mRNA is expressed in a variety of human and murine tissues. TACE was selected as one of the few targets in cytokine activation by the Eighth International Conference of the Inflammation Research Association. ADAM17 is a Metallopeptidase M12B type protease. Synonyms: CSVP, Disintegrin and metalloproteinase domain-containing protein 17, Snake venom-like protease, TACE, TNF-<math>\alpha</math> convertase, TNF-<math>\alpha</math>-converting enzyme</p>
Gene ID:	6868
NCBI Accession:	<a href="#">NP_003174</a>
UniProt:	<a href="#">P78536</a>
Pathways:	<a href="#">Notch Signaling</a> , <a href="#">EGFR Signaling Pathway</a> , <a href="#">Neurotrophin Signaling Pathway</a> , <a href="#">Response to Growth Hormone Stimulus</a>

## Application Details

Application Notes:	Optimal working dilution should be determined by the investigator.
Restrictions:	For Research Use only

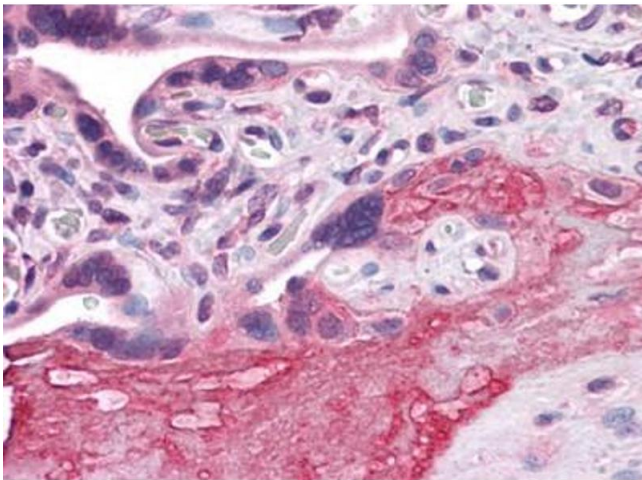
## Handling

Buffer:	PBS, pH 7.2
Handling Advice:	Avoid repeated freezing and thawing.
Storage:	-20 °C



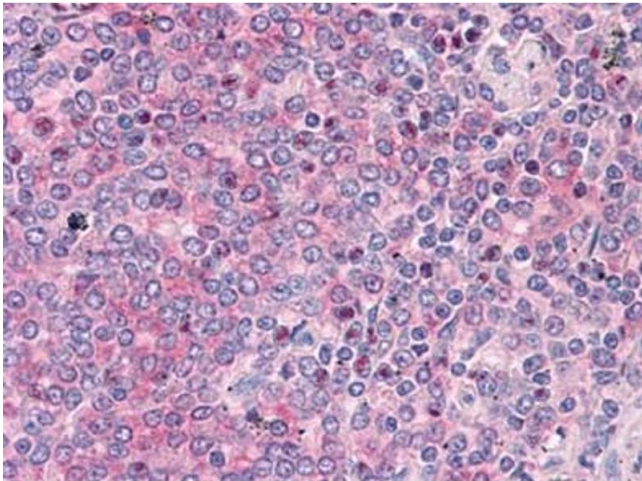
ELISA

Image 1.



Immunohistochemistry

Image 2.



Immunohistochemistry

Image 3.

Please check the [product details page](#) for more images. Overall 4 images are available for ABIN614668.