



[Go to Product page](#)

Datasheet for ABIN6146745
anti-RBBP7 antibody (AA 1-230)

3 Images

Overview

Quantity:	100 µL
Target:	RBBP7
Binding Specificity:	AA 1-230
Reactivity:	Human
Host:	Rabbit
Clonality:	Polyclonal
Conjugate:	This RBBP7 antibody is un-conjugated
Application:	Western Blotting (WB), Immunofluorescence (IF), Chromatin Immunoprecipitation (ChIP)

Product Details

Immunogen:	Recombinant fusion protein containing a sequence corresponding to amino acids 1-230 of human RBBP7 (NP_002884.1).
Sequence:	MASKEMFEDT VEERVINEEY KIWKKNTPFL YDLVMTHALQ WPSLTVQWLP EVTKPEGKDY ALHWLVLGTH TSDEQNHLVV ARVHIPNDDA QFDASHCDSK KGEFGGFGSV TGKIECEIKI NHEGEVNRAR YMPQNPPIIA TKTPSSDVLV FDYTKHPAKP DPSGECNPDL RLRGHQKEGY GLSWNSNLSG HLLSASDDHT VCLWDINAGP KEGKIVDAKA IFTGHSAVVE
Isotype:	IgG
Cross-Reactivity:	Human, Mouse, Rat
Characteristics:	Polyclonal Antibodies

Target Details

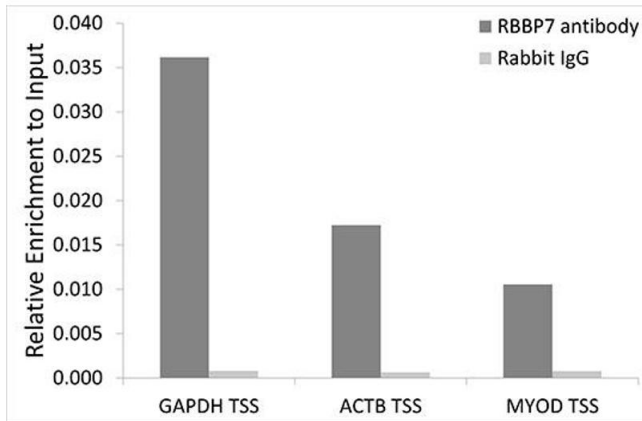
Target:	RBBP7
Alternative Name:	RBBP7 (RBBP7 Products)
Background:	<p>This protein is a ubiquitously expressed nuclear protein and belongs to a highly conserved subfamily of WD-repeat proteins. It is found among several proteins that binds directly to retinoblastoma protein, which regulates cell proliferation. The encoded protein is found in many histone deacetylase complexes, including mSin3 co-repressor complex. It is also present in protein complexes involved in chromatin assembly. This protein can interact with BRCA1 tumor-suppressor gene and may have a role in the regulation of cell proliferation and differentiation. Two transcript variants encoding different isoforms have been found for this gene.,RBBP7,RbAp46,Epigenetics & Nuclear Signaling,Chromatin Remodeling,Cell Biology & Developmental Biology,Cell Cycle,RBBP7</p>
Molecular Weight:	47 kDa/52 kDa
Gene ID:	5931
UniProt:	Q16576

Application Details

Application Notes:	WB,1:500 - 1:2000,IF,1:50 - 1:200,ChIP,1:50 - 1:200
Restrictions:	For Research Use only

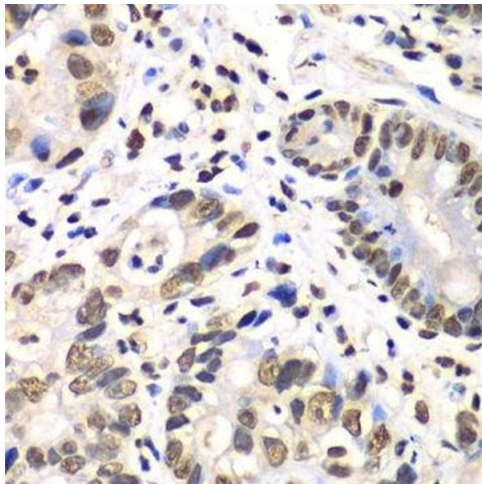
Handling

Format:	Liquid
Buffer:	PBS with 0.02 % sodium azide,50 % glycerol, pH 7.3.
Preservative:	Sodium azide
Precaution of Use:	This product contains Sodium azide: a POISONOUS AND HAZARDOUS SUBSTANCE which should be handled by trained staff only.
Storage:	-20 °C
Storage Comment:	Store at -20°C. Avoid freeze / thaw cycles.



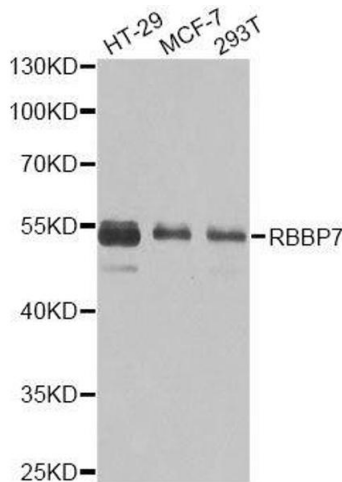
Chromatin Immunoprecipitation

Image 1. Chromatin immunoprecipitation analysis of extracts of 293T cells, using RBBP7 antibody (ABIN6128621, ABIN6146745, ABIN6146747 and ABIN6217460) and rabbit IgG. The amount of immunoprecipitated DNA was checked by quantitative PCR. Histogram was constructed by the ratios of the immunoprecipitated DNA to the input.



Immunohistochemistry (Paraffin-embedded Sections)

Image 2. Immunohistochemistry of paraffin-embedded human gastric cancer using RBBP7 antibody.



Western Blotting

Image 3. Western blot analysis of extracts of various cell lines, using RBBP7 antibody.