



[Go to Product page](#)

Datasheet for ABIN6146763
anti-RBM15B antibody (AA 540-720)

1 Image

Overview

Quantity:	100 µL
Target:	RBM15B
Binding Specificity:	AA 540-720
Reactivity:	Human
Host:	Rabbit
Clonality:	Polyclonal
Conjugate:	This RBM15B antibody is un-conjugated
Application:	Western Blotting (WB)

Product Details

Immunogen:	Recombinant fusion protein containing a sequence corresponding to amino acids 540-720 of human RBM15B (NP_037418.3).
Sequence:	DRDRTFLEGD WTSPSKSSDR RNSLEGYSRS VRSRSGERWG ADGDRGLPKP WEERRKRRSL SSDRGRTHS PYEERSRTKG SGQQSERGSD RTPERSRKEN HSSEGTKESS SNLSNSNRHG AEERGHHHHH HEAADSSHGK KARDSERNHR TTEAEPKPLE EPKHETKCLK NLSEYAQTLQ L
Isotype:	IgG
Cross-Reactivity:	Human, Mouse
Characteristics:	Polyclonal Antibodies

Target Details

Target:	RBM15B
---------	--------

Target Details

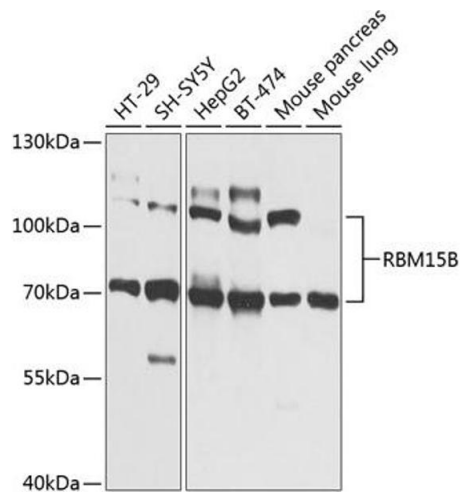
Alternative Name:	RBM15B (RBM15B Products)
Background:	Members of the SPEN (Split-end) family of proteins, including RBM15B, have repressor function in several signaling pathways and may bind to RNA through interaction with spliceosome components (Hiriart et al., 2005 [PubMed 16129689]).[supplied by OMIM, Feb 2009],RBM15B,HUMAGCGB,OTT3,Epigenetics & Nuclear Signaling,RNA Binding,Signal Transduction,RBM15B
Molecular Weight:	63 kDa/97 kDa
Gene ID:	29890
UniProt:	Q8NDT2

Application Details

Application Notes:	WB,1:500 - 1:2000
Comment:	HIGH QUALITY
Restrictions:	For Research Use only

Handling

Format:	Liquid
Buffer:	PBS with 0.02 % sodium azide,50 % glycerol, pH 7.3.
Preservative:	Sodium azide
Precaution of Use:	This product contains Sodium azide: a POISONOUS AND HAZARDOUS SUBSTANCE which should be handled by trained staff only.
Storage:	-20 °C
Storage Comment:	Store at -20°C. Avoid freeze / thaw cycles.



Western Blotting

Image 1. Western blot analysis of extracts of various cell lines, using RBM15B Antibody (ABIN6133322, ABIN6146763, ABIN6146764 and ABIN6225211) at 1:1000 dilution. Secondary antibody: HRP Goat Anti-Rabbit IgG (H+L) (ABIN1684268 and ABIN3020597) at 1:10000 dilution. Lysates/proteins: 25 µg per lane. Blocking buffer: 3% nonfat dry milk in TBST. Detection: ECL Basic Kit (RM00020). Exposure time: 1s.