

Datasheet for ABIN6146775
anti-RBM3 antibody (AA 1-157)



[Go to Product page](#)

4 Images

Overview

Quantity:	100 µL
Target:	RBM3
Binding Specificity:	AA 1-157
Reactivity:	Human
Host:	Rabbit
Clonality:	Polyclonal
Conjugate:	This RBM3 antibody is un-conjugated
Application:	Western Blotting (WB), Immunohistochemistry (IHC), Immunofluorescence (IF)

Product Details

Immunogen:	Recombinant fusion protein containing a sequence corresponding to amino acids 1-157 of human RBM3 (NP_006734.1).
Sequence:	MSSEEGKLFV GGLNFNTDEQ ALEDHFSSFG PISEVVVVKD RETQSRGFG FITFTNPEHA SVAMRAMNGE SLDGRQIRVD HAGKSARGTR GGGFGAHGRG RSYSRGGGDQ GYGSGRYYDS RPGGYGYGYG RSRDYNGRNQ GGYDRYSGGN YRDNYDN
Isotype:	IgG
Cross-Reactivity:	Human, Mouse, Rat
Characteristics:	Polyclonal Antibodies

Target Details

Target:	RBM3
---------	------

Target Details

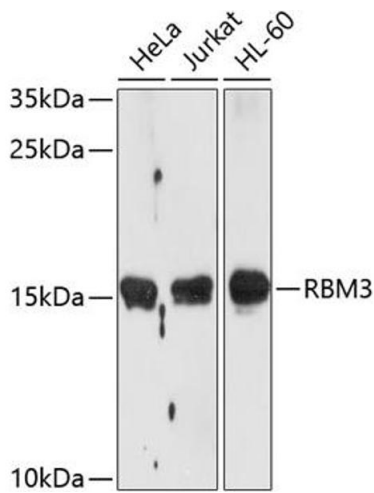
Alternative Name:	RBM3 (RBM3 Products)
Background:	This gene is a member of the glycine-rich RNA-binding protein family and encodes a protein with one RNA recognition motif (RRM) domain. Expression of this gene is induced by cold shock and low oxygen tension. A pseudogene exists on chromosome 1. Multiple alternatively spliced transcript variants that are predicted to encode different isoforms have been characterized although some of these variants fit nonsense-mediated decay (NMD) criteria.,RBM3,IS1-RNPL,RNPL,Epigenetics & Nuclear Signaling,RNA Binding,Cancer,Invasion and Metastasis,Endocrine & Metabolism,RBM3
Molecular Weight:	17 kDa
Gene ID:	5935
UniProt:	P98179

Application Details

Application Notes:	WB,1:200 - 1:2000,IHC,1:50 - 1:200,IF,1:50 - 1:200
Comment:	HIGH QUALITY
Restrictions:	For Research Use only

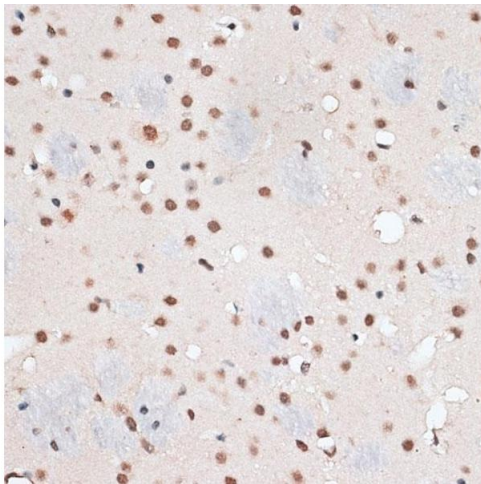
Handling

Format:	Liquid
Buffer:	PBS with 0.02 % sodium azide,50 % glycerol, pH 7.3.
Preservative:	Sodium azide
Precaution of Use:	This product contains Sodium azide: a POISONOUS AND HAZARDOUS SUBSTANCE which should be handled by trained staff only.
Storage:	-20 °C
Storage Comment:	Store at -20°C. Avoid freeze / thaw cycles.



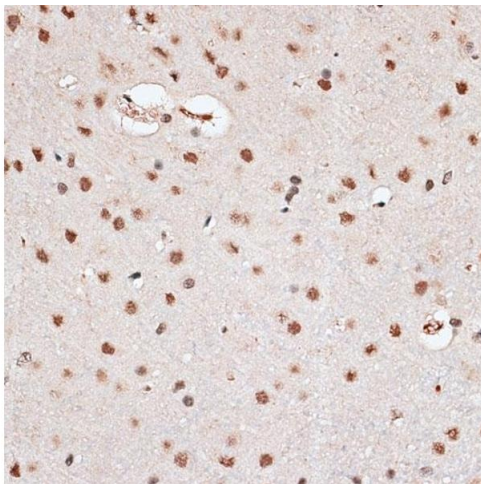
Western Blotting

Image 1. Western blot analysis of extracts of various cell lines, using RBM3 antibody at 1:1000 dilution. Secondary antibody: HRP Goat Anti-Rabbit IgG (H+L) (ABIN1684268 and ABIN3020597) at 1:10000 dilution. Lysates/proteins: 25 µg per lane. Blocking buffer: 3% nonfat dry milk in TBST. Detection: ECL Basic Kit (RM00020). Exposure time: 60s.



Immunohistochemistry

Image 2. Immunohistochemistry of paraffin-embedded mouse brain using RBM3 antibody at dilution of 1:100 (40x lens). Perform microwave antigen retrieval with 10 mM PBS buffer pH 7.2 before commencing with IHC staining protocol.



Immunohistochemistry

Image 3. Immunohistochemistry of paraffin-embedded rat brain using RBM3 antibody at dilution of 1:100 (40x lens). Perform microwave antigen retrieval with 10 mM PBS buffer pH 7.2 before commencing with IHC staining protocol.

Please check the [product details page](#) for more images. Overall 4 images are available for ABIN6146775.