



Datasheet for ABIN6146791
anti-RBMS1 antibody (AA 1-260)



[Go to Product page](#)

1 Image

Overview

Quantity:	100 µL
Target:	RBMS1
Binding Specificity:	AA 1-260
Reactivity:	Human
Host:	Rabbit
Clonality:	Polyclonal
Conjugate:	This RBMS1 antibody is un-conjugated
Application:	Western Blotting (WB), Immunohistochemistry (IHC), Immunofluorescence (IF)

Product Details

Immunogen:	Recombinant fusion protein containing a sequence corresponding to amino acids 1-260 of human RBMS1 (NP_002888.1).
Sequence:	MGKVVWQQMY PQYATYYYPQ YLQAKQSLVP AHPMAPPSPS TTSSNNNSSS SSNSGWDQLS KTNLYIRGLP PHTTDQDLVK LCQPYGKIVS TKAILDKTTN KCKGYGFVDF DSPAAAQKAV SALKASGVQA QMAKQQEQDP TNLYISNLPL SMDEQELENM LKPFQVIST RILRDSSGTS RGVGFARMES TEKCEAVIGH FNGKFIKTPP GVSAPTEPLL CKFADGGQKK RQNPNKYIPN GRPWHREGEA GMTLTYPPTT
Isotype:	IgG
Cross-Reactivity:	Human
Characteristics:	Polyclonal Antibodies

Target Details

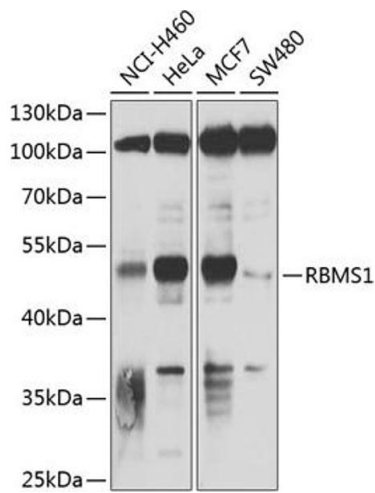
Target:	RBMS1
Alternative Name:	RBMS1 (RBMS1 Products)
Background:	<p>This gene encodes a member of a small family of proteins which bind single stranded DNA/RNA. These proteins are characterized by the presence of two sets of ribonucleoprotein consensus sequence (RNP-CS) that contain conserved motifs, RNP1 and RNP2, originally described in RNA binding proteins, and required for DNA binding. These proteins have been implicated in such diverse functions as DNA replication, gene transcription, cell cycle progression and apoptosis. Several transcript variants, resulting from alternative splicing and encoding different isoforms, have been described. A pseudogene for this locus is found on chromosome 12.,RBMS1,C2orf12,HCC-4,MSSP,MSSP-1,MSSP-2,MSSP-3,SCR2,YC1,Epigenetics & Nuclear Signaling,RNA Binding,RBMS1</p>
Molecular Weight:	4 kDa/44 kDa
Gene ID:	5937
UniProt:	P29558

Application Details

Application Notes:	WB,1:200 - 1:1000,IHC,1:20 - 1:100,IF,1:20 - 1:100
Restrictions:	For Research Use only

Handling

Format:	Liquid
Buffer:	PBS with 0.02 % sodium azide,50 % glycerol, pH 7.3.
Preservative:	Sodium azide
Precaution of Use:	This product contains Sodium azide: a POISONOUS AND HAZARDOUS SUBSTANCE which should be handled by trained staff only.
Storage:	-20 °C
Storage Comment:	Store at -20°C. Avoid freeze / thaw cycles.



Western Blotting

Image 1. Western blot analysis of extracts of various cell lines, using RBMS1 antibody (ABIN6128636, ABIN6146791, ABIN6146792 and ABIN6220045) at 1:1000 dilution. Secondary antibody: HRP Goat Anti-Rabbit IgG (H+L) (ABIN1684268 and ABIN3020597) at 1:10000 dilution. Lysates/proteins: 25 µg per lane. Blocking buffer: 3 % nonfat dry milk in TBST. Detection: ECL Basic Kit (RM00020). Exposure time: 30s.