



[Go to Product page](#)

Datasheet for ABIN6146805
anti-RBPJ antibody (AA 1-260)

3 Images

Overview

Quantity:	100 µL
Target:	RBPJ
Binding Specificity:	AA 1-260
Reactivity:	Human
Host:	Rabbit
Clonality:	Polyclonal
Conjugate:	This RBPJ antibody is un-conjugated
Application:	Western Blotting (WB), Immunohistochemistry (IHC)

Product Details

Immunogen:	Recombinant fusion protein containing a sequence corresponding to amino acids 1-260 of human RBPJ (NP_976028.1).
Sequence:	MGGCRKFGER PPPKRLTREA MRNYLKERGD QTVLILHAKV AQKSYGNEKR FFCPPPCVYL MGSGWKKKKE QMERDGCSEQ ESQPCAFIGI GNSDQEMQQL NLEGKNYCTA KTLYISDSDK RKHFMLSVMK FYGNSDDIGV FLSKRIKVIS KPSKKKQSLK NADLCIASGT KVALFNRLRS QTVSTRYLHV EGGNFHASSQ QWGAFFIHL DDESEGEF TVRDGYIHYG QTVKLVCSVT GMALPRLIIR KVDKQTALLD
Isotype:	IgG
Cross-Reactivity:	Human, Mouse, Rat
Characteristics:	Polyclonal Antibodies

Target Details

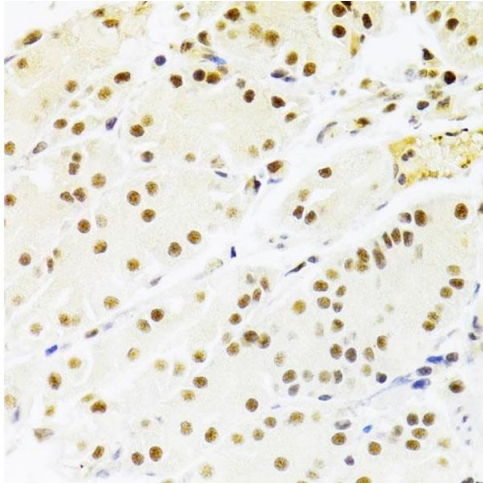
Target:	RBPJ
Alternative Name:	RBPJ (RBPJ Products)
Background:	The protein encoded by this gene is a transcriptional regulator important in the Notch signaling pathway. The encoded protein acts as a repressor when not bound to Notch proteins and an activator when bound to Notch proteins. It is thought to function by recruiting chromatin remodeling complexes containing histone deacetylase or histone acetylase proteins to Notch signaling pathway genes. Several transcript variants encoding different isoforms have been found for this gene, and several pseudogenes of this gene exist on chromosome 9.,RBPJ,AOS3,CBF1,IGKJRB,IGKJRB1,KBF2,RBP-J,RBPJK,RBPSUH,SUH,csl,Epigenetics & Nuclear Signaling,Transcription Factors,Signal Transduction,Cell Biology & Developmental Biology,Notch Signaling Pathway,Neuroscience,Stem Cells,RBPJ
Molecular Weight:	45 kDa/47 kDa/51 kDa/54 kDa/55 kDa
Gene ID:	3516
UniProt:	Q06330
Pathways:	Notch Signaling , Stem Cell Maintenance , Smooth Muscle Cell Migration

Application Details

Application Notes:	WB,1:500 - 1:2000,IHC,1:50 - 1:200
Restrictions:	For Research Use only

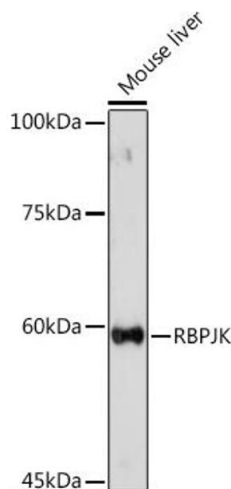
Handling

Format:	Liquid
Buffer:	PBS with 0.02 % sodium azide,50 % glycerol, pH 7.3.
Preservative:	Sodium azide
Precaution of Use:	This product contains Sodium azide: a POISONOUS AND HAZARDOUS SUBSTANCE which should be handled by trained staff only.
Storage:	-20 °C
Storage Comment:	Store at -20°C. Avoid freeze / thaw cycles.



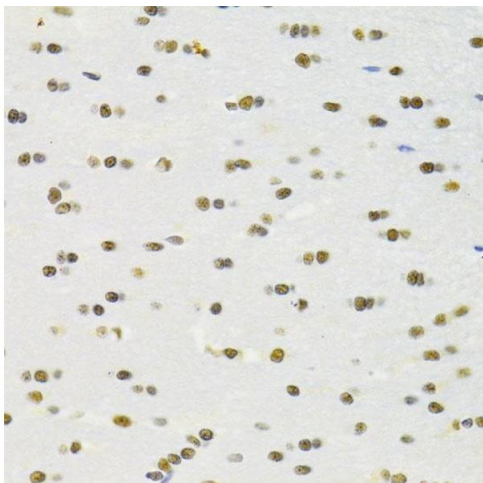
Immunohistochemistry

Image 1. Immunohistochemistry of paraffin-embedded human stomach using RBPJKB Antibody (ABIN6131815, ABIN6146805, ABIN6146806 and ABIN6221327) at dilution of 1:100 (40x lens). Perform microwave antigen retrieval with 10 mM PBS buffer pH 7.2 before commencing with IHC staining protocol.



Western Blotting

Image 2. Western blot analysis of extracts of Mouse liver, using RBPJKB Rabbit pAb (ABIN6131815, ABIN6146805, ABIN6146806 and ABIN6221327) at 1:500 dilution. Secondary antibody: HRP Goat Anti-Rabbit IgG (H+L) (ABIN1684268 and ABIN3020597) at 1:10000 dilution. Lysates/proteins: 25 µg per lane. Blocking buffer: 3 % nonfat dry milk in TBST. Detection: ECL Basic Kit (RM00020). Exposure time: 180s.



Immunohistochemistry

Image 3. Immunohistochemistry of paraffin-embedded rat brain using RBPJKB Antibody (ABIN6131815, ABIN6146805, ABIN6146806 and ABIN6221327) at dilution of 1:100 (40x lens). Perform microwave antigen retrieval with 10 mM PBS buffer pH 7.2 before commencing with IHC staining protocol.