



Datasheet for ABIN6146817
anti-RCC1 antibody (AA 1-240)



[Go to Product page](#)

13 Images

Overview

Quantity:	100 µL
Target:	RCC1
Binding Specificity:	AA 1-240
Reactivity:	Human
Host:	Rabbit
Clonality:	Polyclonal
Conjugate:	This RCC1 antibody is un-conjugated
Application:	Western Blotting (WB), Immunohistochemistry (IHC), Immunofluorescence (IF)

Product Details

Immunogen:	Recombinant fusion protein containing a sequence corresponding to amino acids 1-240 of human RCC1 (NP_001260.1).
Sequence:	MSPKRIAKRR SPPADAI PKS KKVK VSHRSH STEPGLV LTL GQGDV GQLGL GENVMERKKP ALVSIPEDVV QAEAGGMHTV CLSKSGQVYS FGCNDEGALG RDT SVEGSEM VPGKVELQE K VVQVSAGDSH TAALTDDGRV FLWGSFRDNN GVIGLLEPMK KSMVPVQVQL DVPVVKVASG NDHLVMLTAD GDLYTLGCGE QGQLGRVPEL FANRGG RQGL ERLLV PKCVM LKSRGSRGHV
Isotype:	IgG
Cross-Reactivity:	Human, Mouse, Rat
Characteristics:	Polyclonal Antibodies

Target Details

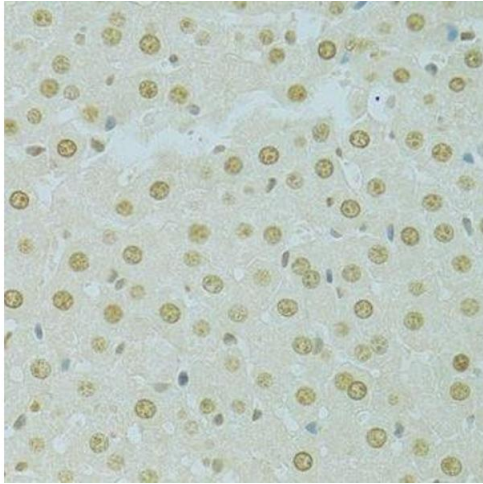
Target:	RCC1
Alternative Name:	RCC1 (RCC1 Products)
Background:	Guanine-nucleotide releasing factor that promotes the exchange of Ran-bound GDP by GTP, and thereby plays an important role in RAN-mediated functions in nuclear import and mitosis. Contributes to the generation of high levels of chromosome-associated, GTP-bound RAN, which is important for mitotic spindle assembly and normal progress through mitosis. Via its role in maintaining high levels of GTP-bound RAN in the nucleus, contributes to the release of cargo proteins from importins after nuclear import. Involved in the regulation of onset of chromosome condensation in the S phase. Binds both to the nucleosomes and double-stranded DNA.,RCC1,CHC1,RCC1-I,SNHG3-RCC1,Cell Biology & Developmental Biology,Cell Cycle,RCC1
Molecular Weight:	44 kDa/48 kDa
Gene ID:	1104
UniProt:	P18754
Pathways:	Chromatin Binding , Protein targeting to Nucleus

Application Details

Application Notes:	WB,1:1000 - 1:2000,IHC,1:50 - 1:200,IF,1:50 - 1:200
Comment:	HIGH QUALITY
Restrictions:	For Research Use only

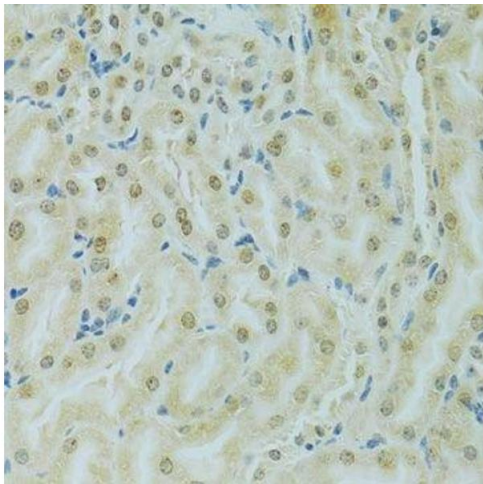
Handling

Format:	Liquid
Buffer:	PBS with 0.02 % sodium azide,50 % glycerol, pH 7.3.
Preservative:	Sodium azide
Precaution of Use:	This product contains Sodium azide: a POISONOUS AND HAZARDOUS SUBSTANCE which should be handled by trained staff only.
Storage:	-20 °C
Storage Comment:	Store at -20°C. Avoid freeze / thaw cycles.



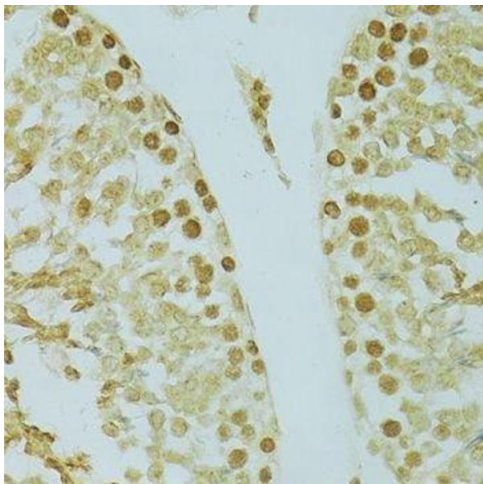
Immunohistochemistry (Paraffin-embedded Sections)

Image 1. Immunohistochemistry of paraffin-embedded rat liver using RCC1 antibody.



Immunohistochemistry (Paraffin-embedded Sections)

Image 2. Immunohistochemistry of paraffin-embedded mouse kidney using RCC1 antibody.



Immunohistochemistry (Paraffin-embedded Sections)

Image 3. Immunohistochemistry of paraffin-embedded rat testis using RCC1 antibody.

Please check the [product details page](#) for more images. Overall 13 images are available for ABIN6146817.