

Datasheet for ABIN6146821
anti-RCL1 antibody (AA 1-300)



[Go to Product page](#)

1 Image

Overview

Quantity:	100 µL
Target:	RCL1
Binding Specificity:	AA 1-300
Reactivity:	Human
Host:	Rabbit
Clonality:	Polyclonal
Conjugate:	This RCL1 antibody is un-conjugated
Application:	Western Blotting (WB)

Product Details

Immunogen:	Recombinant fusion protein containing a sequence corresponding to amino acids 1-300 of human RCL1 (NP_005763.3).
Sequence:	MATQAHLSY AGCNFLRQRL VLSTLSGRP V KIRKIRARDD NPGLRDFEAS FIRLLDKITN GSRIEINQTG TTLYYQPGLL YGGSVEHDCS VLRGIGYYLE SLLCLAPFMK HPLKIVLRGV TNDQVDPSVD VLKATALPLL KQFGIDGESF ELKIVRRGMP PGGGGEVVFS CPVRKVLKPI QLTDPGKIKR IRGMAYSVRV SPQMANRIVD SARSILNKFI PDIYITDHM KGVNSGKSPG FGLSLVAETT SGTFLSAELA SNPQQGAAV LPEDLGRNCA RLLLEEIYRG GCVDSTNQSL
Isotype:	IgG
Cross-Reactivity:	Human, Mouse, Rat
Characteristics:	Polyclonal Antibodies

Target Details

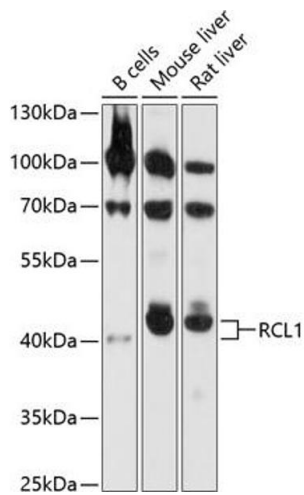
Target:	RCL1
Alternative Name:	RCL1 (RCL1 Products)
Background:	Does not have cyclase activity. Plays a role in 40S-ribosomal-subunit biogenesis in the early pre-rRNA processing steps at sites A0, A1 and A2 that are required for proper maturation of the 18S RNA (By similarity.,RCL1,RNAC,RPCL1,Epigenetics & Nuclear Signaling,RCL1
Molecular Weight:	20 kDa/40 kDa
Gene ID:	10171
UniProt:	Q9Y2P8

Application Details

Application Notes:	WB,1:500 - 1:2000
Comment:	HIGH QUALITY
Restrictions:	For Research Use only

Handling

Format:	Liquid
Buffer:	PBS with 0.02 % sodium azide,50 % glycerol, pH 7.3.
Preservative:	Sodium azide
Precaution of Use:	This product contains Sodium azide: a POISONOUS AND HAZARDOUS SUBSTANCE which should be handled by trained staff only.
Storage:	-20 °C
Storage Comment:	Store at -20°C. Avoid freeze / thaw cycles.



Western Blotting

Image 1. Western blot analysis of extracts of various cell lines, using RCL1 antibody at 1:1000 dilution. Secondary antibody: HRP Goat Anti-Rabbit IgG (H+L) (ABIN1684268 and ABIN3020597) at 1:10000 dilution. Lysates/proteins: 25 µg per lane. Blocking buffer: 3% nonfat dry milk in TBST. Detection: ECL Basic Kit (RM00020). Exposure time: 10s.