

Datasheet for ABIN6146826
anti-RCN2 antibody (AA 23-180)



[Go to Product page](#)

4 Images

Overview

Quantity:	100 µL
Target:	RCN2
Binding Specificity:	AA 23-180
Reactivity:	Human
Host:	Rabbit
Clonality:	Polyclonal
Conjugate:	This RCN2 antibody is un-conjugated
Application:	Western Blotting (WB)

Product Details

Immunogen:	Recombinant fusion protein containing a sequence corresponding to amino acids 23-180 of human RCN2 (NP_002893.1).
Sequence:	GKAEELHYPL GERRSDYDRE ALLGVQEDVD EYVKLGHEEQ QKRLQAIKK IDLSDSGFLT ESELSSWIQM SFKHYAMQEA KQFVEYDKN SDDTVTWDEY NIQMYDRVID FENTALDDA EEESFRKLHL KDKKRFKAN QDSGPGLSLE EFIAFEHP
Isotype:	IgG
Cross-Reactivity:	Human, Mouse, Rat
Characteristics:	Polyclonal Antibodies

Target Details

Target:	RCN2
---------	------

Target Details

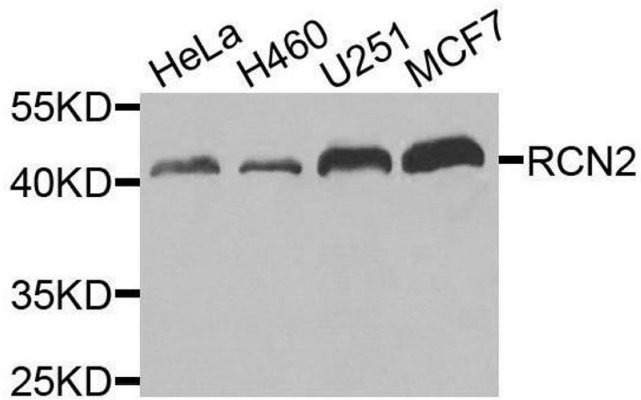
Alternative Name:	RCN2 (RCN2 Products)
Background:	The protein encoded by this gene is a calcium-binding protein located in the lumen of the ER. The protein contains six conserved regions with similarity to a high affinity Ca(+2)-binding motif, the EF-hand. This gene maps to the same region as type 4 Bardet-Biedl syndrome, suggesting a possible causative role for this gene in the disorder. Alternatively spliced transcript variants encoding different isoforms have been found for this gene.,RCN2,E6BP,ERC-55,ERC55,TCBP49,Signal Transduction,Neuroscience,Calcium Signaling,RCN2
Molecular Weight:	36 kDa/39 kDa
Gene ID:	5955
UniProt:	Q14257

Application Details

Application Notes:	WB,1:500 - 1:2000
Comment:	HIGH QUALITY
Restrictions:	For Research Use only

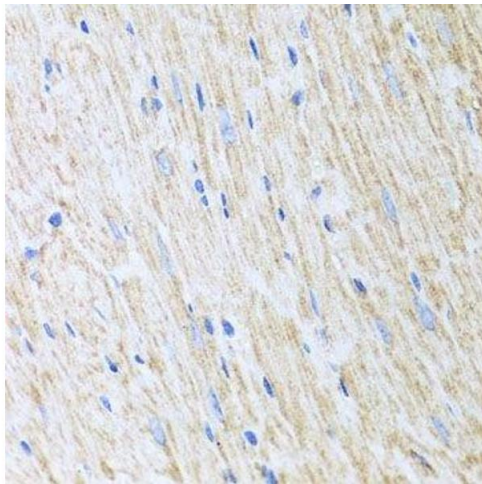
Handling

Format:	Liquid
Buffer:	PBS with 0.02 % sodium azide,50 % glycerol, pH 7.3.
Preservative:	Sodium azide
Precaution of Use:	This product contains Sodium azide: a POISONOUS AND HAZARDOUS SUBSTANCE which should be handled by trained staff only.
Storage:	-20 °C
Storage Comment:	Store at -20°C. Avoid freeze / thaw cycles.



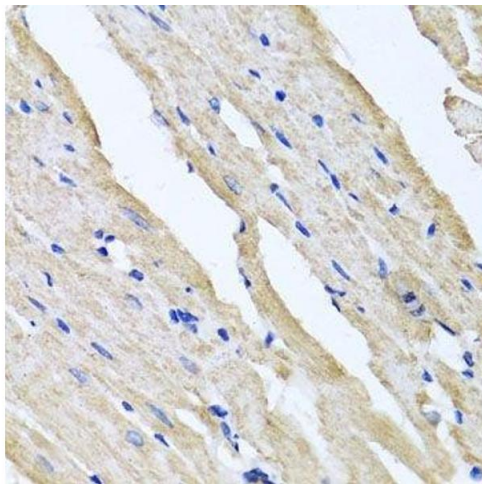
Western Blotting

Image 1. Western blot analysis of extracts of various cell lines, using RCN2 antibody.



Immunohistochemistry (Paraffin-embedded Sections)

Image 2. Immunohistochemistry of paraffin-embedded mouse heart using RCN2 antibody.



Immunohistochemistry (Paraffin-embedded Sections)

Image 3. Immunohistochemistry of paraffin-embedded rat heart using RCN2 antibody.

Please check the [product details page](#) for more images. Overall 4 images are available for ABIN6146826.