



[Go to Product page](#)

Datasheet for ABIN6146832
anti-Recoverin antibody (AA 1-200)

4 Images

Overview

Quantity:	100 µL
Target:	Recoverin (RCVRN)
Binding Specificity:	AA 1-200
Reactivity:	Human
Host:	Rabbit
Clonality:	Polyclonal
Conjugate:	This Recoverin antibody is un-conjugated
Application:	Western Blotting (WB), Immunohistochemistry (IHC), Immunofluorescence (IF)

Product Details

Immunogen:	Recombinant fusion protein containing a sequence corresponding to amino acids 1-200 of human RCVRN (NP_002894.1).
Sequence:	MGNSKSGALS KEILEELQLN TKFSEELCS WYQSFLKDCP TGRITQQQFQ SIYAKFFPDT DPKAYAQHV FRSFDSNLDGT LDFKEYVIAL HMTTAGKTNQ KLEWAFSLYD VDGNGTISK N EVLEIVMAIF KMITPEDVKL LPDDENTPEK RAEKIWKYFG KNDDDKLTEK EFIEGTLANK EILRLIQFEP QKVKEKMKNA
Isotype:	IgG
Cross-Reactivity:	Human, Mouse, Rat
Characteristics:	Polyclonal Antibodies

Target Details

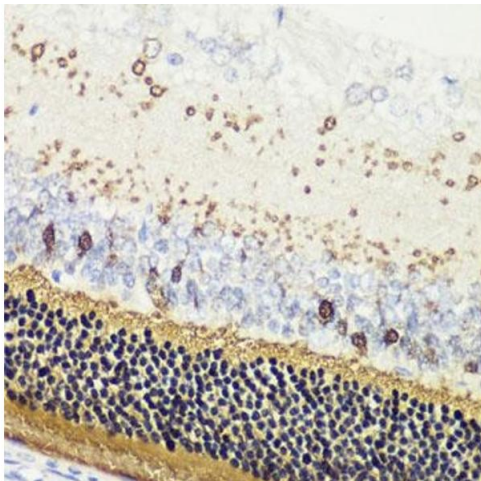
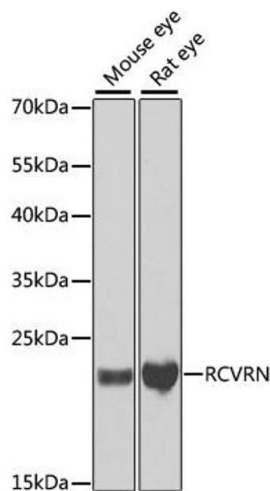
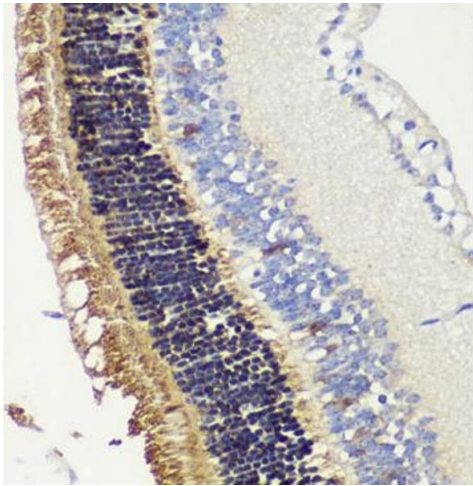
Target:	Recoverin (RCVRN)
Alternative Name:	RCVRN (RCVRN Products)
Background:	This gene encodes a member of the recoverin family of neuronal calcium sensors. The encoded protein contains three calcium-binding EF-hand domains and may prolong the termination of the phototransduction cascade in the retina by blocking the phosphorylation of photo-activated rhodopsin. Recoverin may be the antigen responsible for cancer-associated retinopathy.,RCVRN,RCV1,recoverin,Signal Transduction,Neuroscience,Calcium Signaling,RCVRN
Molecular Weight:	23 kDa
Gene ID:	5957
UniProt:	P35243
Pathways:	Regulation of G-Protein Coupled Receptor Protein Signaling , Phototransduction

Application Details

Application Notes:	WB,1:500 - 1:2000,IHC,1:50 - 1:200,IF,1:10 - 1:100
Comment:	HIGH QUALITY
Restrictions:	For Research Use only

Handling

Format:	Liquid
Buffer:	PBS with 0.02 % sodium azide,50 % glycerol, pH 7.3.
Preservative:	Sodium azide
Precaution of Use:	This product contains Sodium azide: a POISONOUS AND HAZARDOUS SUBSTANCE which should be handled by trained staff only.
Storage:	-20 °C
Storage Comment:	Store at -20°C. Avoid freeze / thaw cycles.



Immunohistochemistry

Image 1. Immunohistochemistry of paraffin-embedded mouse retina using RCVRN antibody (ABIN6128676, ABIN6146832, ABIN6146833 and ABIN6222036) at dilution of 1:200 (40x lens). Perform microwave antigen retrieval with 10 mM PBS buffer pH 7.2 before commencing with IHC staining protocol.

Western Blotting

Image 2. Western blot analysis of extracts of various cell lines, using RCVRN antibody (ABIN6128676, ABIN6146832, ABIN6146833 and ABIN6222036) at 1:1000 dilution. Secondary antibody: HRP Goat Anti-Rabbit IgG (H+L) (ABIN1684268 and ABIN3020597) at 1:10000 dilution. Lysates/proteins: 25 µg per lane. Blocking buffer: 3 % nonfat dry milk in TBST. Detection: ECL Basic Kit (RM00020). Exposure time: 15s.

Immunohistochemistry

Image 3. Immunohistochemistry of paraffin-embedded rat retina using RCVRN antibody (ABIN6128676, ABIN6146832, ABIN6146833 and ABIN6222036) at dilution of 1:200 (40x lens). Perform microwave antigen retrieval with 10 mM PBS buffer pH 7.2 before commencing with IHC staining protocol.

Please check the [product details page](#) for more images. Overall 4 images are available for ABIN6146832.