



[Go to Product page](#)

Datasheet for ABIN6146846
anti-RECQL4 antibody (AA 231-330)

1 Image

Overview

Quantity:	100 µL
Target:	RECQL4
Binding Specificity:	AA 231-330
Reactivity:	Human
Host:	Rabbit
Clonality:	Polyclonal
Conjugate:	This RECQL4 antibody is un-conjugated
Application:	Western Blotting (WB)

Product Details

Immunogen:	Recombinant fusion protein containing a sequence corresponding to amino acids 231-330 of human RECQL4 (NP_004251.3).
Sequence:	GAGSQGPEAS AFQEVSIRVG SPQPSSSGGE KRRWNEEPWE SPAQVQQESS QAGPPSEGAG AVAVEEDPPG EPVQAQPPQP CSSPSNPRYH GLSPSSQARA
Isotype:	IgG
Cross-Reactivity:	Human, Mouse
Characteristics:	Polyclonal Antibodies

Target Details

Target:	RECQL4
---------	--------

Target Details

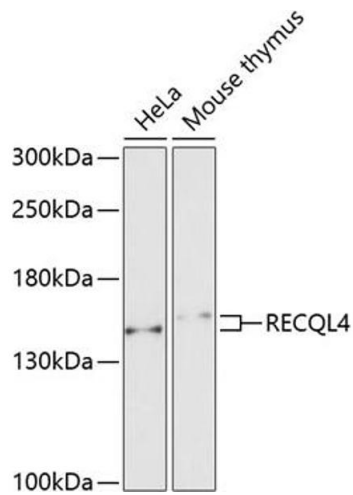
Alternative Name:	RECQL4 (RECQL4 Products)
Background:	<p>The protein encoded by this gene is a DNA helicase that belongs to the RecQ helicase family. DNA helicases unwind double-stranded DNA into single-stranded DNAs and may modulate chromosome segregation. This gene is predominantly expressed in thymus and testis. Mutations in this gene are associated with Rothmund-Thomson, RAPADILINO and Baller-Gerold syndromes.,RECQL4,RECQ4,Epigenetics & Nuclear Signaling,DNA Damage & Repair,RECQL4</p>
Molecular Weight:	133 kDa
Gene ID:	9401
UniProt:	O94761
Pathways:	Chromatin Binding

Application Details

Application Notes:	WB,1:500 - 1:2000
Restrictions:	For Research Use only

Handling

Format:	Liquid
Buffer:	PBS with 0.02 % sodium azide,50 % glycerol, pH 7.3.
Preservative:	Sodium azide
Precaution of Use:	This product contains Sodium azide: a POISONOUS AND HAZARDOUS SUBSTANCE which should be handled by trained staff only.
Storage:	-20 °C
Storage Comment:	Store at -20°C. Avoid freeze / thaw cycles.



Western Blotting

Image 1. Western blot analysis of extracts of various cell lines, using RECQL4 antibody (ABIN6130663, ABIN6146846, ABIN6146847 and ABIN6222575) at 1:1000 dilution. Secondary antibody: HRP Goat Anti-Rabbit IgG (H+L) (ABIN1684268 and ABIN3020597) at 1:10000 dilution. Lysates/proteins: 25 μ g per lane. Blocking buffer: 3 % nonfat dry milk in TBST. Detection: ECL Enhanced Kit (RM00021). Exposure time: 90s.