

Datasheet for ABIN6146853
anti-REG1A antibody (AA 50-150)



[Go to Product page](#)

1 Image

Overview

| | |
|----------------------|--------------------------------------|
| Quantity: | 100 µL |
| Target: | REG1A |
| Binding Specificity: | AA 50-150 |
| Reactivity: | Human |
| Host: | Rabbit |
| Clonality: | Polyclonal |
| Conjugate: | This REG1A antibody is un-conjugated |
| Application: | Western Blotting (WB) |

Product Details

| | |
|-------------------|--|
| Immunogen: | A synthetic peptide corresponding to a sequence within amino acids 50-150 of human REG1A (NP_002900.2). |
| Sequence: | FNEDRETWVD ADLYCQNMNS GNLVSVLTQA EGAFVASLIK ESGTDDFNWV IGLHDPKKNR RWHWSSGSLV SYKSWGIGAP SSVNPGYCVS LTSSTGFQKW K |
| Isotype: | IgG |
| Cross-Reactivity: | Human, Mouse, Rat |
| Characteristics: | Polyclonal Antibodies |

Target Details

| | |
|---------|-------|
| Target: | REG1A |
|---------|-------|

Target Details

Alternative Name: [REG1A \(REG1A Products\)](#)

Background: This gene is a type I subclass member of the Reg gene family. The Reg gene family is a multigene family grouped into four subclasses, types I, II, III and IV, based on the primary structures of the encoded proteins. This gene encodes a protein that is secreted by the exocrine pancreas. It is associated with islet cell regeneration and diabetogenesis and may be involved in pancreatic lithogenesis. Reg family members REG1B, REGL, PAP and this gene are tandemly clustered on chromosome 2p12 and may have arisen from the same ancestral gene by gene duplication.,REG1A,ICRF,P19,PSP,PSPS,PSPS1,PTP,REG,Cancer,Tumor biomarkers,Cell Biology & Developmental Biology,REG1A

Molecular Weight: 18 kDa

Gene ID: 5967

UniProt: [P05451](#)

Application Details

Application Notes: WB,1:500 - 1:2000

Restrictions: For Research Use only

Handling

Format: Liquid

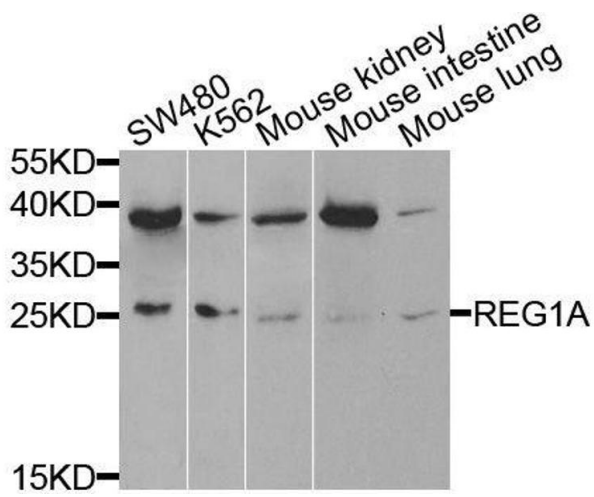
Buffer: PBS with 0.02 % sodium azide,50 % glycerol, pH 7.3.

Preservative: Sodium azide

Precaution of Use: This product contains Sodium azide: a POISONOUS AND HAZARDOUS SUBSTANCE which should be handled by trained staff only.

Storage: -20 °C

Storage Comment: Store at -20°C. Avoid freeze / thaw cycles.



Western Blotting

Image 1. Western blot analysis of extracts of various cell lines, using REG1A antibody.