



[Go to Product page](#)

Datasheet for ABIN6146855
anti-REG3A antibody (AA 27-175)

4 Images

Overview

Quantity:	100 µL
Target:	REG3A
Binding Specificity:	AA 27-175
Reactivity:	Human
Host:	Rabbit
Clonality:	Polyclonal
Conjugate:	This REG3A antibody is un-conjugated
Application:	Western Blotting (WB), Immunohistochemistry (IHC)

Product Details

Immunogen:	Recombinant fusion protein containing a sequence corresponding to amino acids 27-175 of human REG3A (NP_002571.1).
Sequence:	EEPQRELPSA RIRCPKGSKA YGSHCYALFL SPKSWTDADL ACQKRPSGNL VSVLSGAEGS FVSSLVKSIG NSYSYVWIGL HDPTQGTEPN GEGWEWSSSD VMNYFAWERN PSTISSPGHC ASLSRSTAFI RWKDYNCNVR LPYVCKFTD
Isotype:	IgG
Cross-Reactivity:	Human, Mouse, Rat
Characteristics:	Polyclonal Antibodies

Target Details

Target:	REG3A
---------	-------

Target Details

Alternative Name: REG3A ([REG3A Products](#))

Background: This gene encodes a pancreatic secretory protein that may be involved in cell proliferation or differentiation. It has similarity to the C-type lectin superfamily. The enhanced expression of this gene is observed during pancreatic inflammation and liver carcinogenesis. The mature protein also functions as an antimicrobial protein with antibacterial activity. Alternate splicing results in multiple transcript variants that encode the same protein.,REG3A,HIP,HIP/PAP,INGAP,PAP,PAP-H,PAP1,PBCGF,REG-III,REG3,Cancer,Tumor immunology,Tumor-associated antigens,Immunology & Inflammation,REG3A

Molecular Weight: 19 kDa

Gene ID: 5068

UniProt: [Q06141](#)

Application Details

Application Notes: WB,1:500 - 1:2000,IHC,1:50 - 1:200

Restrictions: For Research Use only

Handling

Format: Liquid

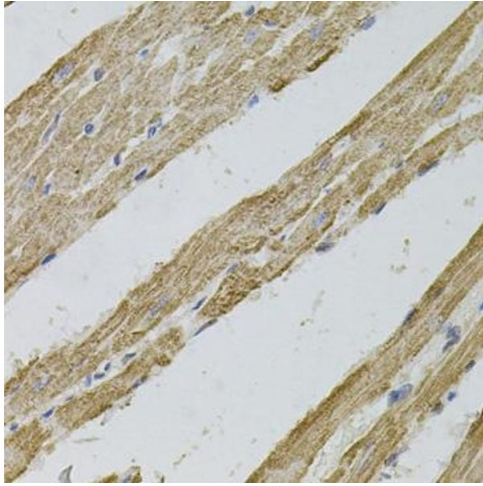
Buffer: PBS with 0.02 % sodium azide,50 % glycerol, pH 7.3.

Preservative: Sodium azide

Precaution of Use: This product contains Sodium azide: a POISONOUS AND HAZARDOUS SUBSTANCE which should be handled by trained staff only.

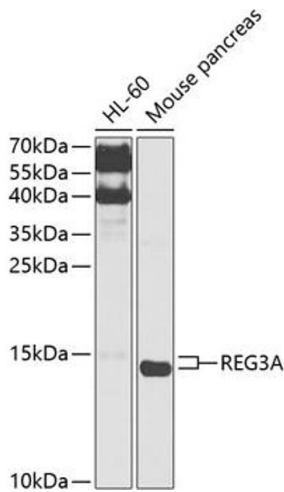
Storage: -20 °C

Storage Comment: Store at -20°C. Avoid freeze / thaw cycles.



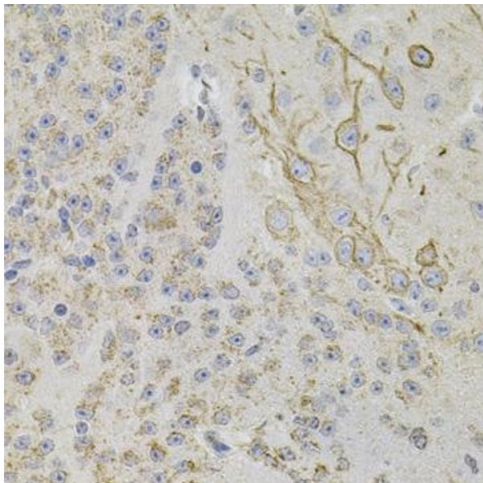
Immunohistochemistry

Image 1. Immunohistochemistry of paraffin-embedded rat heart using REG3A antibody (ABIN6132545, ABIN6146855, ABIN6146856 and ABIN6216122) (40x lens). Perform microwave antigen retrieval with 10 mM PBS buffer pH 7.2 before commencing with IHC staining protocol.



Western Blotting

Image 2. Western blot analysis of extracts of various cell lines, using REG3A antibody (ABIN6132545, ABIN6146855, ABIN6146856 and ABIN6216122) at 1:1000 dilution. Secondary antibody: HRP Goat Anti-Rabbit IgG (H+L) (ABIN1684268 and ABIN3020597) at 1:10000 dilution. Lysates/proteins: 25 µg per lane. Blocking buffer: 3 % nonfat dry milk in TBST. Detection: ECL Basic Kit (RM00020). Exposure time: 30s.



Immunohistochemistry

Image 3. Immunohistochemistry of paraffin-embedded mouse brain using REG3A antibody (ABIN6132545, ABIN6146855, ABIN6146856 and ABIN6216122) (40x lens). Perform microwave antigen retrieval with 10 mM PBS buffer pH 7.2 before commencing with IHC staining protocol.

Please check the [product details page](#) for more images. Overall 4 images are available for ABIN6146855.