



[Go to Product page](#)

Datasheet for ABIN6146873

## anti-Ret Proto-Oncogene antibody (AA 29-300)

### 3 Images

#### Overview

Quantity:	100 µL
Target:	Ret Proto-Oncogene (RET)
Binding Specificity:	AA 29-300
Reactivity:	Human
Host:	Rabbit
Clonality:	Polyclonal
Conjugate:	This Ret Proto-Oncogene antibody is un-conjugated
Application:	Western Blotting (WB), Immunohistochemistry (IHC), Immunofluorescence (IF)

#### Product Details

Immunogen:	Recombinant fusion protein containing a sequence corresponding to amino acids 29-300 of human Ret (NP_066124.1).
Sequence:	LYFSRDAYWE KLYVDQAAGT PLLYVHALRD APEEVPSFRL GQHLYGTYRT RLHENNWICI QEDTGLLYLN RSLDHSSWEK LSVRNRGFPL LTVYLKVFLS PTLREGEQC WPGCARVYFS FFNTSFPACS SLKPRELFCF ETRPSFRIRE NRPPGTFHQF RLLPVQFLCP NISVAYRLLE GEGLPFRCAP DSLEVSTRWA LDREQREKYE LVAVCTVHAG AREEVVMVPF PVTVYDEDDSD APTFPAGVDT ASAVVEFKRK EDTVVATLRV FD
Isotype:	IgG
Cross-Reactivity:	Human, Mouse, Rat
Characteristics:	Polyclonal Antibodies

## Target Details

---

Target:	Ret Proto-Oncogene (RET)
Alternative Name:	RET ( <a href="#">RET Products</a> )
Background:	<p>This gene, a member of the cadherin superfamily, encodes one of the receptor tyrosine kinases, which are cell-surface molecules that transduce signals for cell growth and differentiation. This gene plays a crucial role in neural crest development, and it can undergo oncogenic activation in vivo and in vitro by cytogenetic rearrangement. Mutations in this gene are associated with the disorders multiple endocrine neoplasia, type IIA, multiple endocrine neoplasia, type IIB, Hirschsprung disease, and medullary thyroid carcinoma. Two transcript variants encoding different isoforms have been found for this gene. Additional transcript variants have been described but their biological validity has not been confirmed.</p> <p>RET,CDHF12,CDHR16,HSCR1,MEN2A,MEN2B,MTC1,PTC,RET-ELE1,RET51,Cancer,Signal Transduction,Kinase,Tyrosine kinases,Cell Biology &amp; Developmental Biology,Growth factor,RET</p>
Molecular Weight:	119 kDa/124 kDa
Gene ID:	5979
UniProt:	<a href="#">P07949</a>
Pathways:	<a href="#">RTK Signaling</a> , <a href="#">Dopaminergic Neurogenesis</a> , <a href="#">Regulation of Cell Size</a> , <a href="#">Tube Formation</a>

## Application Details

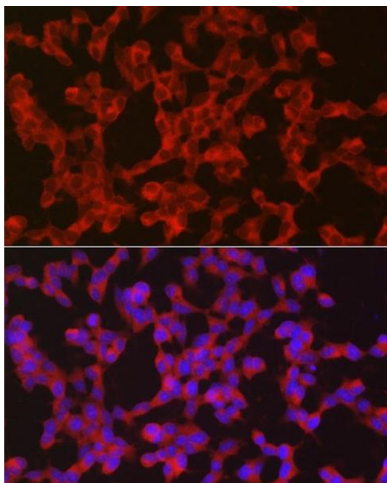
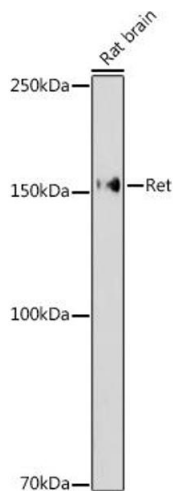
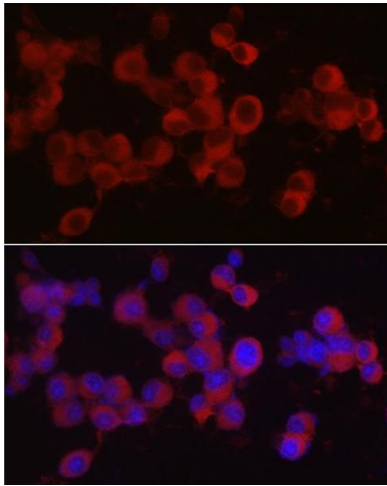
---

Application Notes:	WB,1:500 - 1:2000,IHC,1:50 - 1:200,IF,1:50 - 1:200
Restrictions:	For Research Use only

## Handling

---

Format:	Liquid
Buffer:	PBS with 0.02 % sodium azide,50 % glycerol, pH 7.3.
Preservative:	Sodium azide
Precaution of Use:	This product contains Sodium azide: a POISONOUS AND HAZARDOUS SUBSTANCE which should be handled by trained staff only.
Storage:	-20 °C
Storage Comment:	Store at -20°C. Avoid freeze / thaw cycles.



### Immunofluorescence

**Image 1.** Immunofluorescence analysis of Neuro-2a cells using Ret Rabbit pAb (ABIN6130657, ABIN6146873, ABIN6146874 and ABIN6213585) at dilution of 1:50 (40x lens). Blue: DAPI for nuclear staining.

### Western Blotting

**Image 2.** Western blot analysis of extracts of Rat brain, using Ret antibody (ABIN6130657, ABIN6146873, ABIN6146874 and ABIN6213585) at 1:1000 dilution. Secondary antibody: HRP Goat Anti-Rabbit IgG (H+L) (ABIN1684268 and ABIN3020597) at 1:10000 dilution. Lysates/proteins: 25 µg per lane. Blocking buffer: 3 % nonfat dry milk in TBST. Detection: ECL Enhanced Kit (RM00021). Exposure time: 180s.

### Immunofluorescence

**Image 3.** Immunofluorescence analysis of SH-SY5Y cells using Ret Rabbit pAb (ABIN6130657, ABIN6146873, ABIN6146874 and ABIN6213585) at dilution of 1:50 (40x lens). Blue: DAPI for nuclear staining.