



[Go to Product page](#)

Datasheet for ABIN6146877
anti-REV1 antibody (AA 120-345)

1 Image

Overview

Quantity:	100 µL
Target:	REV1
Binding Specificity:	AA 120-345
Reactivity:	Human
Host:	Rabbit
Clonality:	Polyclonal
Conjugate:	This REV1 antibody is un-conjugated
Application:	Western Blotting (WB)

Product Details

Immunogen:	Recombinant fusion protein containing a sequence corresponding to amino acids 120-345 of human REV1 (NP_057400.1).
Sequence:	AGRLLSYIPY QLYTKQSSVQ KGLSFNPVCR PEDPLPGPSN IAKQLNNRVN HIVKKIETEN EVKVNGMNSW NEEDENNDFS FVDLEQTSPG RKQNGIPHR GSTAIFNGHT PSSNGALKTQ DCLVPMVNSV ASRLSPAFSQ EEDKAEKSST DFRDCTLQQL QQSTRNTDAL RNPVRTNSFS LSPLHSNTKI NGAHHSTVQG PSSTKSTSSV STFSKAAPSV PSKPSD
Isotype:	IgG
Cross-Reactivity:	Human
Characteristics:	Polyclonal Antibodies

Target Details

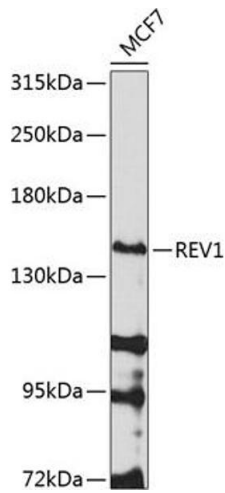
Target:	REV1
Alternative Name:	REV1 (REV1 Products)
Background:	This gene encodes a protein with similarity to the <i>S. cerevisiae</i> mutagenesis protein Rev1. The Rev1 proteins contain a BRCT domain, which is important in protein-protein interactions. A suggested role for the human Rev1-like protein is as a scaffold that recruits DNA polymerases involved in translesion synthesis (TLS) of damaged DNA.,REV1,AIBP80,REV1L,Epigenetics & Nuclear Signaling,DNA Damage & Repair,REV1
Molecular Weight:	43 kDa/138 kDa
Gene ID:	51455
UniProt:	Q9UBZ9
Pathways:	DNA Damage Repair , Regulation of Actin Filament Polymerization , Production of Molecular Mediator of Immune Response

Application Details

Application Notes:	WB,1:500 - 1:2000
Restrictions:	For Research Use only

Handling

Format:	Liquid
Buffer:	PBS with 0.02 % sodium azide,50 % glycerol, pH 7.3.
Preservative:	Sodium azide
Precaution of Use:	This product contains Sodium azide: a POISONOUS AND HAZARDOUS SUBSTANCE which should be handled by trained staff only.
Storage:	-20 °C
Storage Comment:	Store at -20°C. Avoid freeze / thaw cycles.



Western Blotting

Image 1. Western blot analysis of extracts of MCF-7 cells, using REV1 antibody (ABIN6133285, ABIN6146877, ABIN6146878 and ABIN6224574) at 1:1000 dilution. Secondary antibody: HRP Goat Anti-Rabbit IgG (H+L) (ABIN1684268 and ABIN3020597) at 1:10000 dilution. Lysates/proteins: 25 µg per lane. Blocking buffer: 3 % nonfat dry milk in TBST. Detection: ECL Basic Kit (RM00020). Exposure time: 30s.