



[Go to Product page](#)

Datasheet for ABIN6146912  
**anti-RGS10 antibody (AA 1-181)**

1 Image

Overview

Quantity:	100 µL
Target:	RGS10
Binding Specificity:	AA 1-181
Reactivity:	Human
Host:	Rabbit
Clonality:	Polyclonal
Conjugate:	This RGS10 antibody is un-conjugated
Application:	Western Blotting (WB), Immunohistochemistry (IHC)

Product Details

Immunogen:	Recombinant fusion protein containing a sequence corresponding to amino acids 1-181 of human RGS10 (NP_001005339.1).
Sequence:	MFNRAVSRLS RKRPPSDIHD SDGSSSSSHQ SLKSTAKWAA SLENLLEDPE GVKRFREFLK KEFSEENVLF WLACEDFKKM QDKTQMKEKA KEIYMTFLSS KASSQVNV EG QSRLNEKILE EPHPLMFQKL QDQIFNLMKY DSYSRFLKSD LFLKHKRTEE EEEDLPDAQT AAKRASRIYN T
Isotype:	IgG
Cross-Reactivity:	Human, Mouse, Rat
Characteristics:	Polyclonal Antibodies

Target Details

Target:	RGS10
---------	-------

## Target Details

---

Alternative Name:	RGS10 ( <a href="#">RGS10 Products</a> )
Background:	Regulator of G protein signaling (RGS) family members are regulatory molecules that act as GTPase activating proteins (GAPs) for G alpha subunits of heterotrimeric G proteins. RGS proteins are able to deactivate G protein subunits of the Gi alpha, Go alpha and Gq alpha subtypes. They drive G proteins into their inactive GDP-bound forms. Regulator of G protein signaling 10 belongs to this family. All RGS proteins share a conserved 120-amino acid sequence termed the RGS domain. This protein associates specifically with the activated forms of the two related G-protein subunits, G-alpha <sub>i3</sub> and G-alpha <sub>z</sub> but fails to interact with the structurally and functionally distinct G-alpha subunits. Regulator of G protein signaling 10 protein is localized in the nucleus. Two transcript variants encoding different isoforms have been found for this gene.,RGS10,Signal Transduction,G protein signaling,G2/M DNA Damage Checkpoint,RGS10
Molecular Weight:	19 kDa/20 kDa/21 kDa
Gene ID:	6001
UniProt:	<a href="#">O43665</a>
Pathways:	<a href="#">Myometrial Relaxation and Contraction</a> , <a href="#">Regulation of G-Protein Coupled Receptor Protein Signaling</a>

## Application Details

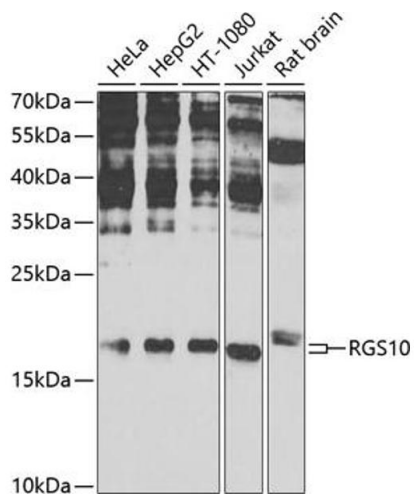
---

Application Notes:	WB,1:500 - 1:2000,IHC,1:50 - 1:200
Comment:	HIGH QUALITY
Restrictions:	For Research Use only

## Handling

---

Format:	Liquid
Buffer:	PBS with 0.02 % sodium azide,50 % glycerol, pH 7.3.
Preservative:	Sodium azide
Precaution of Use:	This product contains Sodium azide: a POISONOUS AND HAZARDOUS SUBSTANCE which should be handled by trained staff only.
Storage:	-20 °C
Storage Comment:	Store at -20°C. Avoid freeze / thaw cycles.



### Western Blotting

**Image 1.** Western blot analysis of extracts of various cell lines, using RGS10 antibody (ABIN6131984, ABIN6146912, ABIN6146913 and ABIN6225281) at 1:1000 dilution. Secondary antibody: HRP Goat Anti-Rabbit IgG (H+L) (ABIN1684268 and ABIN3020597) at 1:10000 dilution. Lysates/proteins: 25 µg per lane. Blocking buffer: 3 % nonfat dry milk in TBST. Detection: ECL Enhanced Kit (RM00021). Exposure time: 60s.