

Datasheet for ABIN6146915
anti-RGS13 antibody (AA 1-159)[Go to Product page](#)

1 Image

Overview

Quantity:	100 µL
Target:	RGS13
Binding Specificity:	AA 1-159
Reactivity:	Human
Host:	Rabbit
Clonality:	Polyclonal
Conjugate:	This RGS13 antibody is un-conjugated
Application:	Western Blotting (WB), Immunohistochemistry (IHC)

Product Details

Immunogen:	Recombinant fusion protein containing a sequence corresponding to amino acids 1-159 of human RGS13 (NP_002918.1).
Sequence:	MSRRNCWICK MCRDESKRPP SNLTLEEVLQ WAQSFENLMA TKYGPVVYAA YLKMEHSDEN IQFWMACETY KKIARWSRI SRAKKLYKIY IQQSPREIN IDSSTRETII RNIQEPETETC FEEAQKIVYM HMERDSYPRF LKSEMYQKLL KTMQSNNSF
Isotype:	IgG
Cross-Reactivity:	Human, Mouse, Rat
Characteristics:	Polyclonal Antibodies

Target Details

Target:	RGS13
---------	-------

Target Details

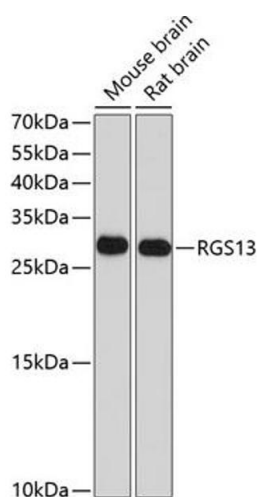
Alternative Name:	RGS13 (RGS13 Products)
Background:	The protein encoded by this gene is a member of the regulator of G protein signaling (RGS) family. RGS family members share similarity with <i>S. cerevisiae</i> SST2 and <i>C. elegans</i> egl-10 proteins, which contain a characteristic conserved RGS domain. RGS proteins accelerate GTPase activity of G protein alpha-subunits, thereby driving G protein into their inactive GDP-bound form, thus negatively regulating G protein signaling. RGS proteins have been implicated in the fine tuning of a variety of cellular events in response to G protein-coupled receptor activation. The biological function of this gene, however, is unknown. Two transcript variants encoding the same isoform exist.,RGS13,Signal Transduction,G protein signaling,G2/M DNA Damage Checkpoint,RGS13
Molecular Weight:	19 kDa
Gene ID:	6003
UniProt:	O14921
Pathways:	Regulation of G-Protein Coupled Receptor Protein Signaling

Application Details

Application Notes:	WB,1:500 - 1:2000,IHC,1:100 - 1:200
Comment:	HIGH QUALITY
Restrictions:	For Research Use only

Handling

Format:	Liquid
Buffer:	PBS with 0.02 % sodium azide,50 % glycerol, pH 7.3.
Preservative:	Sodium azide
Precaution of Use:	This product contains Sodium azide: a POISONOUS AND HAZARDOUS SUBSTANCE which should be handled by trained staff only.
Storage:	-20 °C
Storage Comment:	Store at -20°C. Avoid freeze / thaw cycles.



Western Blotting

Image 1. Western blot analysis of extracts of various cell lines, using RGS13 antibody (ABIN6131953, ABIN6146915, ABIN6146916 and ABIN6214144) at 1:1000 dilution. Secondary antibody: HRP Goat Anti-Rabbit IgG (H+L) (ABIN1684268 and ABIN3020597) at 1:10000 dilution. Lysates/proteins: 25 µg per lane. Blocking buffer: 3 % nonfat dry milk in TBST. Detection: ECL Basic Kit (RM00020). Exposure time: 90s.