



[Go to Product page](#)

Datasheet for ABIN6146920
anti-RGS20 antibody (AA 1-241)

1 Image

Overview

Quantity:	100 µL
Target:	RGS20
Binding Specificity:	AA 1-241
Reactivity:	Human
Host:	Rabbit
Clonality:	Polyclonal
Conjugate:	This RGS20 antibody is un-conjugated
Application:	Western Blotting (WB)

Product Details

Immunogen:	Recombinant fusion protein containing a sequence corresponding to amino acids 1-241 of human RGS20 (NP_003693.2).
Sequence:	MRTADGGGEPA GASSPAGRVD GGLQMGSERM EMRKRQMPAA QDTPGAAPGQ PGAGSRGSNA CCFCWCCCCS CSCLTVRNQE DQRPTIASHE LRADLPTWEE SPAPTLLEEVN AWAQSFDKLM VTPAGRNAFR EFLRTEFSEE NMLFWMACEE LKKEANKNII EEKARIYED YISILSPKEV SLDSRVREVI NRRNMVEPSQH IFDDAQLQIY TLMHRDSYPR FMNSAVYKDL LQSLSEKSIE A
Isotype:	IgG
Cross-Reactivity:	Human, Mouse, Rat
Characteristics:	Polyclonal Antibodies

Target Details

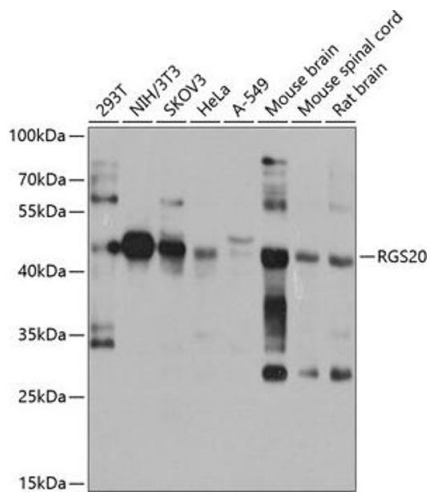
Target:	RGS20
Alternative Name:	RGS20 (RGS20 Products)
Background:	<p>The protein encoded by this gene belongs to the family of regulator of G protein signaling (RGS) proteins, which are regulatory and structural components of G protein-coupled receptor complexes. RGS proteins inhibit signal transduction by increasing the GTPase activity of G protein alpha subunits, thereby driving them into their inactive GDP-bound forms. This protein selectively binds to G(z)-alpha and G(alpha)-i2 subunits, and regulates their signaling activities. Alternatively spliced transcript variants encoding different isoforms have been found for this gene.,RGS20,RGSZ1,ZGAP1,g(z)GAP,gz-GAP,Signal Transduction,G protein signaling,Signal Transduction,G2/M DNA Damage Checkpoint,RGS20</p>
Molecular Weight:	17 kDa/21 kDa/25 kDa/27 kDa/31 kDa/43 kDa
Gene ID:	8601
UniProt:	O76081
Pathways:	Myometrial Relaxation and Contraction , Regulation of G-Protein Coupled Receptor Protein Signaling

Application Details

Application Notes:	WB,1:500 - 1:2000
Comment:	HIGH QUALITY
Restrictions:	For Research Use only

Handling

Format:	Liquid
Buffer:	PBS with 0.02 % sodium azide,50 % glycerol, pH 7.3.
Preservative:	Sodium azide
Precaution of Use:	This product contains Sodium azide: a POISONOUS AND HAZARDOUS SUBSTANCE which should be handled by trained staff only.
Storage:	-20 °C
Storage Comment:	Store at -20°C. Avoid freeze / thaw cycles.



Western Blotting

Image 1. Western blot analysis of extracts of various cell lines, using RGS20 antibody (ABIN6132187, ABIN6146920, ABIN6146921 and ABIN6224191) at 1:1000 dilution. Secondary antibody: HRP Goat Anti-Rabbit IgG (H+L) (ABIN1684268 and ABIN3020597) at 1:10000 dilution. Lysates/proteins: 25 µg per lane. Blocking buffer: 3 % nonfat dry milk in TBST. Detection: ECL Basic Kit (RM00020). Exposure time: 15s.