



[Go to Product page](#)

Datasheet for ABIN6146951
anti-RIN1 antibody (AA 1-280)

1 Image

Overview

Quantity:	100 µL
Target:	RIN1
Binding Specificity:	AA 1-280
Reactivity:	Human
Host:	Rabbit
Clonality:	Polyclonal
Conjugate:	This RIN1 antibody is un-conjugated
Application:	Western Blotting (WB)

Product Details

Immunogen:	Recombinant fusion protein containing a sequence corresponding to amino acids 1-280 of human RIN1 (NP_004283.2).
Sequence:	MESPGESGAG SPGAPSPSSF TTGHLAREKP AQDPLYDVPN ASGGQAGGPQ RPGRVVSRLRE RLLLTRPVWL QLQANAAAAL HMLRTEPPGT FLVRKSNTRQ CQALCMRLPE ASGSPFVSSH YILESPGGVS LEGSELMFPD LVQLICAYCH TRDILLPLQ LPRAIHHAAT HKELEAISHL GIEFWSSSLN IKAQRGPAGG PVLPLKARS PQELDQGTGA ALCCFFNPLFP GDLGPTKREK FKRSFKVRVS TETSSPLSPP AVPPPPVPVL PGAVPSQTER
Isotype:	IgG
Cross-Reactivity:	Mouse, Rat
Characteristics:	Polyclonal Antibodies

Target Details

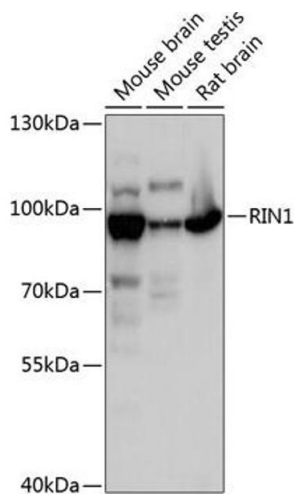
Target:	RIN1
Alternative Name:	RIN1 (RIN1 Products)
Background:	Ras effector protein, which may serve as an inhibitory modulator of neuronal plasticity in aversive memory formation. Can affect Ras signaling at different levels. First, by competing with RAF1 protein for binding to activated Ras. Second, by enhancing signaling from ABL1 and ABL2, which regulate cytoskeletal remodeling. Third, by activating RAB5A, possibly by functioning as a guanine nucleotide exchange factor (GEF for RAB5A, by exchanging bound GDP for free GTP, and facilitating Ras-activated receptor endocytosis.,RIN1,Epigenetics & Nuclear Signaling,Cancer,Tumor suppressors,Signal Transduction,G protein signaling,Signal Transduction,Neuroscience,RIN1
Molecular Weight:	77 kDa/84 kDa
Gene ID:	9610
UniProt:	Q13671

Application Details

Application Notes:	WB,1:500 - 1:2000
Restrictions:	For Research Use only

Handling

Format:	Liquid
Buffer:	PBS with 0.02 % sodium azide,50 % glycerol, pH 7.3.
Preservative:	Sodium azide
Precaution of Use:	This product contains Sodium azide: a POISONOUS AND HAZARDOUS SUBSTANCE which should be handled by trained staff only.
Storage:	-20 °C
Storage Comment:	Store at -20°C. Avoid freeze / thaw cycles.



Western Blotting

Image 1. Western blot analysis of extracts of various cell lines, using RIN1 antibody (ABIN6128671, ABIN6146951, ABIN6146952 and ABIN6217912) at 1:3000 dilution. Secondary antibody: HRP Goat Anti-Rabbit IgG (H+L) (ABIN1684268 and ABIN3020597) at 1:10000 dilution. Lysates/proteins: 25 μ g per lane. Blocking buffer: 3% nonfat dry milk in TBST. Detection: ECL Basic Kit (RM00020). Exposure time: 1s.