

Datasheet for ABIN6146969
anti-RIPK4 antibody (AA 240-520)



[Go to Product page](#)

3 Images

Overview

Quantity:	100 µL
Target:	RIPK4
Binding Specificity:	AA 240-520
Reactivity:	Human
Host:	Rabbit
Clonality:	Polyclonal
Conjugate:	This RIPK4 antibody is un-conjugated
Application:	Immunohistochemistry (IHC), Western Blotting (WB)

Product Details

Immunogen:	Recombinant fusion protein containing a sequence corresponding to amino acids 240-520 of human RIPK4 (NP_065690.2).
Sequence:	HRPELPPVCR ARPRACSHLI RLMQRCWQGD PRVRPTFQEI TSETEDLCEK PDDEVKETAH DLDVKSPPEP RSEVVPARLK RASAPTFDND YLSSELLSQL DSGVSQAVEG PEELSRSSSE SKLPSSGSGK RLSGVSSVDS AFSSRGSLSL SFEREPSTSD LGTTDVQKKK LVDAIVSGDT SKLMKILQPQ DVDLALDSGA SLLHLAVEAG QEECAKWLLL NNANPNLSNR RGSTPLHMAV ERRVRGVVEL LLARKISVNA KDEDQWTALH FAAQNGDESS T
Isotype:	IgG
Cross-Reactivity:	Human, Mouse
Characteristics:	Polyclonal Antibodies

Target Details

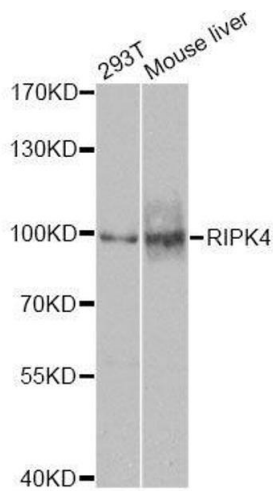
Target:	RIPK4
Alternative Name:	RIPK4 (RIPK4 Products)
Background:	The protein encoded by this gene is a serine/threonine protein kinase that interacts with protein kinase C-delta. The encoded protein can also activate NFkappaB and is required for keratinocyte differentiation. This kinase undergoes autophosphorylation.,RIPK4,ANKK2,ANKRD3,DIK,NKRD3,PKK,PPS2,RIP4,Epigenetics & Nuclear Signaling,Signal Transduction,Kinase,Immunology & Inflammation,NF-kB Signaling Pathway,RIPK4
Molecular Weight:	86 kDa/91 kDa
Gene ID:	54101
UniProt:	P57078

Application Details

Application Notes:	WB,1:500 - 1:2000,IHC,1:100 - 1:200
Comment:	HIGH QUALITY
Restrictions:	For Research Use only

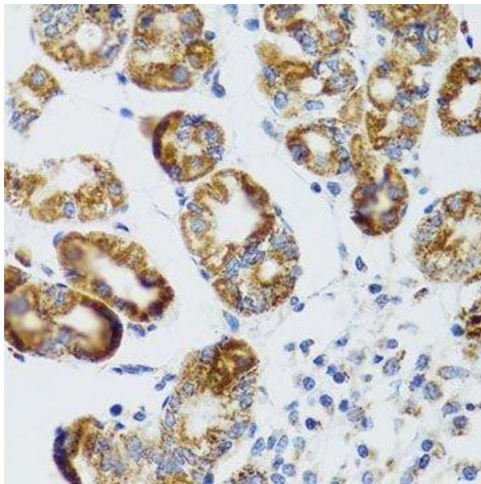
Handling

Format:	Liquid
Buffer:	PBS with 0.02 % sodium azide,50 % glycerol, pH 7.3.
Preservative:	Sodium azide
Precaution of Use:	This product contains Sodium azide: a POISONOUS AND HAZARDOUS SUBSTANCE which should be handled by trained staff only.
Storage:	-20 °C
Storage Comment:	Store at -20°C. Avoid freeze / thaw cycles.



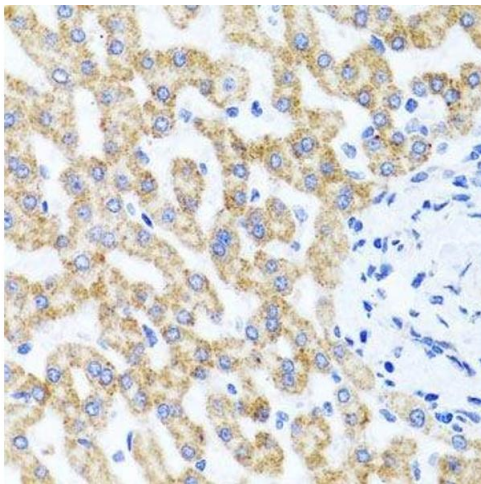
Western Blotting

Image 1. Western blot analysis of extracts of various cell lines, using RIPK4 antibody.



Immunohistochemistry (Paraffin-embedded Sections)

Image 2. Immunohistochemistry of paraffin-embedded human stomach using RIPK4 antibody.



Immunohistochemistry (Paraffin-embedded Sections)

Image 3. Immunohistochemistry of paraffin-embedded human liver injury using RIPK4 antibody.