



[Go to Product page](#)

Datasheet for ABIN6147005  
**anti-RNF123 antibody (AA 1213-1314)**

1 Image

Overview

Quantity:	100 µL
Target:	RNF123
Binding Specificity:	AA 1213-1314
Reactivity:	Human
Host:	Rabbit
Clonality:	Polyclonal
Conjugate:	This RNF123 antibody is un-conjugated
Application:	Western Blotting (WB)

Product Details

Immunogen:	Recombinant fusion protein containing a sequence corresponding to amino acids 1213-1314 of human RNF123 (NP_071347.2).
Isotype:	IgG
Cross-Reactivity:	Human, Mouse
Characteristics:	Polyclonal Antibodies

Target Details

Target:	RNF123
Alternative Name:	RNF123 ( <a href="#">RNF123 Products</a> )
Background:	The protein encoded by this gene contains a C-terminal RING finger domain, a motif present in

## Target Details

---

a variety of functionally distinct proteins and known to be involved in protein-protein and protein-DNA interactions, and an N-terminal SPRY domain. This protein displays E3 ubiquitin ligase activity toward the cyclin-dependent kinase inhibitor 1B which is also known as p27 or KIP1. Alternative splicing results in multiple transcript variants.,RNF123,FP1477,KPC1,RNF123

Molecular Weight: 148 kDa

Gene ID: 63891

UniProt: [Q5XPI4](#)

## Application Details

---

Application Notes: WB,1:500 - 1:2000

Restrictions: For Research Use only

## Handling

---

Format: Liquid

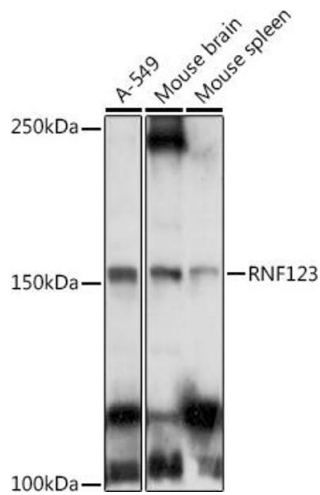
Buffer: PBS with 0.02 % sodium azide,50 % glycerol, pH 7.3.

Preservative: Sodium azide

Precaution of Use: This product contains Sodium azide: a POISONOUS AND HAZARDOUS SUBSTANCE which should be handled by trained staff only.

Storage: -20 °C

Storage Comment: Store at -20°C. Avoid freeze / thaw cycles.



### Western Blotting

**Image 1.** Western blot analysis of extracts of various cell lines, using RNF123 antibody (ABIN6129118, ABIN6147005, ABIN6147006 and ABIN6223534) at 1:1000 dilution. Secondary antibody: HRP Goat Anti-Rabbit IgG (H+L) (ABIN1684268 and ABIN3020597) at 1:10000 dilution. Lysates/proteins: 25 µg per lane. Blocking buffer: 3 % nonfat dry milk in TBST. Detection: ECL Basic Kit (RM00020). Exposure time: 10s.