



[Go to Product page](#)

Datasheet for ABIN6147021

anti-RNF166 antibody (C-Term)

5 Images

1 Publication

Overview

Quantity:	100 µL
Target:	RNF166
Binding Specificity:	C-Term
Reactivity:	Human
Host:	Rabbit
Clonality:	Polyclonal
Conjugate:	This RNF166 antibody is un-conjugated
Application:	Western Blotting (WB), Immunohistochemistry (IHC)

Product Details

Immunogen:	A synthetic peptide corresponding to a sequence within amino acids 100 to the C-terminus of human RNF166 (NP_849163.1).
Sequence:	GCNKKVTLAK MRVHISSCLK VQEQMANCEPK FVPVVPTSQP IPSNIPNRST FACPYCGARN LDQQELVKHC VESHRSDPNR VVCPICSAMP WGDPSYKSAN FLQHLLHRHK FSYDTFVDYS IDEEAAFQAA LALSLESEN
Isotype:	IgG
Cross-Reactivity:	Human, Mouse, Rat
Characteristics:	Polyclonal Antibodies

Target Details

Target:	RNF166
---------	--------

Target Details

Alternative Name: RNF166 ([RNF166 Products](#))

Background: E3 ubiquitin-protein ligase that promotes the ubiquitination of different substrates. In turn, participates in different biological processes including interferon production or autophagy. Plays a role in the activation of RNA virus-induced interferon-beta production by promoting the ubiquitination of TRAF3 and TRAF6. Plays also a role in the early recruitment of autophagy adapters to bacteria. Mediates 'Lys-29' and 'Lys-33'-linked ubiquitination of SQSTM1 leading to xenophagic targeting of bacteria and inhibition of their replication.,RNF166,Cell Biology & Developmental Biology,Ubiquitin,RNF166

Molecular Weight: 14 kDa/17 kDa/26 kDa

Gene ID: 115992

UniProt: [Q96A37](#)

Application Details

Application Notes: WB,1:500 - 1:2000,IHC,1:50 - 1:200

Restrictions: For Research Use only

Handling

Format: Liquid

Buffer: PBS with 0.02 % sodium azide,50 % glycerol, pH 7.3.

Preservative: Sodium azide

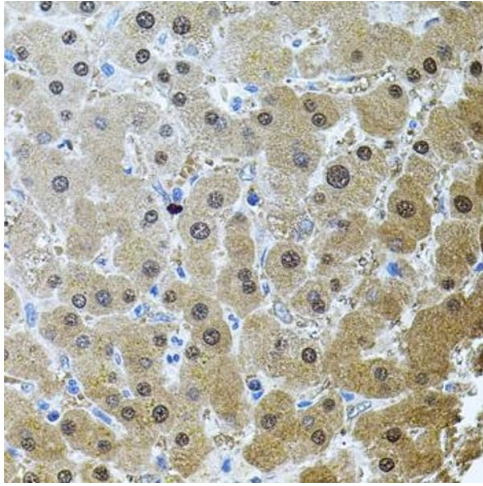
Precaution of Use: This product contains Sodium azide: a POISONOUS AND HAZARDOUS SUBSTANCE which should be handled by trained staff only.

Storage: -20 °C

Storage Comment: Store at -20°C. Avoid freeze / thaw cycles.

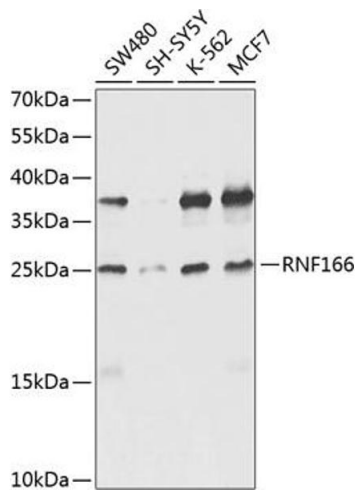
Publications

Product cited in: Fu, Wang, Wan, Lin, Chang, Han: "Wnt5a mediated canonical Wnt signaling pathway activation in orthodontic tooth movement: possible role in the tension force-induced bone formation." in: **Journal of molecular histology**, Vol. 47, Issue 5, pp. 455-66, (2017) ([PubMed](#)).



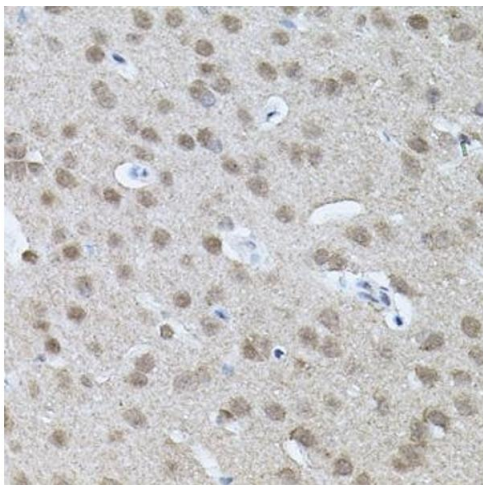
Immunohistochemistry

Image 1. Immunohistochemistry of paraffin-embedded human liver tissue using RNF166 antibody (ABIN6135036, ABIN6147021, ABIN6147024 and ABIN6224290) (40x lens). Perform microwave antigen retrieval with 10 mM PBS buffer pH 7.2 before commencing with IHC staining protocol.



Western Blotting

Image 2. Western blot analysis of extracts of various cell lines, using RNF166 antibody (ABIN6135036, ABIN6147021, ABIN6147024 and ABIN6224290) at 1:1000 dilution. Secondary antibody: HRP Goat Anti-Rabbit IgG (H+L) (ABIN1684268 and ABIN3020597) at 1:10000 dilution. Lysates/proteins: 25 µg per lane. Blocking buffer: 3% nonfat dry milk in TBST. Detection: ECL Enhanced Kit (RM00021). Exposure time: 15s.



Immunohistochemistry

Image 3. Immunohistochemistry of paraffin-embedded mouse brain tissue using RNF166 antibody (ABIN6135036, ABIN6147021, ABIN6147024 and ABIN6224290) (40x lens). Perform microwave antigen retrieval with 10 mM PBS buffer pH 7.2 before commencing with IHC staining protocol.

Please check the [product details page](#) for more images. Overall 5 images are available for ABIN6147021.