



[Go to Product page](#)

Datasheet for ABIN6147086
anti-RPA3 antibody (AA 6-121)

2 Images

Overview

Quantity:	100 µL
Target:	RPA3
Binding Specificity:	AA 6-121
Reactivity:	Human
Host:	Rabbit
Clonality:	Polyclonal
Conjugate:	This RPA3 antibody is un-conjugated
Application:	Western Blotting (WB), Immunofluorescence (IF)

Product Details

Immunogen:	Recombinant fusion protein containing a sequence corresponding to amino acids 6-121 of human RPA3 (NP_002938.1).
Sequence:	DLPRSRINAG MLAQFIDKPV CFVGRLEKIH PTGKMFILSD GEGKNGTIEL MEPLDEEISG IVEVVGRVTA KATILCTSIV QFKEDSHPFD LGLYNEAVKI IHDFPQFYPL GIVQHD
Isotype:	IgG
Cross-Reactivity:	Human, Mouse, Rat
Characteristics:	Polyclonal Antibodies

Target Details

Target:	RPA3
---------	------

Target Details

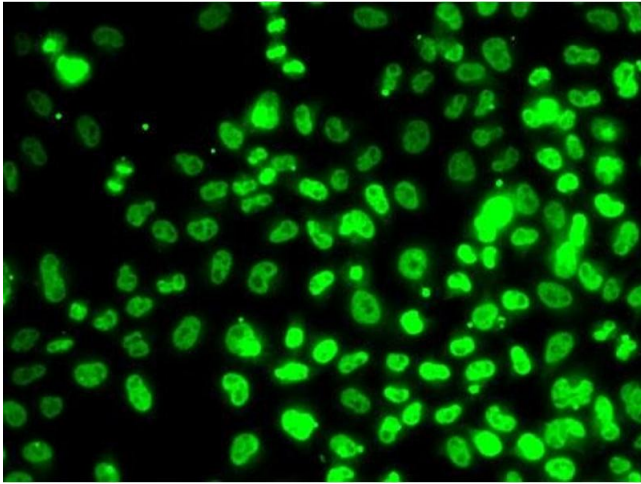
Alternative Name:	RPA3 (RPA3 Products)
Background:	RPA3,REPA3,RP-A p14,RP-Ap14,Epigenetics & Nuclear Signaling,DNA Damage & Repair,RPA3
Molecular Weight:	13 kDa
Gene ID:	6119
UniProt:	P35244
Pathways:	Telomere Maintenance , DNA Damage Repair , Mitotic G1-G1/S Phases , DNA Replication , Synthesis of DNA

Application Details

Application Notes:	WB,1:500 - 1:2000,IF,1:50 - 1:100
Comment:	HIGH QUALITY
Restrictions:	For Research Use only

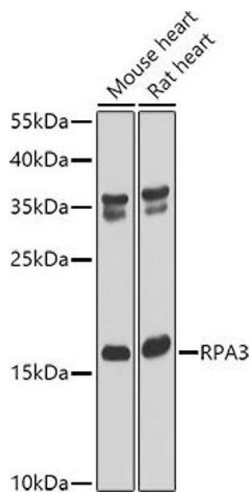
Handling

Format:	Liquid
Buffer:	PBS with 0.02 % sodium azide,50 % glycerol, pH 7.3.
Preservative:	Sodium azide
Precaution of Use:	This product contains Sodium azide: a POISONOUS AND HAZARDOUS SUBSTANCE which should be handled by trained staff only.
Storage:	-20 °C
Storage Comment:	Store at -20°C. Avoid freeze / thaw cycles.



Immunofluorescence

Image 1. Immunofluorescence analysis of MCF7 cells using RP antibody (ABIN6128655, ABIN6147086, ABIN6147088 and ABIN6222439).



Western Blotting

Image 2. Western blot analysis of extracts of various cell lines, using RP antibody (ABIN6128655, ABIN6147086, ABIN6147088 and ABIN6222439) at 1:1000 dilution. Secondary antibody: HRP Goat Anti-Rabbit IgG (H+L) (ABIN1684268 and ABIN3020597) at 1:10000 dilution. Lysates/proteins: 25 µg per lane. Blocking buffer: 3 % nonfat dry milk in TBST. Detection: ECL Basic Kit (RM00020). Exposure time: 60s.