

Datasheet for ABIN6147090
anti-RPE65 antibody (AA 274-533)

3 Images

[Go to Product page](#)

Overview

Quantity:	100 µL
Target:	RPE65
Binding Specificity:	AA 274-533
Reactivity:	Human
Host:	Rabbit
Clonality:	Polyclonal
Conjugate:	This RPE65 antibody is un-conjugated
Application:	Western Blotting (WB), Immunofluorescence (IF)

Product Details

Immunogen:	Recombinant fusion protein containing a sequence corresponding to amino acids 274-533 of human RPE65 (NP_000320.1).
Sequence:	NYMDCFESNE TMGVWLHIAD KKRKKYLNNK YRTSPFNLFH HINTYEDNGF LIVDLCCWKG FEFVYNYLYL ANLRENWEEV KKNARKAPQP EVRRYVLPLN IDKADTGKNL VTLPNNTATA ILCSDETIWL EPEVLFSGPR QAFEFPQINY QKYCGKPYTY AYGLGLNHFV PDRLCKLNVK TKETVWWQEP DSYPPSEPIFV SHPDALEEDD GVLSSVVVSP GAGQKPAYLL ILNAKDLSEV ARAEVEINIP VTFHGLFKKS
Isotype:	IgG
Cross-Reactivity:	Human, Mouse, Rat
Characteristics:	Polyclonal Antibodies

Target Details

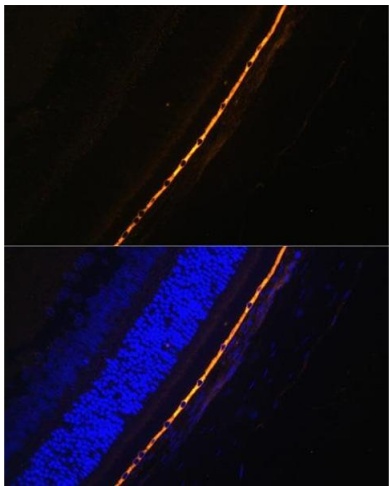
Target:	RPE65
Alternative Name:	RPE65 (RPE65 Products)
Background:	<p>This gene encodes a protein which is located in the retinal pigment epithelium and is involved in the production of 11-cis retinal and in visual pigment regeneration. There are two forms of this protein, a soluble form called sRPE65, and a palmitoylated, membrane-bound form known as mRPE65. mRPE65 serves as the palmitoyl donor for lecithin retinol acyl transferase (LRAT), the enzyme that catalyzes the vitamin A to all trans retinol step of the chromophore regeneration process. Both mRPE65 and sRPE65 also serve as regulatory proteins, with the ratio and concentrations of these molecules playing a role in the inhibition of 11-cis retinal synthesis. Mutations in this gene have been associated with Leber congenital amaurosis type 2 (LCA2) and retinitis pigmentosa.,RPE65,BCO3,LCA2,RP20,mRPE65,rd12,sRPE65,Cancer,Signal Transduction,Endocrine & Metabolism,Neuroscience,Cell Type Marker,RPE65</p>
Molecular Weight:	60 kDa
Gene ID:	6121
UniProt:	Q16518

Application Details

Application Notes:	WB,1:500 - 1:2000,IF,1:50 - 1:200
Comment:	HIGH QUALITY
Restrictions:	For Research Use only

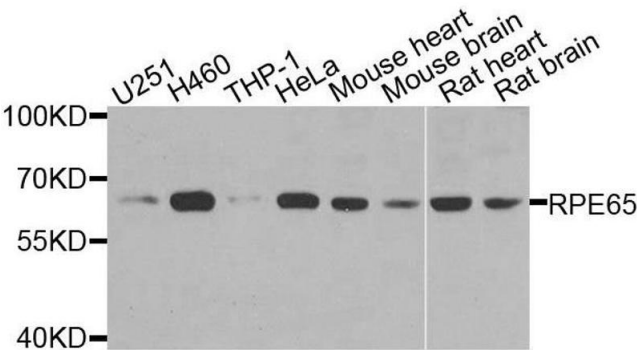
Handling

Format:	Liquid
Buffer:	PBS with 0.02 % sodium azide,50 % glycerol, pH 7.3.
Preservative:	Sodium azide
Precaution of Use:	This product contains Sodium azide: a POISONOUS AND HAZARDOUS SUBSTANCE which should be handled by trained staff only.
Storage:	-20 °C
Storage Comment:	Store at -20°C. Avoid freeze / thaw cycles.



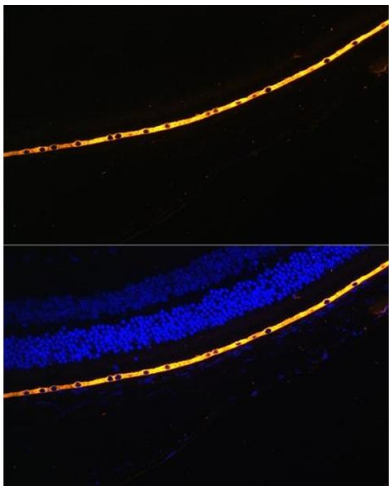
Immunofluorescence

Image 1. Immunofluorescence analysis of Rat eye cells using RPE65 antibody (ABIN6130679, ABIN6147090, ABIN6147091 and ABIN6225161) at dilution of 1:100. Blue: DAPI for nuclear staining.



Western Blotting

Image 2. Western blot analysis of extracts of various cell lines, using RPE65 antibody.



Immunofluorescence

Image 3. Immunofluorescence analysis of Mouse eye cells using RPE65 antibody (ABIN6130679, ABIN6147090, ABIN6147091 and ABIN6225161) at dilution of 1:100. Blue: DAPI for nuclear staining.