

Datasheet for ABIN6147098
anti-RPH3AL antibody (AA 161-315)



[Go to Product page](#)

3 Images

Overview

Quantity:	100 µL
Target:	RPH3AL
Binding Specificity:	AA 161-315
Reactivity:	Human
Host:	Rabbit
Clonality:	Polyclonal
Conjugate:	This RPH3AL antibody is un-conjugated
Application:	Western Blotting (WB), Immunofluorescence (IF)

Product Details

Immunogen:	Recombinant fusion protein containing a sequence corresponding to amino acids 161-315 of human RPH3AL (NP_008918.1).
Sequence:	KYILPLKTPG RADDPHFRPL PTEPAEREPR SSETSRIYTW ARGRVSSDS DSDSDLSSSS LEDRLPSTGV RDRKGDKPWK ESGGSVEAPR MGFTHPPGHL SGCQSSLASG ETGTGSADPP GGPRPGLTRR APVKDTPGRA PAADAAPAGP SSCLG
Isotype:	IgG
Cross-Reactivity:	Human, Mouse
Characteristics:	Polyclonal Antibodies

Target Details

Target:	RPH3AL
---------	--------

Target Details

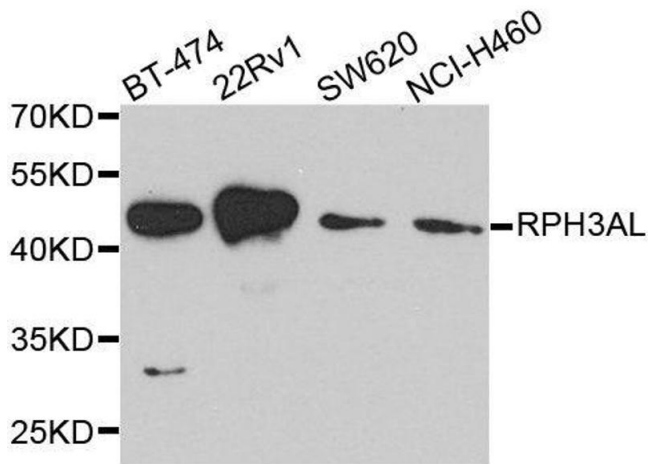
Alternative Name:	RPH3AL (RPH3AL Products)
Background:	The protein encoded by this gene plays a direct regulatory role in calcium-ion-dependent exocytosis in both endocrine and exocrine cells and plays a key role in insulin secretion by pancreatic cells. This gene is likely a tumor suppressor. Alternative splicing results in multiple transcript variants encoding distinct isoforms.,RPH3AL,NOC2,Cancer,Tumor biomarkers,Signal Transduction,G protein signaling,Signal Transduction,RPH3AL
Molecular Weight:	31 kDa/34 kDa
Gene ID:	9501
UniProt:	Q9UNE2
Pathways:	Carbohydrate Homeostasis, Regulation of G-Protein Coupled Receptor Protein Signaling

Application Details

Application Notes:	WB,1:500 - 1:2000,IF,1:50 - 1:200
Comment:	HIGH QUALITY
Restrictions:	For Research Use only

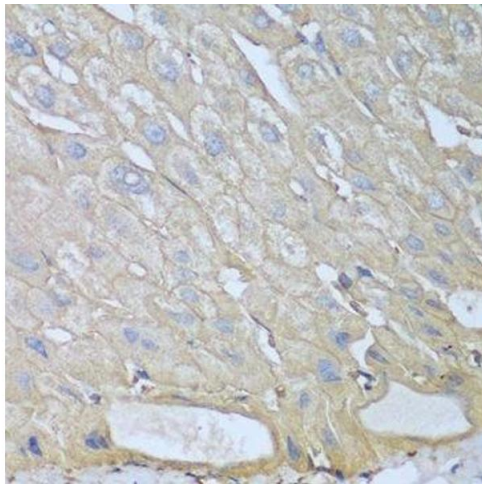
Handling

Format:	Liquid
Buffer:	PBS with 0.02 % sodium azide,50 % glycerol, pH 7.3.
Preservative:	Sodium azide
Precaution of Use:	This product contains Sodium azide: a POISONOUS AND HAZARDOUS SUBSTANCE which should be handled by trained staff only.
Storage:	-20 °C
Storage Comment:	Store at -20°C. Avoid freeze / thaw cycles.



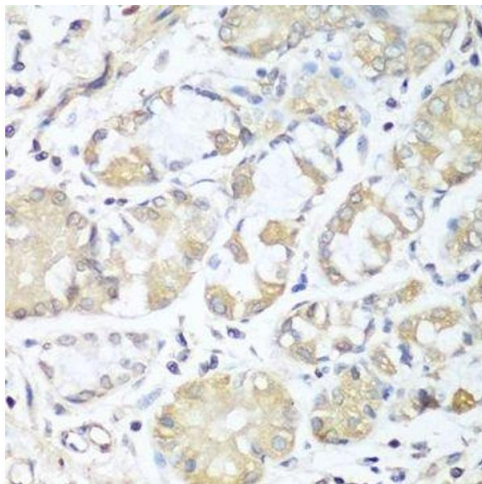
Western Blotting

Image 1. Western blot analysis of extracts of various cell lines, using RPH3AL antibody.



Immunohistochemistry (Paraffin-embedded Sections)

Image 2. Immunohistochemistry of paraffin-embedded human liver using RPH3AL antibody.



Immunohistochemistry (Paraffin-embedded Sections)

Image 3. Immunohistochemistry of paraffin-embedded human stomach using RPH3AL antibody.