

Datasheet for ABIN6147103
anti-RPL10A antibody (AA 1-110)[Go to Product page](#)

4 Images

Overview

Quantity:	100 µL
Target:	RPL10A
Binding Specificity:	AA 1-110
Reactivity:	Human
Host:	Rabbit
Clonality:	Polyclonal
Conjugate:	This RPL10A antibody is un-conjugated
Application:	Western Blotting (WB), Immunohistochemistry (IHC)

Product Details

Immunogen:	Recombinant fusion protein containing a sequence corresponding to amino acids 1-110 of human RPL10A (NP_009035.3).
Sequence:	MSSKVSRTL YEAVREVLHG NQRKRRKFLE TVELQISLKN YDPQKDKRFS GTVRLKSTPR PKFSVCVLGD QQHCDEAKAV DIPHMDIEAL KKLNNKNNKLK KKLAKKYDAF
Isotype:	IgG
Cross-Reactivity:	Human, Mouse, Rat
Characteristics:	Polyclonal Antibodies

Target Details

Target:	RPL10A
---------	--------

Target Details

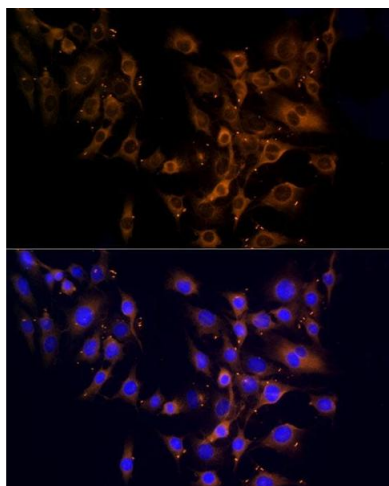
Alternative Name:	RPL10A (RPL10A Products)
Background:	Ribosomes, the organelles that catalyze protein synthesis, consist of a small 40S subunit and a large 60S subunit. Together these subunits are composed of 4 RNA species and approximately 80 structurally distinct proteins. This gene encodes a ribosomal protein that is a component of the 60S subunit. The protein belongs to the L1P family of ribosomal proteins. It is located in the cytoplasm. The expression of this gene is downregulated in the thymus by cyclosporin-A (CsA), an immunosuppressive drug. Studies in mice have shown that the expression of the ribosomal protein L10a gene is downregulated in neural precursor cells during development. This gene previously was referred to as NEDD6 (neural precursor cell expressed, developmentally downregulated 6), but it has been renamed RPL10A (ribosomal protein 10a). As is typical for genes encoding ribosomal proteins, there are multiple processed pseudogenes of this gene dispersed through the genome.,RPL10A,CSA19,Csa-19,L10A,NEDD6,Epigenetics & Nuclear Signaling,RNA Binding,RPL10A
Molecular Weight:	24 kDa
Gene ID:	4736
UniProt:	P62906

Application Details

Application Notes:	WB,1:1000 - 1:2000,IHC,1:50 - 1:200
Comment:	HIGH QUALITY
Restrictions:	For Research Use only

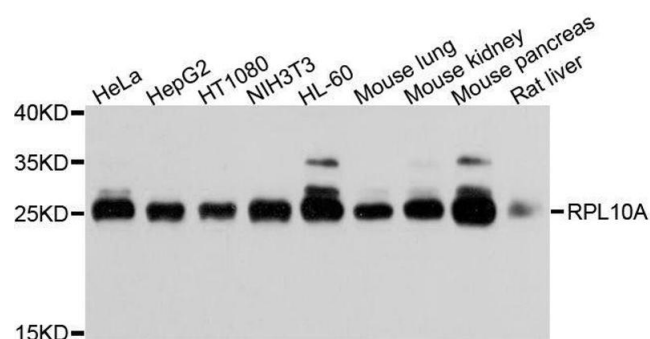
Handling

Format:	Liquid
Buffer:	PBS with 0.02 % sodium azide,50 % glycerol, pH 7.3.
Preservative:	Sodium azide
Precaution of Use:	This product contains Sodium azide: a POISONOUS AND HAZARDOUS SUBSTANCE which should be handled by trained staff only.
Storage:	-20 °C
Storage Comment:	Store at -20°C. Avoid freeze / thaw cycles.



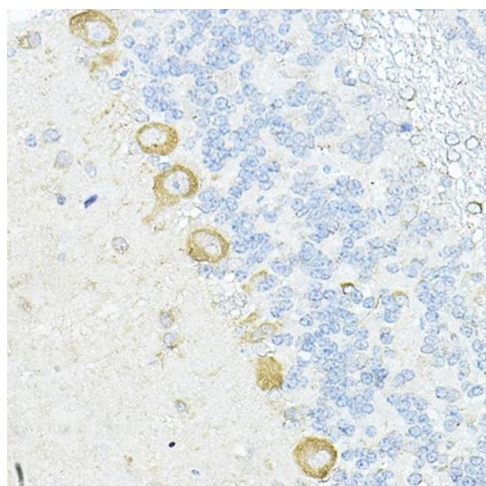
Immunofluorescence

Image 1. Immunofluorescence analysis of C6 cells using RPL10A Rabbit pAb (ABIN6129099, ABIN6147103, ABIN6147104 and ABIN6221624) at dilution of 1:100 (40x lens). Blue: DAPI for nuclear staining.



Western Blotting

Image 2. Western blot analysis of extracts of various cell lines, using RPL10A antibody.



Immunohistochemistry

Image 3. Immunohistochemistry of paraffin-embedded rat cerebellum using RPL10A Rabbit pAb (ABIN6129099, ABIN6147103, ABIN6147104 and ABIN6221624) at dilution of 1:100 (40x lens). Perform high pressure antigen retrieval with 10 mM citrate buffer pH 6.0 before commencing with IHC staining protocol.

Please check the [product details page](#) for more images. Overall 4 images are available for ABIN6147103.