

Datasheet for ABIN6147106
anti-RPL11 antibody (AA 1-177)[Go to Product page](#)

2 Images

Overview

Quantity:	100 µL
Target:	RPL11
Binding Specificity:	AA 1-177
Reactivity:	Human
Host:	Rabbit
Clonality:	Polyclonal
Conjugate:	This RPL11 antibody is un-conjugated
Application:	Western Blotting (WB), Immunofluorescence (IF)

Product Details

Immunogen:	Recombinant fusion protein containing a sequence corresponding to amino acids 1-177 of human RPL11 (NP_001186731.1).
Sequence:	MADQGEKENP MRELRIKLC LNICVGESGD RLTRAAKVLE QLTGQTPVFS KARYTVRSFG IRRNEKIAVH CTVRGAKAEE ILEKGLKVRE YELRKNNFSD TGNFGFGIQE HIDLGIKYDP SIGIYGLDFY VVLGRPGFSI ADKKRRTGCI GAKHRISKEE AMRWFQQKYD GIILPGK
Isotype:	IgG
Cross-Reactivity:	Human, Mouse, Rat
Characteristics:	Polyclonal Antibodies

Target Details

Target:	RPL11
---------	-------

Target Details

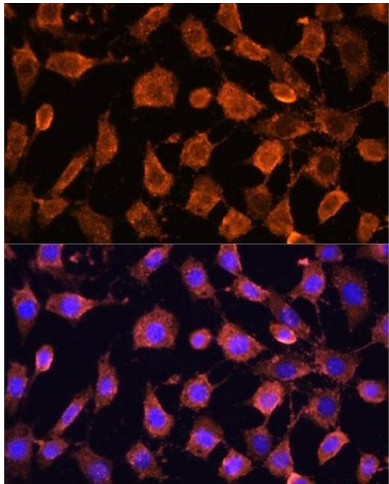
Alternative Name:	RPL11 (RPL11 Products)
Background:	Ribosomes, the organelles that catalyze protein synthesis, consist of a small 40S subunit and a large 60S subunit. Together these subunits are composed of 4 RNA species and approximately 80 structurally distinct proteins. This gene encodes a ribosomal protein that is a component of the 60S subunit. The protein belongs to the L5P family of ribosomal proteins. It is located in the cytoplasm. The protein probably associates with the 5S rRNA. Alternatively spliced transcript variants encoding different isoforms have been found for this gene. As is typical for genes encoding ribosomal proteins, there are multiple processed pseudogenes of this gene dispersed through the genome.,RPL11,DBA7,GIG34,L11,Epigenetics & Nuclear Signaling,Cancer,Tumor suppressors,p53 pathway,Cell Biology & Developmental Biology,Cell Cycle,Cell cycle inhibitors,RPL11
Molecular Weight:	20 kDa
Gene ID:	6135
UniProt:	P62913

Application Details

Application Notes:	WB,1:500 - 1:2000,IF,1:50 - 1:200
Comment:	HIGH QUALITY
Restrictions:	For Research Use only

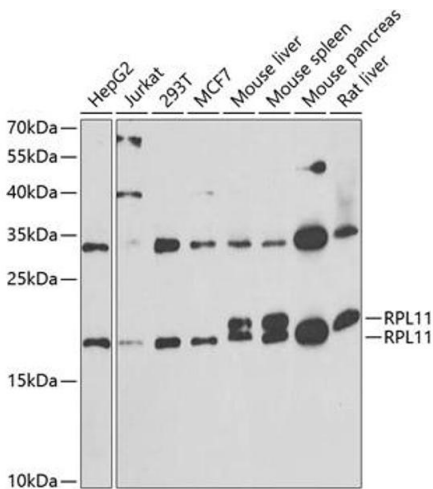
Handling

Format:	Liquid
Buffer:	PBS with 0.02 % sodium azide,50 % glycerol, pH 7.3.
Preservative:	Sodium azide
Precaution of Use:	This product contains Sodium azide: a POISONOUS AND HAZARDOUS SUBSTANCE which should be handled by trained staff only.
Storage:	-20 °C
Storage Comment:	Store at -20°C. Avoid freeze / thaw cycles.



Immunofluorescence

Image 1. Immunofluorescence analysis of L929 cells using RPL11 antibody (ABIN6129101, ABIN6147106, ABIN6147108 and ABIN6222040) at dilution of 1:100. Blue: DAPI for nuclear staining.



Western Blotting

Image 2. Western blot analysis of extracts of various cell lines, using RPL11 antibody (ABIN6129101, ABIN6147106, ABIN6147108 and ABIN6222040) at 1:1000 dilution. Secondary antibody: HRP Goat Anti-Rabbit IgG (H+L) (ABIN1684268 and ABIN3020597) at 1:10000 dilution. Lysates/proteins: 25 µg per lane. Blocking buffer: 3 % nonfat dry milk in TBST. Detection: ECL Basic Kit (RM00020). Exposure time: 90s.