

Datasheet for ABIN6147112
anti-RPL14 antibody (AA 1-215)[Go to Product page](#)

2 Images

Overview

Quantity:	100 µL
Target:	RPL14
Binding Specificity:	AA 1-215
Reactivity:	Human
Host:	Rabbit
Clonality:	Polyclonal
Conjugate:	This RPL14 antibody is un-conjugated
Application:	Western Blotting (WB), Immunofluorescence (IF)

Product Details

Immunogen:	Recombinant fusion protein containing a sequence corresponding to amino acids 1-215 of human RPL14 (NP_003964.3).
Sequence:	MVFRRFVEVG RVAYVSFGPH AGKLVAIVDV IDQNRALVDG PCTQVRRQAM PFKCMQLTDF ILKFPNSAHQ KYVRQAWQKA DINTKWAATR WAKKIEARER KAKMTDFDRF KVMKAKKMRN RIIKNEVKKL QKAALLKASP KKAPGTKGTA AAAAAAAAAAK VPAKKITAAS KKAPAQKVPA QKATGQKAAP APKAQKGQKA PAQKAPAPKA SGKKA
Isotype:	IgG
Cross-Reactivity:	Human, Mouse, Rat
Characteristics:	Polyclonal Antibodies

Target Details

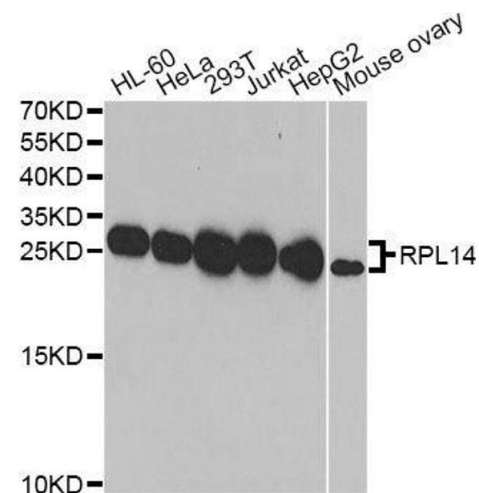
Target:	RPL14
Alternative Name:	RPL14 (RPL14 Products)
Background:	Ribosomes, the organelles that catalyze protein synthesis, consist of a small 40S subunit and a large 60S subunit. Together these subunits are composed of 4 RNA species and approximately 80 structurally distinct proteins. This gene encodes a ribosomal protein that is a component of the 60S subunit. The protein belongs to the L14E family of ribosomal proteins. It contains a basic region-leucine zipper (bZIP)-like domain. The protein is located in the cytoplasm. This gene contains a trinucleotide (GCT) repeat tract whose length is highly polymorphic, these triplet repeats result in a stretch of alanine residues in the encoded protein. Transcript variants utilizing alternative polyA signals and alternative 5'-terminal exons exist but all encode the same protein. As is typical for genes encoding ribosomal proteins, there are multiple processed pseudogenes of this gene dispersed through the genome.,RPL14,CAG-ISL-7,CTG-B33,L14,RL14,hRL14,Epigenetics & Nuclear Signaling,RNA Binding,RPL14
Molecular Weight:	23 kDa
Gene ID:	9045
UniProt:	P50914

Application Details

Application Notes:	WB,1:500 - 1:2000,IF,1:50 - 1:200
Comment:	HIGH QUALITY
Restrictions:	For Research Use only

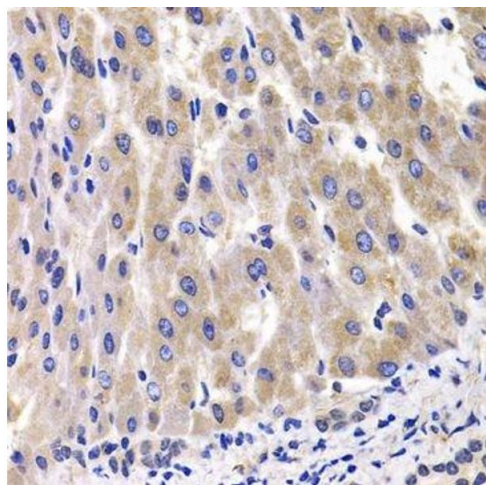
Handling

Format:	Liquid
Buffer:	PBS with 0.02 % sodium azide,50 % glycerol, pH 7.3.
Preservative:	Sodium azide
Precaution of Use:	This product contains Sodium azide: a POISONOUS AND HAZARDOUS SUBSTANCE which should be handled by trained staff only.
Storage:	-20 °C
Storage Comment:	Store at -20°C. Avoid freeze / thaw cycles.



Western Blotting

Image 1. Western blot analysis of extracts of various cell lines, using RPL14 antibody.



Immunohistochemistry (Paraffin-embedded Sections)

Image 2. Immunohistochemistry of paraffin-embedded rat liver using RPL14 antibody.