



[Go to Product page](#)

Datasheet for ABIN6147115
anti-RPL17 antibody (AA 1-184)

7 Images

Overview

Quantity:	100 µL
Target:	RPL17
Binding Specificity:	AA 1-184
Reactivity:	Human
Host:	Rabbit
Clonality:	Polyclonal
Conjugate:	This RPL17 antibody is un-conjugated
Application:	Western Blotting (WB), Immunohistochemistry (IHC), Immunofluorescence (IF)

Product Details

Immunogen:	Recombinant fusion protein containing a sequence corresponding to amino acids 1-184 of human RPL17 (NP_000976.1).
Sequence:	MVRYSLDPEN PTKSCKSRGS NLRVHFKNTR ETAQAIGMH IRKATKYLKD VTLQKQCVPF RRYNGGVGRC AQAKQWGWTQ GRWPKKSAEF LLHMLKNAES NAELKGLDVD SLVIEHIQVN KAPKMRRRTY RAHGRINPYM SSPCHIEMIL TEKEQIVPKP EEEVAQKKKI SQKLLKKQKL MARE
Isotype:	IgG
Cross-Reactivity:	Human, Mouse, Rat
Characteristics:	Polyclonal Antibodies

Target Details

Target:	RPL17
---------	-------

Target Details

Alternative Name:	RPL17 (RPL17 Products)
Background:	<p>Ribosomes, the organelles that catalyze protein synthesis, consist of a small 40S subunit and a large 60S subunit. Together these subunits are composed of 4 RNA species and approximately 80 structurally distinct proteins. This gene encodes a ribosomal protein that is a component of the 60S subunit. The protein belongs to the L22P family of ribosomal proteins. It is located in the cytoplasm. This gene has been referred to as rpl23 because the encoded protein shares amino acid identity with ribosomal protein L23 from <i>Halobacterium marismortui</i>, however, its official symbol is RPL17. As is typical for genes encoding ribosomal proteins, there are multiple processed pseudogenes of this gene dispersed through the genome. Alternative splicing results in multiple transcript variants. Read-through transcription also exists between this gene and the neighboring downstream C18orf32 (chromosome 18 open reading frame 32) gene.,RPL17,L17,PD-1,RPL23,Epigenetics & Nuclear Signaling,RNA Binding,RPL17</p>

Molecular Weight:	17 kDa/21 kDa/26 kDa
-------------------	----------------------

Gene ID:	6139
----------	------

UniProt:	P18621
----------	------------------------

Application Details

Application Notes:	WB,1:200 - 1:2000,IHC,1:50 - 1:200,IF,1:50 - 1:200
--------------------	--

Comment:	HIGH QUALITY
----------	--------------

Restrictions:	For Research Use only
---------------	-----------------------

Handling

Format:	Liquid
---------	--------

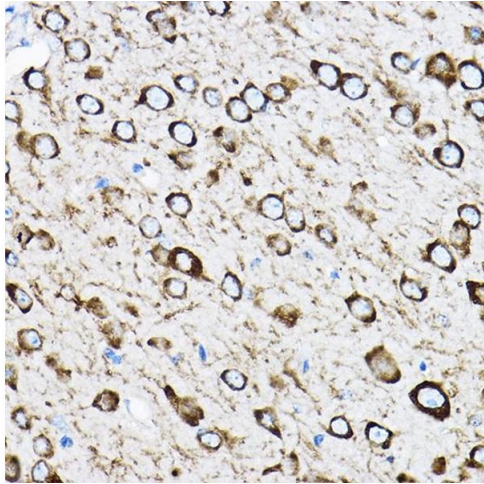
Buffer:	PBS with 0.02 % sodium azide,50 % glycerol, pH 7.3.
---------	---

Preservative:	Sodium azide
---------------	--------------

Precaution of Use:	This product contains Sodium azide: a POISONOUS AND HAZARDOUS SUBSTANCE which should be handled by trained staff only.
--------------------	--

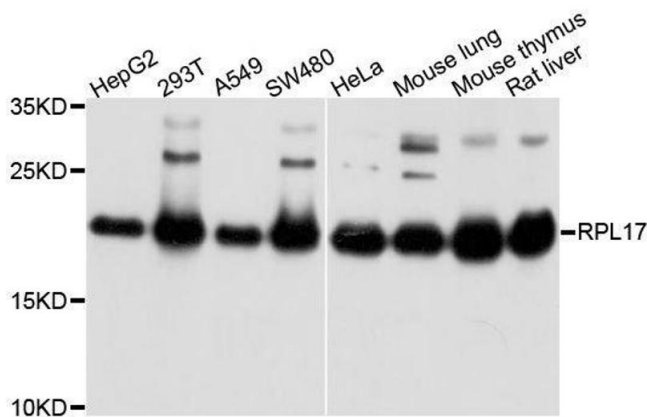
Storage:	-20 °C
----------	--------

Storage Comment:	Store at -20°C. Avoid freeze / thaw cycles.
------------------	---



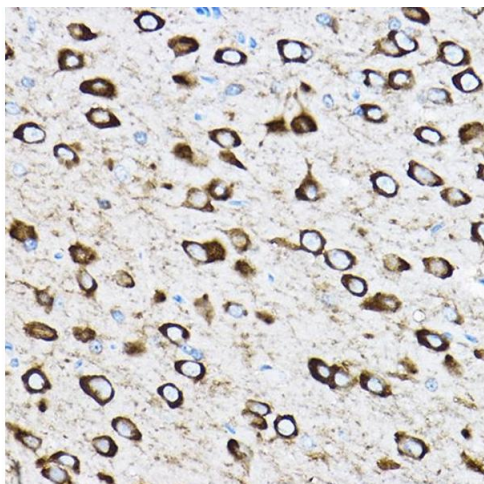
Immunohistochemistry

Image 1. Immunohistochemistry of paraffin-embedded mouse brain using RPL17 Rabbit pAb (ABIN6128342, ABIN6147115, ABIN6147116 and ABIN6221632) at dilution of 1:100 (40x lens). Perform high pressure antigen retrieval with 10 mM citrate buffer pH 6.0 before commencing with IHC staining protocol.



Western Blotting

Image 2. Western blot analysis of extracts of various cell lines, using RPL17 antibody.



Immunohistochemistry

Image 3. Immunohistochemistry of paraffin-embedded rat brain using RPL17 Rabbit pAb (ABIN6128342, ABIN6147115, ABIN6147116 and ABIN6221632) at dilution of 1:100 (40x lens). Perform high pressure antigen retrieval with 10 mM citrate buffer pH 6.0 before commencing with IHC staining protocol.

Please check the [product details page](#) for more images. Overall 7 images are available for ABIN6147115.