



[Go to Product page](#)

Datasheet for ABIN6147119  
**anti-RPL22 antibody (AA 1-122)**

3 Images

Overview

Quantity:	100 µL
Target:	RPL22
Binding Specificity:	AA 1-122
Reactivity:	Human
Host:	Rabbit
Clonality:	Polyclonal
Conjugate:	This RPL22 antibody is un-conjugated
Application:	Western Blotting (WB), Immunohistochemistry (IHC), Immunofluorescence (IF)

Product Details

Immunogen:	Recombinant fusion protein containing a sequence corresponding to amino acids 1-122 of human RPL22 (NP_000974.1).
Sequence:	MAPVKKLVVK GGKKKKQVLK FTLDCVHPVE DGIMDAANFE QFLQERIKVN GKAGNLGGGV VTIERSKSKI TVTSEVPFSK RYLKYLTKKY LKKNLNRDWL RRVANSKESY ELRYFQINQD EE
Isotype:	IgG
Cross-Reactivity:	Human, Mouse, Rat
Characteristics:	Polyclonal Antibodies

Target Details

Target:	RPL22
---------	-------

## Target Details

---

Alternative Name: RPL22 ([RPL22 Products](#))

---

Background: Ribosomes, the organelles that catalyze protein synthesis, consist of a small 40S subunit and a large 60S subunit. Together these subunits are composed of 4 RNA species and approximately 80 structurally distinct proteins. This gene encodes a cytoplasmic ribosomal protein that is a component of the 60S subunit. The protein belongs to the L22E family of ribosomal proteins. Its initiating methionine residue is post-translationally removed. The protein can bind specifically to Epstein-Barr virus-encoded RNAs (EBERs) 1 and 2. The mouse protein has been shown to be capable of binding to heparin. Transcript variants utilizing alternative polyA signals exist. As is typical for genes encoding ribosomal proteins, there are multiple processed pseudogenes of this gene dispersed through the genome. It was previously thought that this gene mapped to 3q26 and that it was fused to the acute myeloid leukemia 1 (AML1) gene located at 21q22 in some therapy-related myelodysplastic syndrome patients with 3,21 translocations, however, these fusions actually involve a ribosomal protein L22 pseudogene located at 3q26, and this gene actually maps to 1p36.3-p36.2.,RPL22,EAP,HBP15,HBP15/L22,L22,Epigenetics & Nuclear Signaling,RNA Binding,RPL22

---

Molecular Weight: 14 kDa

---

Gene ID: 6146

---

UniProt: [P35268](#)

---

## Application Details

---

Application Notes: WB,1:500 - 1:3000,IHC,1:50 - 1:100,IF,1:50 - 1:100

---

Comment: HIGH QUALITY

---

Restrictions: For Research Use only

---

## Handling

---

Format: Liquid

---

Buffer: PBS with 0.02 % sodium azide,50 % glycerol, pH 7.3.

---

Preservative: Sodium azide

---

Precaution of Use: This product contains Sodium azide: a POISONOUS AND HAZARDOUS SUBSTANCE which should be handled by trained staff only.

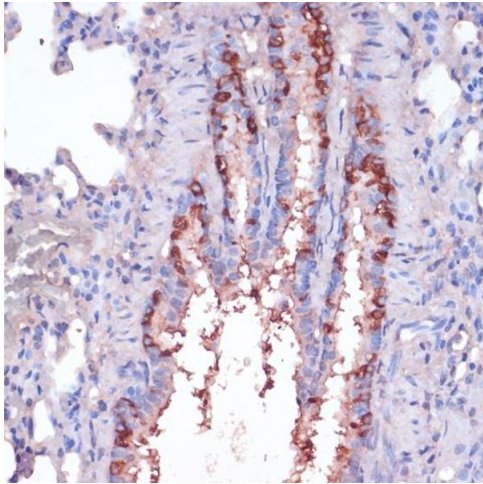
---

Storage: -20 °C

---

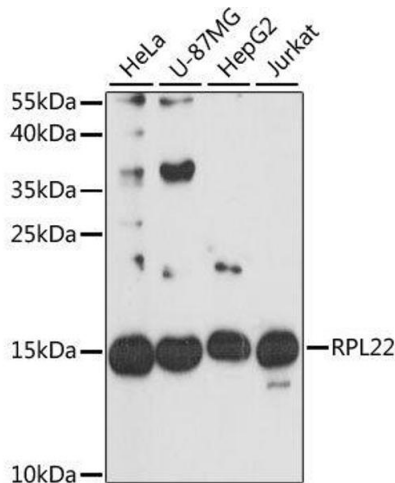
Storage Comment: Store at -20°C. Avoid freeze / thaw cycles.

Images



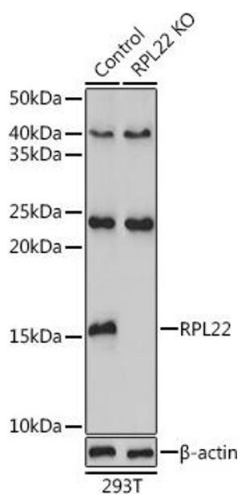
**Immunohistochemistry**

**Image 1.** Immunohistochemistry of paraffin-embedded rat lung using RPL22 antibody (ABIN6128682, ABIN6147119, ABIN6147120 and ABIN6224925) at dilution of 1:100 (40x lens). Perform microwave antigen retrieval with 10 mM PBS buffer pH 7.2 before commencing with IHC staining protocol.



**Western Blotting**

**Image 2.** Western blot analysis of extracts of various cell lines, using RPL22 antibody.



**Western Blotting**

**Image 3.** Western blot analysis of extracts from normal (control) and RPL22 knockout (KO) 293T cells, using RPL22 antibody (ABIN6128682, ABIN6147119, ABIN6147120 and ABIN6224925) at 1:3000 dilution. Secondary antibody: HRP Goat Anti-Rabbit IgG (H+L) (ABIN1684268 and ABIN3020597) at 1:10000 dilution. Lysates/proteins: 25 µg per lane. Blocking buffer: 3% nonfat dry milk in TBST. Detection: ECL Basic Kit (RM00020). Exposure time: 180s.