



[Go to Product page](#)

Datasheet for ABIN6147127
anti-RPL27 antibody (AA 1-136)

5 Images

Overview

Quantity:	100 µL
Target:	RPL27
Binding Specificity:	AA 1-136
Reactivity:	Human
Host:	Rabbit
Clonality:	Polyclonal
Conjugate:	This RPL27 antibody is un-conjugated
Application:	Western Blotting (WB), Immunohistochemistry (IHC), Immunofluorescence (IF)

Product Details

Immunogen:	Recombinant fusion protein containing a sequence corresponding to amino acids 1-136 of human RPL27 (NP_000979.1).
Sequence:	MGKFMKPGKV VLVLGRYSR RKAIVVKNID DGTSDRPYSH ALVAGIDRYP RKVTAAMGKK KIAKRSKIKS FVKVYNYNHL MPTRYSDIP LDKTVVNKDV FRDPALKRKA RREAKVKFEE RYKTGKNKWF FQKLRF
Isotype:	IgG
Cross-Reactivity:	Human, Mouse, Rat
Characteristics:	Polyclonal Antibodies

Target Details

Target:	RPL27
---------	-------

Target Details

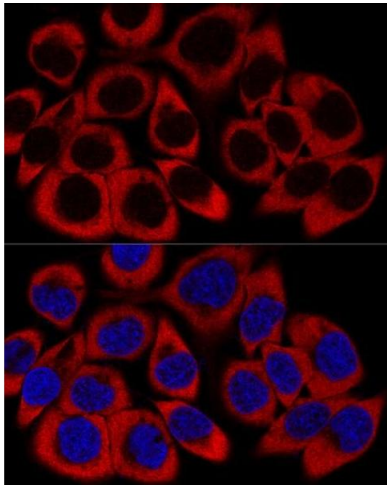
Alternative Name:	RPL27 (RPL27 Products)
Background:	Ribosomes, the organelles that catalyze protein synthesis, consist of a small 40S subunit and a large 60S subunit. Together these subunits are composed of 4 RNA species and approximately 80 structurally distinct proteins. This gene encodes a ribosomal protein that is a component of the 60S subunit. The protein belongs to the L27E family of ribosomal proteins. It is located in the cytoplasm. As is typical for genes encoding ribosomal proteins, there are multiple processed pseudogenes of this gene dispersed through the genome.,RPL27,L27,Epigenetics & Nuclear Signaling,RNA Binding,RPL27
Molecular Weight:	15 kDa
Gene ID:	6155
UniProt:	P61353

Application Details

Application Notes:	WB,1:500 - 1:2000,IHC,1:50 - 1:100,IF,1:50 - 1:100
Comment:	HIGH QUALITY
Restrictions:	For Research Use only

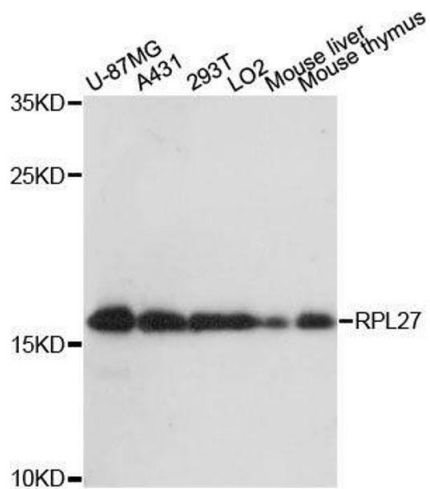
Handling

Format:	Liquid
Buffer:	PBS with 0.02 % sodium azide,50 % glycerol, pH 7.3.
Preservative:	Sodium azide
Precaution of Use:	This product contains Sodium azide: a POISONOUS AND HAZARDOUS SUBSTANCE which should be handled by trained staff only.
Storage:	-20 °C
Storage Comment:	Store at -20°C. Avoid freeze / thaw cycles.



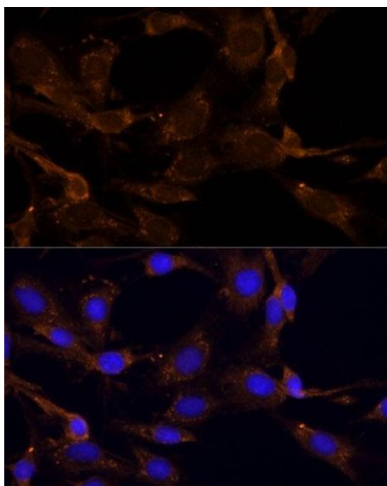
Immunofluorescence

Image 1. Confocal immunofluorescence analysis of HeLa cells using RPL27 Polyclonal Antibody (ABIN6133040, ABIN6147127, ABIN6147128 and ABIN6216885) at dilution of 1:200. Blue: DAPI for nuclear staining.



Western Blotting

Image 2. Western blot analysis of extracts of various cell lines, using RPL27 antibody.



Immunofluorescence

Image 3. Immunofluorescence analysis of C6 cells using RPL27 Polyclonal Antibody (ABIN6133040, ABIN6147127, ABIN6147128 and ABIN6216885) at dilution of 1:100 (40x lens). Blue: DAPI for nuclear staining.

Please check the [product details page](#) for more images. Overall 5 images are available for ABIN6147127.