

Datasheet for ABIN6147132
anti-RPL3 antibody (AA 1-260)[Go to Product page](#)

1 Image

Overview

Quantity:	100 µL
Target:	RPL3
Binding Specificity:	AA 1-260
Reactivity:	Human
Host:	Rabbit
Clonality:	Polyclonal
Conjugate:	This RPL3 antibody is un-conjugated
Application:	Western Blotting (WB)

Product Details

Immunogen:	Recombinant fusion protein containing a sequence corresponding to amino acids 1-260 of human RPL3 (NP_000958.1).
Sequence:	MSHRKFSAPR HGSLGFLPRK RSSRHRGKVK SFPKDDPSKP VHLTAFLGYK AGMTHIVREV DRPGSKVNKK EVVEAVTIVE TPPMVVVGIV GYVETPRGLR TFKTVFAEHI SDECKRRFYK NWHKSKKKAF TKYCKKWQDE DGKKQLEKDF SSMKKYCQVI RVIAHTQMRL LPLRQKKAHL MEIQVNGGTV AEKLDWARER LEQQVPVNQV FGQDEMIDVI GVTKGKGYKG VTSRWHTKKL PRKTHRGLRK VACIGAWHPA
Isotype:	IgG
Cross-Reactivity:	Human, Mouse
Characteristics:	Polyclonal Antibodies

Target Details

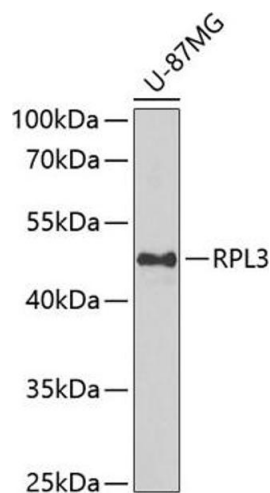
Target:	RPL3
Alternative Name:	RPL3 (RPL3 Products)
Background:	Ribosomes, the complexes that catalyze protein synthesis, consist of a small 40S subunit and a large 60S subunit. Together these subunits are composed of 4 RNA species and approximately 80 structurally distinct proteins. This gene encodes a ribosomal protein that is a component of the 60S subunit. The protein belongs to the L3P family of ribosomal proteins and it is located in the cytoplasm. The protein can bind to the HIV-1 TAR mRNA, and it has been suggested that the protein contributes to tat-mediated transactivation. This gene is co-transcribed with several small nucleolar RNA genes, which are located in several of this gene's introns. Alternate transcriptional splice variants, encoding different isoforms, have been characterized. As is typical for genes encoding ribosomal proteins, there are multiple processed pseudogenes of this gene dispersed through the genome.,RPL3,ASC-1,L3,TARBP-B,Epigenetics & Nuclear Signaling,RNA Binding,Immunology & Inflammation,RPL3
Molecular Weight:	46 kDa
Gene ID:	6122
UniProt:	P39023

Application Details

Application Notes:	WB,1:500 - 1:2000
Comment:	HIGH QUALITY
Restrictions:	For Research Use only

Handling

Format:	Liquid
Buffer:	PBS with 0.02 % sodium azide,50 % glycerol, pH 7.3.
Preservative:	Sodium azide
Precaution of Use:	This product contains Sodium azide: a POISONOUS AND HAZARDOUS SUBSTANCE which should be handled by trained staff only.
Storage:	-20 °C
Storage Comment:	Store at -20°C. Avoid freeze / thaw cycles.



Western Blotting

Image 1. Western blot analysis of extracts of U-87MG cells, using RPL3 antibody (ABIN6128684, ABIN6147132, ABIN6147134 and ABIN6222730) at 1:1000 dilution. Secondary antibody: HRP Goat Anti-Rabbit IgG (H+L) (ABIN1684268 and ABIN3020597) at 1:10000 dilution. Lysates/proteins: 25 µg per lane. Blocking buffer: 3 % nonfat dry milk in TBST. Detection: ECL Basic Kit (RM00020). Exposure time: 90s.