

Datasheet for ABIN6147135
anti-RPL30 antibody (AA 1-115)[Go to Product page](#)

4 Images

Overview

Quantity:	100 µL
Target:	RPL30
Binding Specificity:	AA 1-115
Reactivity:	Human
Host:	Rabbit
Clonality:	Polyclonal
Conjugate:	This RPL30 antibody is un-conjugated
Application:	Western Blotting (WB), Immunohistochemistry (IHC), Immunofluorescence (IF)

Product Details

Immunogen:	Recombinant fusion protein containing a sequence corresponding to amino acids 1-115 of human RPL30 (NP_000980.1).
Sequence:	MVAAKKTkKS LESINSRLQL VMKSGKYVLG YKQTLKMIRQ GKAKLVILAN NCPALRKSEI EYYAMLAKTG VHHYSGNNIE LGTACGKYR VCTLAIDPG DSDIIRSMPE QTGEK
Isotype:	IgG
Cross-Reactivity:	Human, Mouse, Rat
Characteristics:	Polyclonal Antibodies

Target Details

Target:	RPL30
---------	-------

Target Details

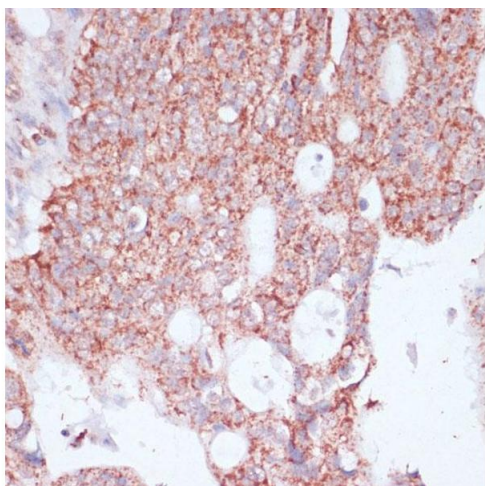
Alternative Name:	RPL30 (RPL30 Products)
Background:	Ribosomes, the organelles that catalyze protein synthesis, consist of a small 40S subunit and a large 60S subunit. Together these subunits are composed of 4 RNA species and approximately 80 structurally distinct proteins. This gene encodes a ribosomal protein that is a component of the 60S subunit. The protein belongs to the L30E family of ribosomal proteins. It is located in the cytoplasm. This gene is co-transcribed with the U72 small nucleolar RNA gene, which is located in its fourth intron. As is typical for genes encoding ribosomal proteins, there are multiple processed pseudogenes of this gene dispersed through the genome.,RPL30,L30,Epigenetics & Nuclear Signaling,RNA Binding,RPL30
Molecular Weight:	12 kDa
Gene ID:	6156
UniProt:	P62888

Application Details

Application Notes:	WB,1:500 - 1:2000,IHC,1:50 - 1:100,IF,1:50 - 1:100
Restrictions:	For Research Use only

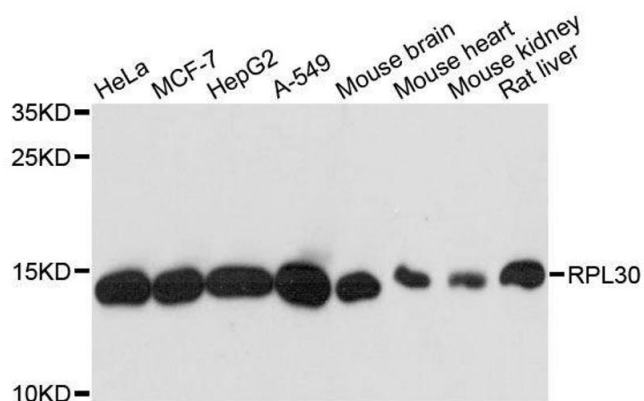
Handling

Format:	Liquid
Buffer:	PBS with 0.02 % sodium azide,50 % glycerol, pH 7.3.
Preservative:	Sodium azide
Precaution of Use:	This product contains Sodium azide: a POISONOUS AND HAZARDOUS SUBSTANCE which should be handled by trained staff only.
Storage:	-20 °C
Storage Comment:	Store at -20°C. Avoid freeze / thaw cycles.



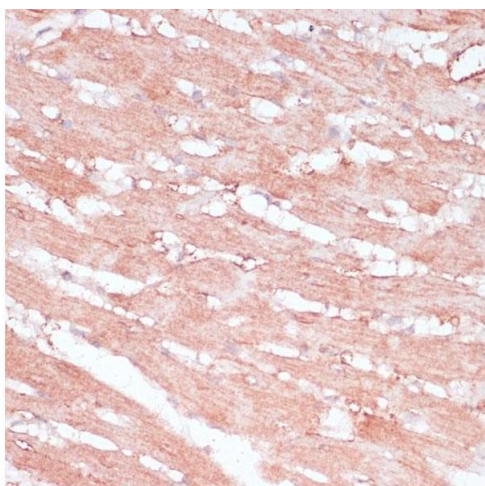
Immunohistochemistry

Image 1. Immunohistochemistry of paraffin-embedded human colon carcinoma using RPL30 antibody (ABIN6130903, ABIN6147135, ABIN6147136 and ABIN6217777) at dilution of 1:100 (40x lens). Perform microwave antigen retrieval with 10 mM PBS buffer pH 7.2 before commencing with IHC staining protocol.



Western Blotting

Image 2. Western blot analysis of extracts of various cell lines, using RPL30 antibody.



Immunohistochemistry

Image 3. Immunohistochemistry of paraffin-embedded rat heart using RPL30 antibody (ABIN6130903, ABIN6147135, ABIN6147136 and ABIN6217777) at dilution of 1:100 (40x lens). Perform microwave antigen retrieval with 10 mM PBS buffer pH 7.2 before commencing with IHC staining protocol.

Please check the [product details page](#) for more images. Overall 4 images are available for ABIN6147135.