



[Go to Product page](#)

Datasheet for ABIN6147138
anti-RPL32 antibody (AA 1-135)

6 Images

Overview

Quantity:	100 µL
Target:	RPL32
Binding Specificity:	AA 1-135
Reactivity:	Human
Host:	Rabbit
Clonality:	Polyclonal
Conjugate:	This RPL32 antibody is un-conjugated
Application:	Western Blotting (WB), Immunofluorescence (IF), Immunohistochemistry (IHC)

Product Details

Immunogen:	Recombinant fusion protein containing a sequence corresponding to amino acids 1-135 of human RPL32 (NP_000985.1).
Sequence:	MAALRPLVKP KIVKKRTKKF IRHQSDRYVK IKRNWRKPRG IDNRVRRRFK GQILMPNIGY GSNKKTKHML PSGFRKFLVH NVKELEVLLM CNKSYCAEIA HNVSSKNRKA IVERAAQLAI RVTNPNARLR SEENE
Isotype:	IgG
Cross-Reactivity:	Human, Mouse, Rat
Characteristics:	Polyclonal Antibodies

Target Details

Target:	RPL32
---------	-------

Target Details

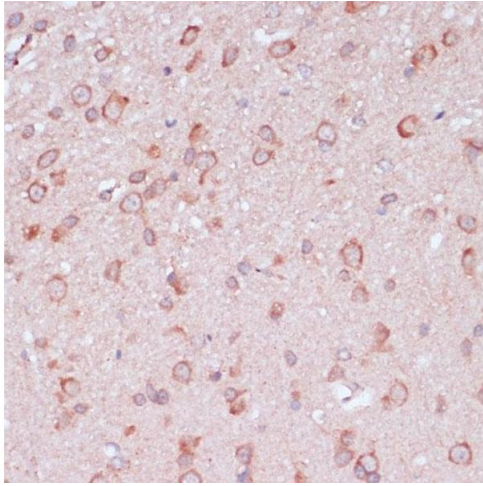
Alternative Name:	RPL32 (RPL32 Products)
Background:	Ribosomes, the organelles that catalyze protein synthesis, consist of a small 40S subunit and a large 60S subunit. Together these subunits are composed of 4 RNA species and approximately 80 structurally distinct proteins. This gene encodes a ribosomal protein that is a component of the 60S subunit. The protein belongs to the L32E family of ribosomal proteins. It is located in the cytoplasm. Although some studies have mapped this gene to 3q13.3-q21, it is believed to map to 3p25-p24. As is typical for genes encoding ribosomal proteins, there are multiple processed pseudogenes of this gene dispersed through the genome. Alternatively spliced transcript variants encoding the same protein have been observed for this gene.,RPL32,L32,PP9932,Epigenetics & Nuclear Signaling,RNA Binding,RPL32
Molecular Weight:	15 kDa
Gene ID:	6161
UniProt:	P62910

Application Details

Application Notes:	WB,1:500 - 1:2000,IHC,1:50 - 1:100,IF,1:50 - 1:100
Comment:	HIGH QUALITY
Restrictions:	For Research Use only

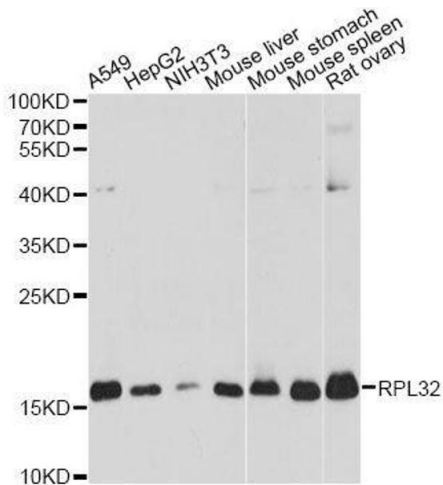
Handling

Format:	Liquid
Buffer:	PBS with 0.02 % sodium azide,50 % glycerol, pH 7.3.
Preservative:	Sodium azide
Precaution of Use:	This product contains Sodium azide: a POISONOUS AND HAZARDOUS SUBSTANCE which should be handled by trained staff only.
Storage:	-20 °C
Storage Comment:	Store at -20°C. Avoid freeze / thaw cycles.



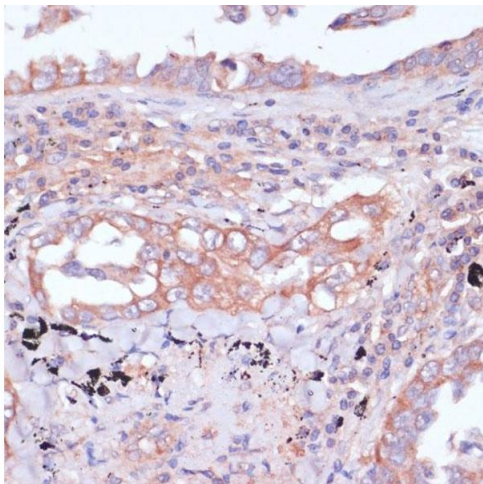
Immunohistochemistry

Image 1. Immunohistochemistry of paraffin-embedded rat brain using RPL32 antibody (ABIN6129104, ABIN6147138, ABIN6147139 and ABIN6216824) at dilution of 1:100 (40x lens). Perform microwave antigen retrieval with 10 mM PBS buffer pH 7.2 before commencing with IHC staining protocol.



Western Blotting

Image 2. Western blot analysis of extracts of various cell lines, using RPL32 antibody.



Immunohistochemistry

Image 3. Immunohistochemistry of paraffin-embedded human lung cancer using RPL32 antibody (ABIN6129104, ABIN6147138, ABIN6147139 and ABIN6216824) at dilution of 1:100 (40x lens). Perform microwave antigen retrieval with 10 mM PBS buffer pH 7.2 before commencing with IHC staining protocol.

Please check the [product details page](#) for more images. Overall 6 images are available for ABIN6147138.