



[Go to Product page](#)

Datasheet for ABIN6147145
anti-RPL4 antibody (AA 1-240)

3 Images

Overview

Quantity:	100 µL
Target:	RPL4
Binding Specificity:	AA 1-240
Reactivity:	Human
Host:	Rabbit
Clonality:	Polyclonal
Conjugate:	This RPL4 antibody is un-conjugated
Application:	Western Blotting (WB), Immunohistochemistry (IHC)

Product Details

Immunogen:	Recombinant fusion protein containing a sequence corresponding to amino acids 1-240 of human RPL4 (NP_000959.2).
Sequence:	MACARPLISV YSEKGESSGK NVTLPVAFKA PIRPDIVNFV HTNLRKNNRQ PYAVSELAGH Q TSAESWGTG RAVARIPRVR GGGTHRSGQG AFGNMCRGGR MFAPTKTWRR WHRRVNTTQK RYAICSALAA SALPALVMSK GHRIIEVPEL PLVVEDKVEG YKKTKEAVLL LKCLKAWNDI KKVYASQRMR AGKGKMRNRR RIQRRGPCII YNEDNGIIKA FRNIPGITLL NVSKLNILKL
Isotype:	IgG
Cross-Reactivity:	Human, Mouse, Rat
Characteristics:	Polyclonal Antibodies

Target Details

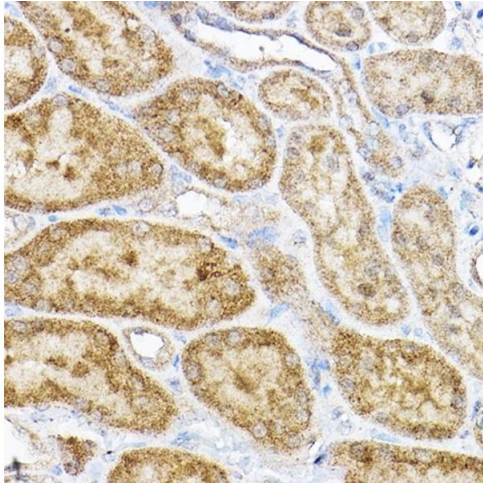
Target:	RPL4
Alternative Name:	RPL4 (RPL4 Products)
Background:	Ribosomes, the organelles that catalyze protein synthesis, consist of a small 40S subunit and a large 60S subunit. Together these subunits are composed of 4 RNA species and approximately 80 structurally distinct proteins. This gene encodes a ribosomal protein that is a component of the 60S subunit. The protein belongs to the L4E family of ribosomal proteins. It is located in the cytoplasm. As is typical for genes encoding ribosomal proteins, there are multiple processed pseudogenes of this gene dispersed through the genome.,RPL4,L4,Epigenetics & Nuclear Signaling,RNA Binding,RPL4
Molecular Weight:	47 kDa
Gene ID:	6124
UniProt:	P36578

Application Details

Application Notes:	WB,1:500 - 1:2000,IHC,1:50 - 1:200
Comment:	HIGH QUALITY
Restrictions:	For Research Use only

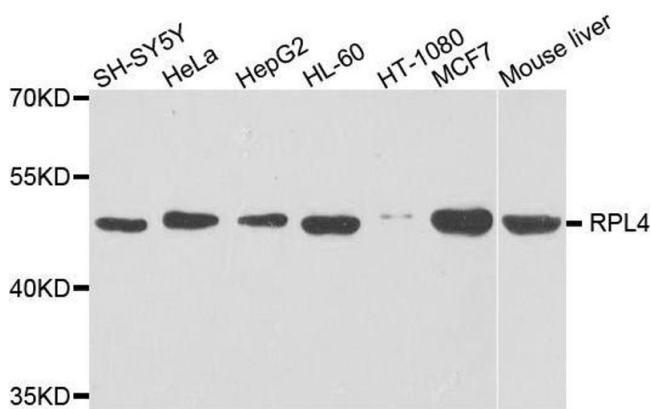
Handling

Format:	Liquid
Buffer:	PBS with 0.02 % sodium azide,50 % glycerol, pH 7.3.
Preservative:	Sodium azide
Precaution of Use:	This product contains Sodium azide: a POISONOUS AND HAZARDOUS SUBSTANCE which should be handled by trained staff only.
Storage:	-20 °C
Storage Comment:	Store at -20°C. Avoid freeze / thaw cycles.



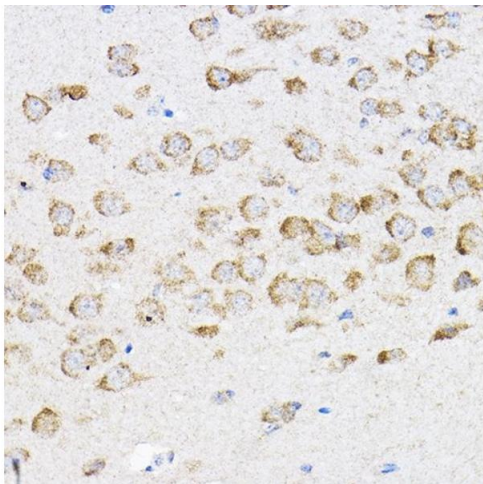
Immunohistochemistry

Image 1. Immunohistochemistry of paraffin-embedded rat kidney using RPL4 Rabbit pAb (ABIN6129106, ABIN6147145, ABIN6147146 and ABIN6221591) at dilution of 1:100 (40x lens). Perform high pressure antigen retrieval with 10 mM citrate buffer pH 6.0 before commencing with IHC staining protocol.



Western Blotting

Image 2. Western blot analysis of extracts of various cell lines, using RPL4 antibody.



Immunohistochemistry

Image 3. Immunohistochemistry of paraffin-embedded mouse brain using RPL4 Rabbit pAb (ABIN6129106, ABIN6147145, ABIN6147146 and ABIN6221591) at dilution of 1:100 (40x lens). Perform high pressure antigen retrieval with 10 mM citrate buffer pH 6.0 before commencing with IHC staining protocol.