

Datasheet for ABIN6147151
anti-RPL7A antibody (AA 1-266)



[Go to Product page](#)

4 Images

Overview

Quantity:	100 µL
Target:	RPL7A
Binding Specificity:	AA 1-266
Reactivity:	Human
Host:	Rabbit
Clonality:	Polyclonal
Conjugate:	This RPL7A antibody is un-conjugated
Application:	Western Blotting (WB), Immunofluorescence (IF)

Product Details

Immunogen:	Recombinant fusion protein containing a sequence corresponding to amino acids 1-266 of human RPL7A (NP_000963.1).
Sequence:	MPKGGKAKGK KVAPAPAVVK KQEAKKVVNP LFEKRPKNFG IGQDIQPKRD LTRFVKWPRY IRLQRQRAIL YKRLKVPPAI NQFTQALDRQ TATQLLKL AH KYRPETKQEK KQRL LARA EK KAAGKGDVPT KRPPVLRAGV NTVTTLVENK KAQLVVI AHD VDPIELVVFL PALCRKMGVP YCIIGK KARL GRLVHRKTCT TVAFTQVNSE DKGALAKLVE AIRTNYNDRY DEIRRHWGGN VLGPKSVARI AKLEKAKAKE LATKLG
Isotype:	IgG
Cross-Reactivity:	Human, Mouse, Rat
Characteristics:	Polyclonal Antibodies

Target Details

Target:	RPL7A
Alternative Name:	RPL7A (RPL7A Products)
Background:	<p>Cytoplasmic ribosomes, organelles that catalyze protein synthesis, consist of a small 40S subunit and a large 60S subunit. Together these subunits are composed of 4 RNA species and approximately 80 structurally distinct proteins. This gene encodes a ribosomal protein that is a component of the 60S subunit. The protein belongs to the L7AE family of ribosomal proteins. It can interact with a subclass of nuclear hormone receptors, including thyroid hormone receptor, and inhibit their ability to transactivate by preventing their binding to their DNA response elements. This gene is included in the surfeit gene cluster, a group of very tightly linked genes that do not share sequence similarity. It is co-transcribed with the U24, U36a, U36b, and U36c small nucleolar RNA genes, which are located in its second, fifth, fourth, and sixth introns, respectively. This gene rearranges with the trk proto-oncogene to form the chimeric oncogene trk-2h, which encodes an oncoprotein consisting of the N terminus of ribosomal protein L7a fused to the receptor tyrosine kinase domain of trk. As is typical for genes encoding ribosomal proteins, there are multiple processed pseudogenes of this gene dispersed through the genome.,RPL7A,L7A,SURF3,TRUP,Epigenetics & Nuclear Signaling,RNA Binding,RPL7A</p>
Molecular Weight:	29 kDa
Gene ID:	6130
UniProt:	P62424

Application Details

Application Notes:	WB,1:500 - 1:2000,IF,1:50 - 1:200
Restrictions:	For Research Use only

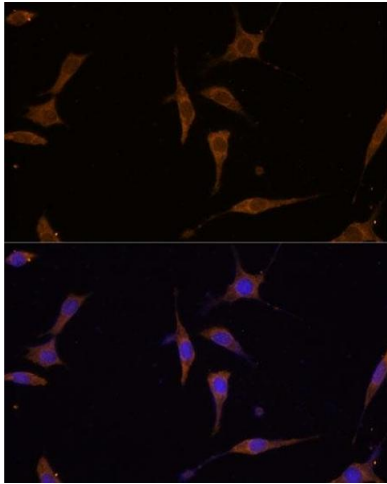
Handling

Format:	Liquid
Buffer:	PBS with 0.02 % sodium azide,50 % glycerol, pH 7.3.
Preservative:	Sodium azide
Precaution of Use:	This product contains Sodium azide: a POISONOUS AND HAZARDOUS SUBSTANCE which should be handled by trained staff only.
Storage:	-20 °C

Handling

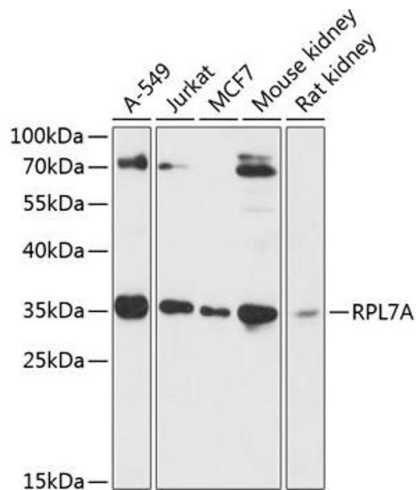
Storage Comment: Store at -20°C. Avoid freeze / thaw cycles.

Images



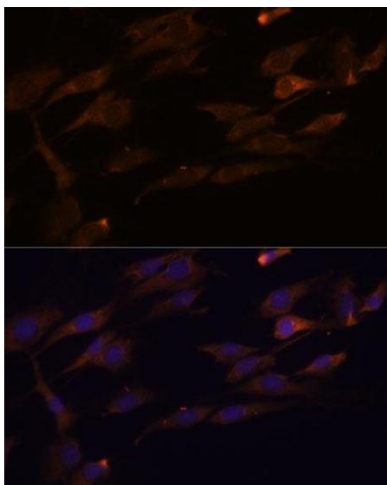
Immunofluorescence

Image 1. Immunofluorescence analysis of L929 cells using RPL7A antibody (ABIN6128658, ABIN6147151, ABIN6147153 and ABIN6218286) at dilution of 1:100. Blue: DAPI for nuclear staining.



Western Blotting

Image 2. Western blot analysis of extracts of various cell lines, using RPL7A antibody (ABIN6128658, ABIN6147151, ABIN6147153 and ABIN6218286) at 1:3000 dilution. Secondary antibody: HRP Goat Anti-Rabbit IgG (H+L) (ABIN1684268 and ABIN3020597) at 1:10000 dilution. Lysates/proteins: 25 µg per lane. Blocking buffer: 3 % nonfat dry milk in TBST. Detection: ECL Basic Kit (RM00020). Exposure time: 60s.



Immunofluorescence

Image 3. Immunofluorescence analysis of C6 cells using RPL7A antibody (ABIN6128658, ABIN6147151, ABIN6147153 and ABIN6218286) at dilution of 1:100. Blue: DAPI for nuclear staining.

Please check the [product details page](#) for more images. Overall 4 images are available for ABIN6147151.