

Datasheet for ABIN6147163
anti-RPLP0 antibody (AA 1-317)

2 Images

[Go to Product page](#)

Overview

Quantity:	100 µL
Target:	RPLP0
Binding Specificity:	AA 1-317
Reactivity:	Human
Host:	Rabbit
Clonality:	Polyclonal
Conjugate:	This RPLP0 antibody is un-conjugated
Application:	Western Blotting (WB), Immunofluorescence (IF)

Product Details

Immunogen:	Recombinant fusion protein containing a sequence corresponding to amino acids 1-317 of human RPLP0 (NP_000993.1).
Sequence:	MPREDRATWK SNYFLKIIQL LDDYPKCFIV GADNVGSKQM QQIRMSLRGK AVVLMGKNTM MRKAIRGHLE NNPALKLLP HIRGNVGFVF TKEDLTEIRD MLLANKVPAA ARAGAIAPCE VTVPAQNTGL GPEKTSFFQA LGITTKISRG TIEILSDVQL IKTGDKVGAS EATLLNMLNI SPFSFGLVIQ QVFDNGSIYN PEVLDITEET LHSRFLEGVR NVASVCLQIG YPTVASVPHS IINGYKRVLA LSVETDYTFP LAEKVKAFLA DPSAFVAAAP VAAATTAAPA AAAAPAKVEA KEESEESDED MGFGFLFD
Isotype:	IgG
Cross-Reactivity:	Human, Mouse
Characteristics:	Polyclonal Antibodies

Target Details

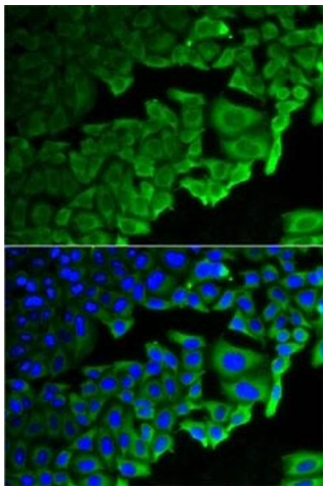
Target:	RPLP0
Alternative Name:	RPLP0 (RPLP0 Products)
Background:	<p>Ribosomes, the organelles that catalyze protein synthesis, consist of a small 40S subunit and a large 60S subunit. Together these subunits are composed of 4 RNA species and approximately 80 structurally distinct proteins. This gene encodes a ribosomal protein that is a component of the 60S subunit. The protein, which is the functional equivalent of the E. coli L10 ribosomal protein, belongs to the L10P family of ribosomal proteins. It is a neutral phosphoprotein with a C-terminal end that is nearly identical to the C-terminal ends of the acidic ribosomal phosphoproteins P1 and P2. The P0 protein can interact with P1 and P2 to form a pentameric complex consisting of P1 and P2 dimers, and a P0 monomer. The protein is located in the cytoplasm. Transcript variants derived from alternative splicing exist, they encode the same protein. As is typical for genes encoding ribosomal proteins, there are multiple processed pseudogenes of this gene dispersed through the genome.,RPLP0,L10E,LP0,P0,PRLP0,RPP0,Epigenetics & Nuclear Signaling,RNA Binding,RPLP0</p>
Molecular Weight:	27 kDa/34 kDa
Gene ID:	6175
UniProt:	P05388

Application Details

Application Notes:	WB,1:500 - 1:2000,IF,1:50 - 1:200
Comment:	HIGH QUALITY
Restrictions:	For Research Use only

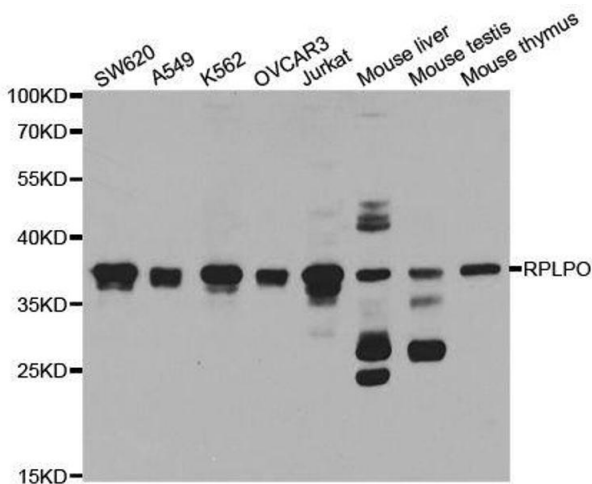
Handling

Format:	Liquid
Buffer:	PBS with 0.02 % sodium azide,50 % glycerol, pH 7.3.
Preservative:	Sodium azide
Precaution of Use:	This product contains Sodium azide: a POISONOUS AND HAZARDOUS SUBSTANCE which should be handled by trained staff only.
Storage:	-20 °C
Storage Comment:	Store at -20°C. Avoid freeze / thaw cycles.



Immunofluorescence

Image 1. Immunofluorescence analysis of HeLa cells using RPLP0 antibody (ABIN6128686, ABIN6147163, ABIN6147165 and ABIN6221205). Blue: DAPI for nuclear staining.



Western Blotting

Image 2. Western blot analysis of extracts of various cell lines, using RPLP0 antibody.