



[Go to Product page](#)

Datasheet for ABIN6147176
anti-RPP25 antibody (AA 1-199)

3 Images

Overview

Quantity:	100 µL
Target:	RPP25
Binding Specificity:	AA 1-199
Reactivity:	Human
Host:	Rabbit
Clonality:	Polyclonal
Conjugate:	This RPP25 antibody is un-conjugated
Application:	Western Blotting (WB), Immunohistochemistry (IHC)

Product Details

Immunogen:	Recombinant fusion protein containing a sequence corresponding to amino acids 1-199 of human RPP25 (NP_060263.2).
Sequence:	MENFRKVRSE EAPAGCGAEG GPGSGPFAD LAPGAVHMRV KEGSKIRNLM AFATASMAQP ATRAIVFSGC GRATTKTVTC AEILKRRLAG LHQVTRLRYR SVREVVQSLP PGPTQGQTPG EPAASLSVLK NVPGLAILLS KDALDPRQPG YQPPNPHPGP SSPPAAPASK RSLGEPAAAGE GSAKRSQPEP GVADEDQTA
Isotype:	IgG
Cross-Reactivity:	Human, Mouse
Characteristics:	Polyclonal Antibodies

Target Details

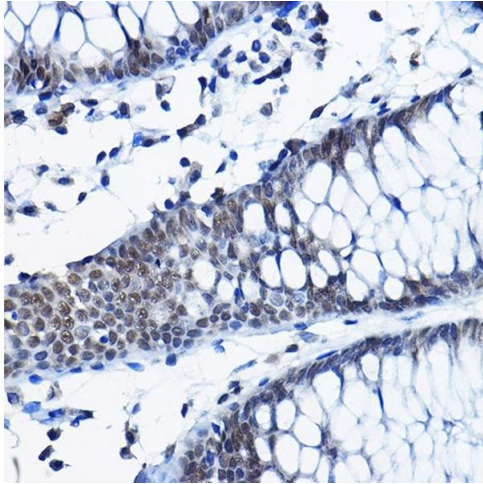
Target:	RPP25
Alternative Name:	RPP25 (RPP25 Products)
Background:	Component of ribonuclease P, a ribonucleoprotein complex that generates mature tRNA molecules by cleaving their 5'-ends. Also a component of the MRP ribonuclease complex, which cleaves pre-rRNA sequences.,RPP25,Epigenetics & Nuclear Signaling,RNA Binding,Endocrine & Metabolism,Mitochondrial metabolism,RPP25
Molecular Weight:	20 kDa
Gene ID:	54913
UniProt:	Q9BUL9

Application Details

Application Notes:	WB,1:500 - 1:2000,IHC,1:50 - 1:200
Comment:	HIGH QUALITY
Restrictions:	For Research Use only

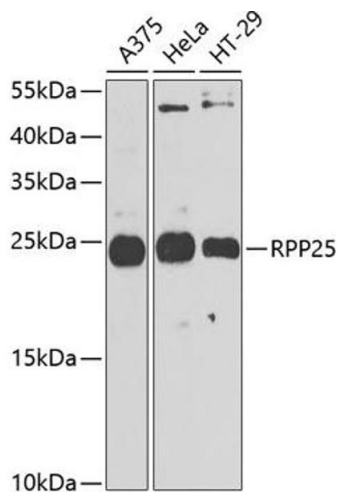
Handling

Format:	Liquid
Buffer:	PBS with 0.02 % sodium azide,50 % glycerol, pH 7.3.
Preservative:	Sodium azide
Precaution of Use:	This product contains Sodium azide: a POISONOUS AND HAZARDOUS SUBSTANCE which should be handled by trained staff only.
Storage:	-20 °C
Storage Comment:	Store at -20°C. Avoid freeze / thaw cycles.



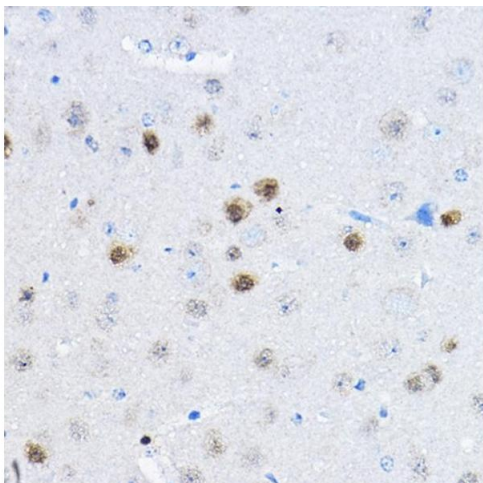
Immunohistochemistry

Image 1. Immunohistochemistry of paraffin-embedded human colon using RPP25 Rabbit pAb (ABIN6133248, ABIN6147176, ABIN6147177 and ABIN6225317) at dilution of 1:100 (40x lens). Perform high pressure antigen retrieval with 10 mM citrate buffer pH 6.0 before commencing with IHC staining protocol.



Western Blotting

Image 2. Western blot analysis of extracts of various cell lines, using RPP25 antibody (ABIN6133248, ABIN6147176, ABIN6147177 and ABIN6225317) at 1:1000 dilution. Secondary antibody: HRP Goat Anti-Rabbit IgG (H+L) (ABIN1684268 and ABIN3020597) at 1:10000 dilution. Lysates/proteins: 25 µg per lane. Blocking buffer: 3 % nonfat dry milk in TBST. Detection: ECL Enhanced Kit (RM00021). Exposure time: 90s.



Immunohistochemistry

Image 3. Immunohistochemistry of paraffin-embedded mouse brain using RPP25 Rabbit pAb (ABIN6133248, ABIN6147176, ABIN6147177 and ABIN6225317) at dilution of 1:100 (40x lens). Perform high pressure antigen retrieval with 10 mM citrate buffer pH 6.0 before commencing with IHC staining protocol.