

Datasheet for ABIN6147191
anti-RPS10 antibody (AA 1-165)

5 Images

[Go to Product page](#)

Overview

Quantity:	100 µL
Target:	RPS10
Binding Specificity:	AA 1-165
Reactivity:	Human
Host:	Rabbit
Clonality:	Polyclonal
Conjugate:	This RPS10 antibody is un-conjugated
Application:	Western Blotting (WB), Immunohistochemistry (IHC), Immunofluorescence (IF), Immunoprecipitation (IP)

Product Details

Immunogen:	Recombinant fusion protein containing a sequence corresponding to amino acids 1-165 of human RPS10 (NP_001190174.1).
Sequence:	MLMPKKNRIA IYELLFKEGV MVAKKDVHMP KHP ELADKNV PNLHVMKAMQ SLKSRGYVKE QFAWRHFWY LTNEGIQYLR DY LHL PPEIV PATLRRSRPE TGRPRPKGLE GERPARLTRG EADRD TYRRS AVPPGADKKA EAGAGSATEF QFRGGFGRGR GQPPQ
Isotype:	IgG
Cross-Reactivity:	Human, Mouse, Rat
Characteristics:	Polyclonal Antibodies

Target Details

Target:	RPS10
Alternative Name:	RPS10 (RPS10 Products)
Background:	<p>Ribosomes, the organelles that catalyze protein synthesis, consist of a small 40S subunit and a large 60S subunit. Together these subunits are composed of 4 RNA species and approximately 80 structurally distinct proteins. This gene encodes a ribosomal protein that is a component of the 40S subunit. The protein belongs to the S10E family of ribosomal proteins. It is located in the cytoplasm. Variable expression of this gene in colorectal cancers compared to adjacent normal tissues has been observed, although no correlation between the level of expression and the severity of the disease has been found. As is typical for genes encoding ribosomal proteins, there are multiple processed pseudogenes of this gene dispersed through the genome.</p> <p>Alternate splicing results in multiple transcript variants that encode the same protein. Naturally occurring read-through transcription occurs between this locus and the neighboring locus NUDT3 (nudix (nucleoside diphosphate linked moiety X)-type motif 3),RPS10,DBA9,S10,RPS10,Epigenetics & Nuclear Signaling,RNA Binding,RPS10</p>
Molecular Weight:	18 kDa
Gene ID:	6204
UniProt:	P46783
Pathways:	Ribonucleoprotein Complex Subunit Organization , Ribosome Assembly

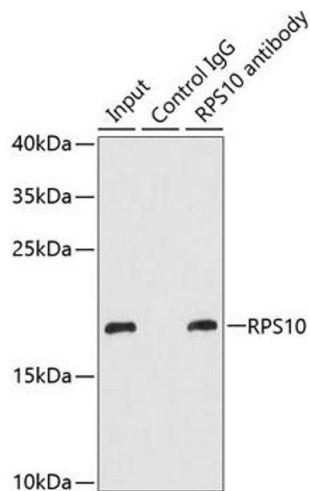
Application Details

Application Notes:	WB,1:500 - 1:2000,IHC,1:50 - 1:200,IF,1:20 - 1:50,IP,1:20 - 1:50
Comment:	HIGH QUALITY
Restrictions:	For Research Use only

Handling

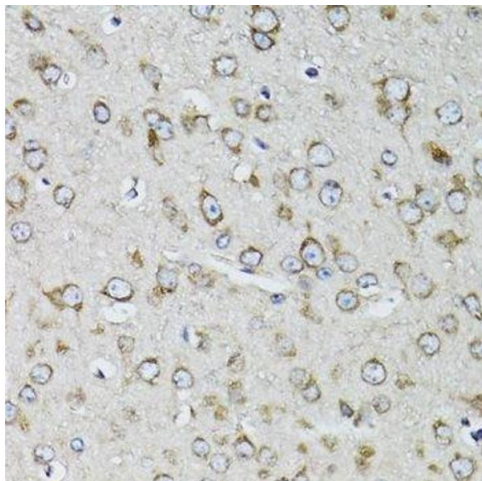
Format:	Liquid
Buffer:	PBS with 0.02 % sodium azide,50 % glycerol, pH 7.3.
Preservative:	Sodium azide
Precaution of Use:	This product contains Sodium azide: a POISONOUS AND HAZARDOUS SUBSTANCE which should be handled by trained staff only.
Storage:	-20 °C

Storage Comment: Store at -20°C. Avoid freeze / thaw cycles.



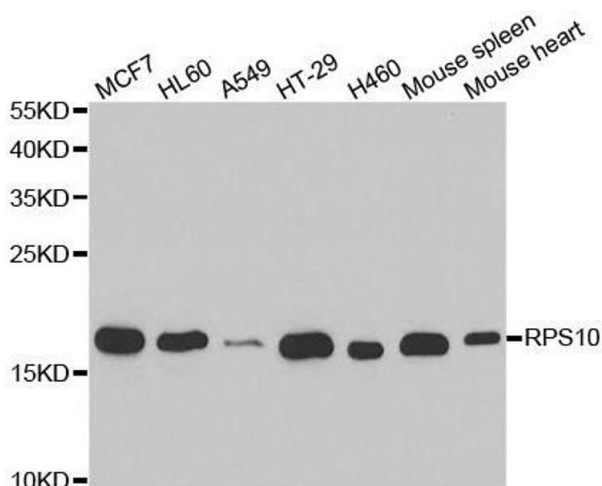
Immunoprecipitation

Image 1. Immunoprecipitation analysis of 200 µg extracts of MCF-7 cells using 1 µg RPS10 antibody (ABIN6132944, ABIN6147191, ABIN6147193 and ABIN6221584). Western blot was performed from the immunoprecipitate using RPS10 antibody (ABIN6132944, ABIN6147191, ABIN6147193 and ABIN6221584) at a dilution of 1:1000.



Immunohistochemistry (Paraffin-embedded Sections)

Image 2. Immunohistochemistry of paraffin-embedded mouse brain using RPS10 antibody.



Western Blotting

Image 3. Western blot analysis of extracts of various cell lines, using RPS10 antibody.

Please check the [product details page](#) for more images. Overall 5 images are available for ABIN6147191.