

Datasheet for ABIN6147195
anti-RPS12 antibody (AA 1-132)

5 Images

[Go to Product page](#)

Overview

| | |
|----------------------|--|
| Quantity: | 100 µL |
| Target: | RPS12 |
| Binding Specificity: | AA 1-132 |
| Reactivity: | Human |
| Host: | Rabbit |
| Clonality: | Polyclonal |
| Conjugate: | This RPS12 antibody is un-conjugated |
| Application: | Western Blotting (WB), Immunofluorescence (IF) |

Product Details

| | |
|-------------------|--|
| Immunogen: | Recombinant fusion protein containing a sequence corresponding to amino acids 1-132 of human RPS12 (NP_001007.2). |
| Sequence: | MAEEGIAAGG VMDVNTALQE VLKTALIHG LARGIREAAK ALDKRQAHLC VLASNCDEPM YVKLVEALCA EHQINLIKVD DNKKLGWVG LCKIDREGKP RKVVGCSQV VKDYGKESQA KDVIEEYFKC KK |
| Isotype: | IgG |
| Cross-Reactivity: | Human, Mouse, Rat |
| Characteristics: | Polyclonal Antibodies |

Target Details

| | |
|---------|-------|
| Target: | RPS12 |
|---------|-------|

Target Details

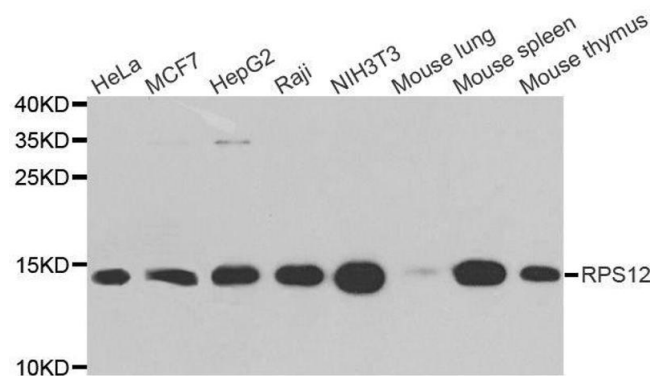
| | |
|-------------------|---|
| Alternative Name: | RPS12 (RPS12 Products) |
| Background: | Ribosomes, the organelles that catalyze protein synthesis, consist of a small 40S subunit and a large 60S subunit. Together these subunits are composed of 4 RNA species and approximately 80 structurally distinct proteins. This gene encodes a ribosomal protein that is a component of the 40S subunit. The protein belongs to the S12E family of ribosomal proteins. It is located in the cytoplasm. Increased expression of this gene in colorectal cancers compared to matched normal colonic mucosa has been observed. As is typical for genes encoding ribosomal proteins, there are multiple processed pseudogenes of this gene dispersed through the genome.,RPS12,S12,Epigenetics & Nuclear Signaling,RNA Binding,RPS12 |
| Molecular Weight: | 14 kDa |
| Gene ID: | 6206 |
| UniProt: | P25398 |

Application Details

| | |
|--------------------|-----------------------------------|
| Application Notes: | WB,1:500 - 1:2000,IF,1:10 - 1:100 |
| Comment: | HIGH QUALITY |
| Restrictions: | For Research Use only |

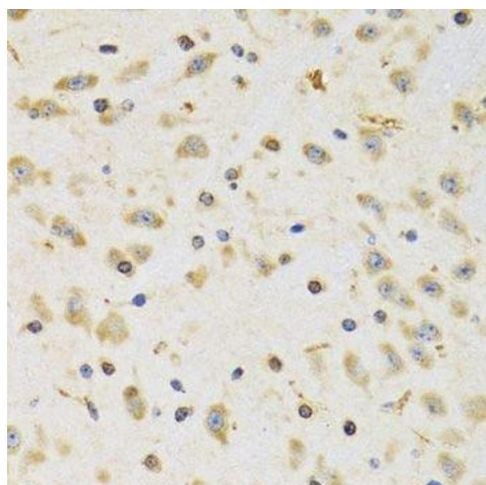
Handling

| | |
|--------------------|--|
| Format: | Liquid |
| Buffer: | PBS with 0.02 % sodium azide,50 % glycerol, pH 7.3. |
| Preservative: | Sodium azide |
| Precaution of Use: | This product contains Sodium azide: a POISONOUS AND HAZARDOUS SUBSTANCE which should be handled by trained staff only. |
| Storage: | -20 °C |
| Storage Comment: | Store at -20°C. Avoid freeze / thaw cycles. |



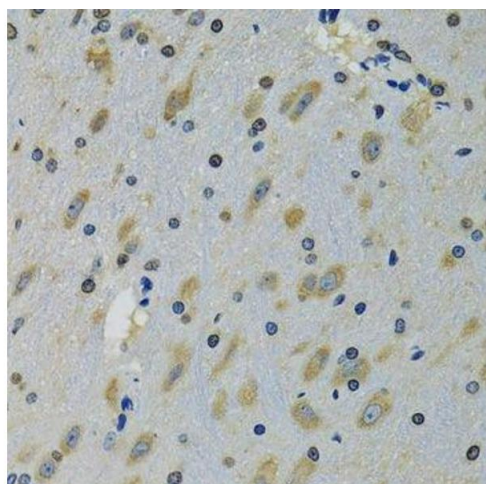
Western Blotting

Image 1. Western blot analysis of extracts of various cell lines, using RPS12 antibody.



Immunohistochemistry (Paraffin-embedded Sections)

Image 2. Immunohistochemistry of paraffin-embedded rat brain using RPS12 antibody.



Immunohistochemistry (Paraffin-embedded Sections)

Image 3. Immunohistochemistry of paraffin-embedded mouse brain using RPS12 antibody.

Please check the [product details page](#) for more images. Overall 5 images are available for ABIN6147195.